



# *Harvest Point*

*930 Harvest Drive, Blue Bell, Pennsylvania 19422*

# 930 HARVEST DRIVE

**+/- 2,000 - 17,996 RSF  
AVAILABLE FOR LEASE**

First Floor Available: +/- 4,024 RSF  
Second Floor Available: +/- 11,200 RSF (Divisible)  
Fourth Floor Available: +/- 2,772 RSF

## Building Amenities

- ▶ Four-Story Class A office building totaling 118,004 SF
- ▶ Renovated restrooms, common areas, and lobby directory
- ▶ Tenant lounge area available 24/7
- ▶ Tenant only conference center
- ▶ Full time on-site day porter, building engineer and on-site management & ownership
- ▶ Three separate business class fiber providers (Comcast, Verizon, and CenturyLink)
- ▶ Back up generator
- ▶ Plug and play suites available - seamless no hassle tenant build-out process
- ▶ Parking ratio of 4/1000 sf with additional parking available on the adjacent lot
- ▶ Easy access from major highways I-476, PA Turnpike and Plymouth Meeting Interchange

## Area Amenities

Conveniently located, 930 Harvest Drive is within close proximity of hotels, health clubs, over 50 plus restaurants, banks and retail.



The foregoing information was furnished to us by sources which we deem to be reliable, but no warranty or representation is made as to the accuracy thereof. Subject to correction of errors, omissions, change of price, prior sale or withdrawal from market without notice.

**www.WolfCRE.com**



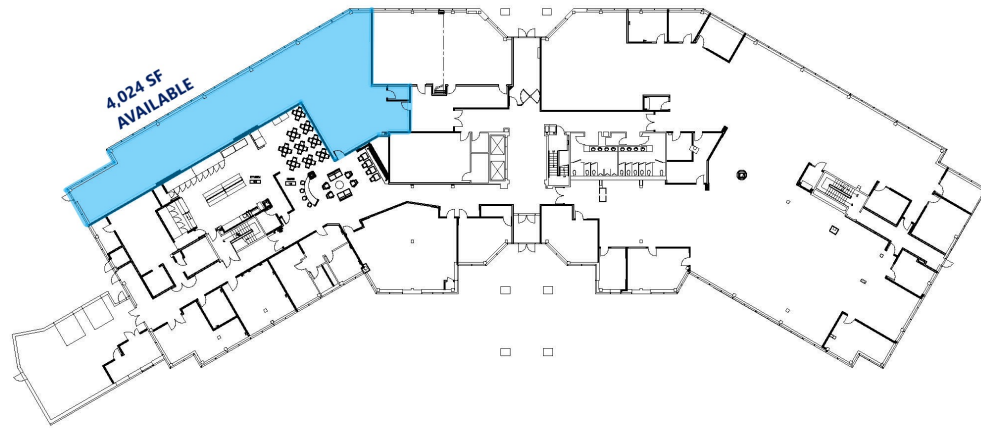
# BLUE BELL | PENNSYLVANIA

## *On-Site Cafe*

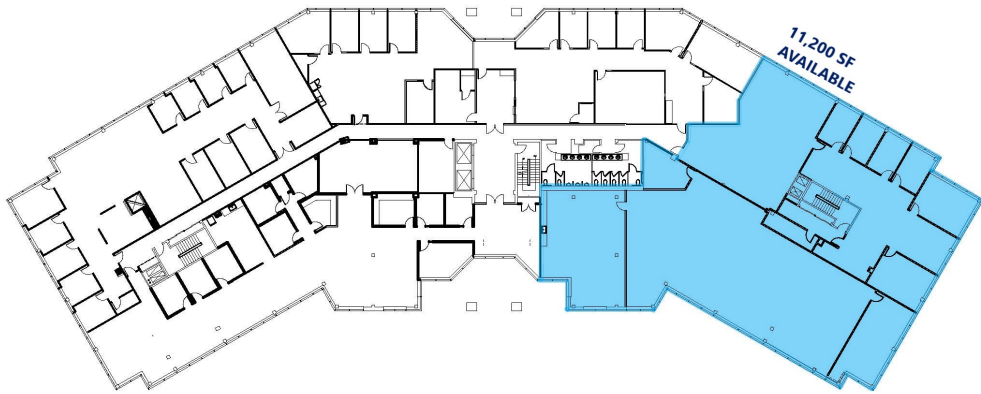


# SPACE AVAILABLE

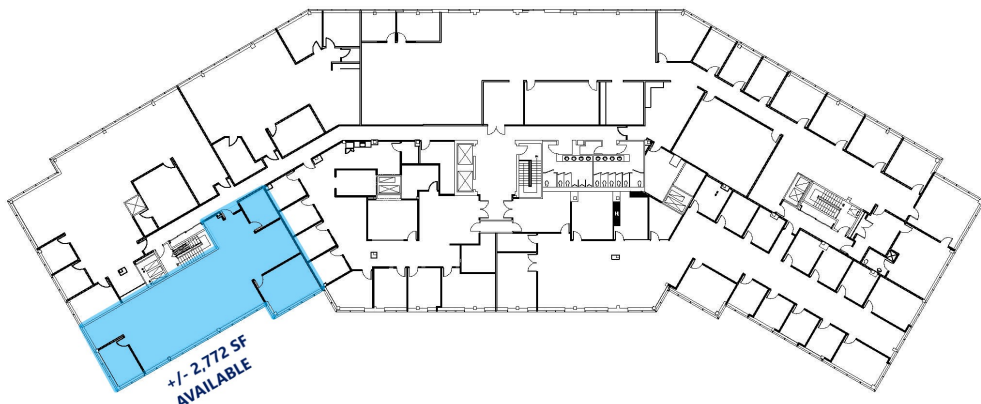
## First Floor



## Second Floor



## Fourth Floor



The foregoing information was furnished to us by sources which we deem to be reliable, but no warranty or representation is made as to the accuracy thereof. Subject to correction of errors, omissions, change of price, prior sale or withdrawal from market without notice.

# TENANT SATISFACTION



## *TENANT SATISFACTION IS OUR #1 PRIORITY*

- Responsive, on-site ownership and management
- Seamless no hassle tenant build-out process
- Renovated building cafe in addition to a 24/7 vending area
- Wifi available throughout the building
- Renovated common areas, lobby directory and restrooms
- On-site day porter to immediately address Tenant maintenance requests
- Beautiful Class A building in a park-like setting with abundant parking and exceptional glass lines





# AREA AMENITIES WITHIN 3 MILE RADIUS

## HOTELS AND CORPORATE HOUSING

Courtyard by Marriott  
Extended Stay America  
Hilton Doubletree Guest Suites  
Hyatt Summerfield Suites  
Korman Communities  
Marriott Spring Hill Suites

## CHILD CARE FACILITIES

Chesterbrook Academy  
Flanagan's Pre-School  
Goddard School  
KinderCare

## HEALTH CLUBS

Ambler Area YMCA  
LA Fitness  
Plymouth Meeting Community Center  
Retro Fitness

## RESTAURANTS

Anthony's Coal Fired Pizza  
Benihana  
Blue Bell Inn  
Blue Fin  
Broad Axe Tavern  
California Pizza Kitchen  
Capone's Restaurant  
Carmine's Italian Grille  
Chick Fil-A  
Chipotle Mexican Grill  
Dave and Buster's  
Dunkin Donuts  
El Sarape Mexican Restaurant  
Golden Sea  
Jersey Mike's  
Harry's Tap Room  
Houlihan's  
Izzy's Deli  
Lai Lai Garden  
L'Angolo Blue  
Lee's Hoagie House  
Manhattan Bagel  
McDonald's  
Mirna's Café  
Nectar  
Olympia Pizzeria & Restaurant  
P.F. Chang China Bistro  
Palermo Pizza  
Panache  
Phil's Tavern  
Plaza Azteca  
PJ Whelihans Pub  
Radice  
Redstone American Grill  
Reed's Blue Bell  
Ristorante Castello  
Starbuck's  
Subway  
Thai Orchid  
Turning Point  
Wawa  
Whole Foods Market & Cafe  
Zoe's Kitchen  
Zoop

## GOLF COURSES AND COUNTRY CLUBS

Blue Bell Country Club  
Cedarbrook Country Club  
Meadowlands Country Club  
Mermaid Lake  
Plymouth Country Club

## TRANSPORTATION

Dave's Best Limousine  
King Limousine Service  
Main Line Taxi and Limousine Maxwell Taxi  
Philadelphia International Airport  
SEPTA - Route 98  
Wings Field (Private Airport)

## PUBLIC LIBRARY

Wissahickon Valley Public Library - Blue Bell  
Wissahickon Valley Public Library - Ambler

## POST OFFICES

US Post Office - Blue Bell  
US Post Office - Ambler

## BANKS

Bank of America  
Citizen's Bank  
Conestoga Bank  
First Niagara  
PNC Bank  
Sovereign Bank  
StoneBridge Bank  
TD Bank  
Vist Bank  
Wells Fargo Bank

## GAS STATIONS

Sunoco  
Lukoil

## OTHERS

Fed Ex Kinko's  
Grace Cleaners  
Penn Bell Cleaners  
Whitpain Cleaners  
Whitpain Township Building

# PROPERTY LOCATION



## Contact Us

Todd Monahan  
Executive Vice President, Managing Director  
D 215 799 6145 M 610 213 1648  
[todd.monahan@wolfcre.com](mailto:todd.monahan@wolfcre.com)

Jason M. Wolf  
Managing Principal  
D 215 799 6900 M 215 588 8800  
[jason.wolf@wolfcre.com](mailto:jason.wolf@wolfcre.com)

follow us:





NEW JERSEY OFFICE  
One Holtec Drive | Suite G100  
Marlton, NJ 08053  
P 856 857-6300 | F 856 283-3950

PHILADELPHIA OFFICE  
1717 Arch Street, Suite 3950  
Philadelphia, PA 19103  
P 215 799 6900 | F 856 283 3950

KING OF PRUSSIA OFFICE  
630 Freedom Business Center | 3rd Floor  
King of Prussia, PA 19406  
P 215 799 6900 | F 610 768 7701

[www.WolfCRE.com](http://www.WolfCRE.com)