

PROMINENT OFFICE SUITES FOR LEASE

IDEAL FOR
PROFESSIONAL
OR MEDICAL
OFFICE USERS



**1949 ROUTE 70
CHERRY HILL, NJ**

Brian Goren
Senior Advisor
215.799.6143
brian.goren@wolfcre.com



The foregoing information was furnished to us by sources which we deem to be reliable, but no warranty or representation is made as to the accuracy thereof. Subject to correction of errors, omissions, change of price, prior sale or withdrawal from market without notice.



Wolf Commercial Real Estate
www.WolfCRE.com



PROPERTY DESCRIPTION

Location: 1949 Route 70
Cherry Hill, NJ 08003

Size/SF: Suite 9: 915 SF
Suite 7: +/-1,300 SF

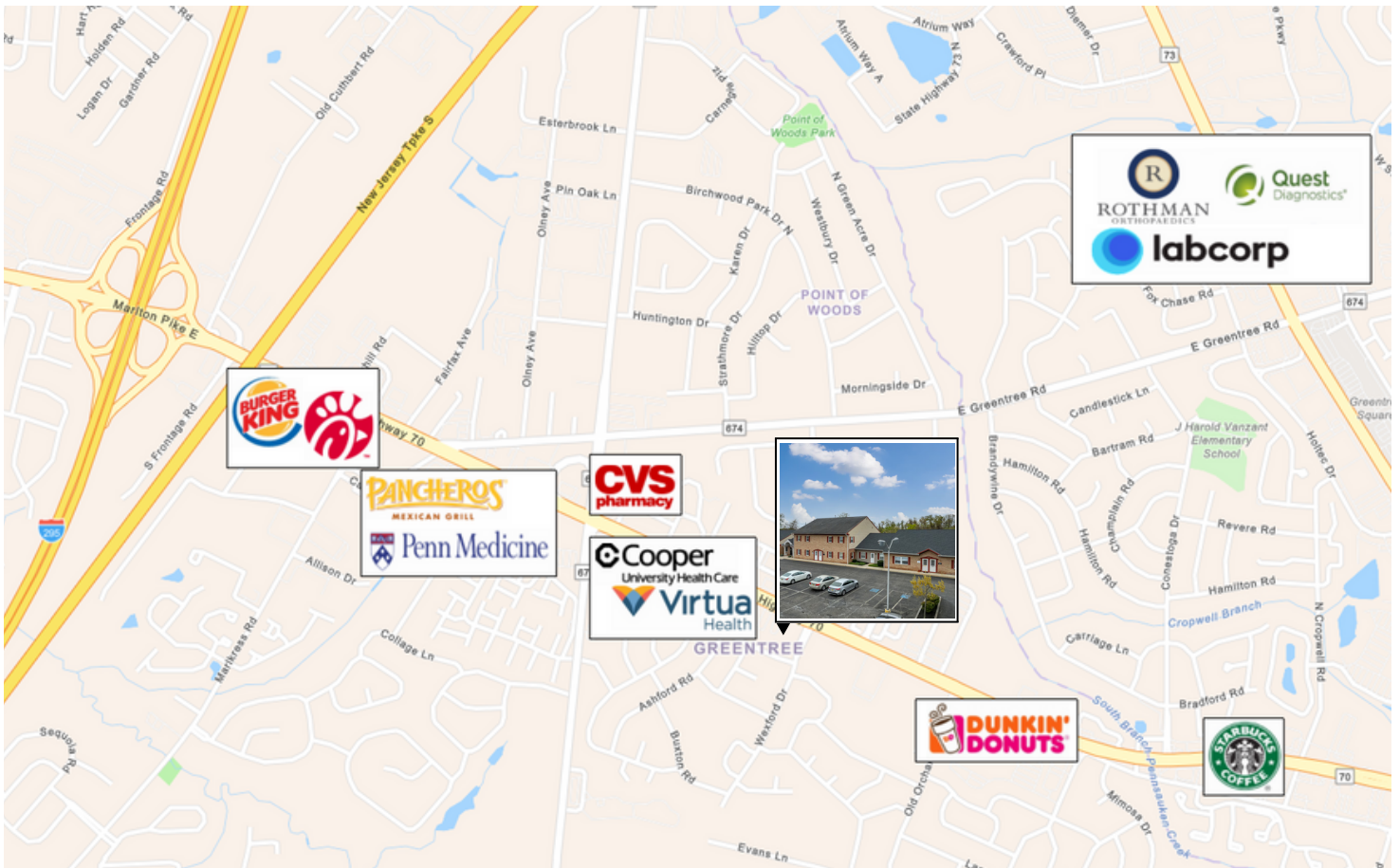
Lease Price: Call for information

Occupancy: Suite 9: Immediate
Suite 7: Available 9/1/24

PROPERTY AREA/HIGHLIGHTS

- Ideal for professional office, medical or dental office user
- Suite signage available
- On-site ownership and management
- Join Advocare Pediatrics
- Located in Cherry Hill's Central Business District
- Immediate access to I-295
- Close proximity to local health systems, restaurants and shopping

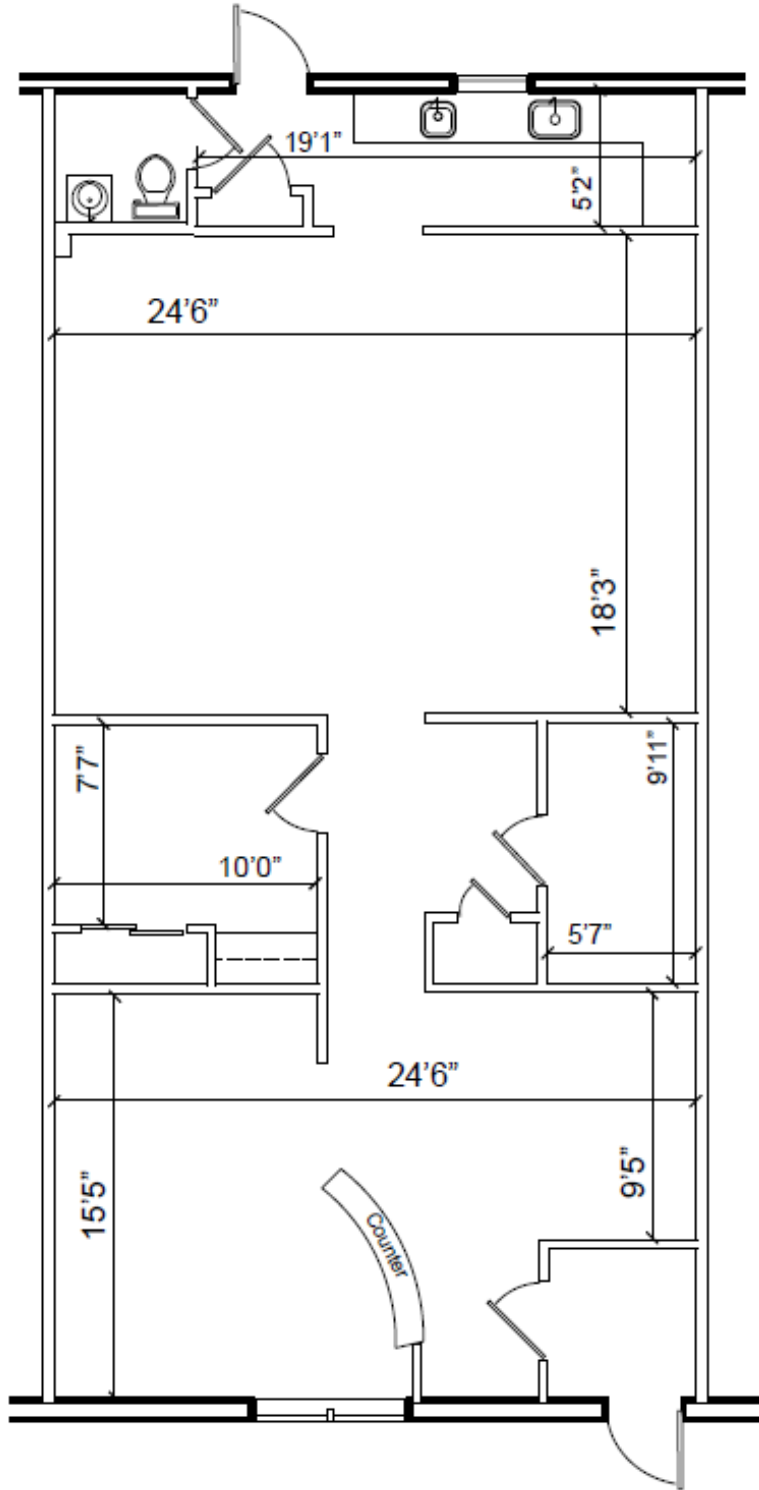
AERIAL MAP



The foregoing information was furnished to us by sources which we deem to be reliable, but no warranty or representation is made as to the accuracy thereof. Subject to correction of errors, omissions, change of price, prior sale or withdrawal from market without notice.

FLOOR PLAN

SUITE 7



The foregoing information was furnished to us by sources which we deem to be reliable, but no warranty or representation is made as to the accuracy thereof. Subject to correction of errors, omissions, change of price, prior sale or withdrawal from market without notice.