



326 ROUTE 73 | VOORHEES, NJ



## PROPERTY DESCRIPTION

- Location** 326 Route 73  
Voorhees, NJ 08043
- Size / SF Available** 6,862 SF
- Sale Price** \$2,000,000
- Signage** Monument signage fronting on the heavily traveled route 73
- Property / Area Description**
- Recently renovated
  - Situated on +/-2.56 acres with 10,000sf approved pad site for future development
  - Ideal for a variety of medical and professional office uses.
  - **Recreational marijuana businesses welcome! - Voorhees approved.**
  - Immediate access to Virtua Hospital Voorhees Campus
  - Surrounded by healthcare & professional users. Within close proximity to many retail stores, restaurants and health care practices
  - Convenient access to Route 70, I-295, New Jersey Turnpike and the Atlantic City Expressway

## Contact Us

Jason Wolf  
Managing Principal  
215.588.8800  
jason.wolf@wolfcre.com

John Mozzillo  
Executive Vice President  
856.816.6973  
john.mozzillo@wolfcre.com



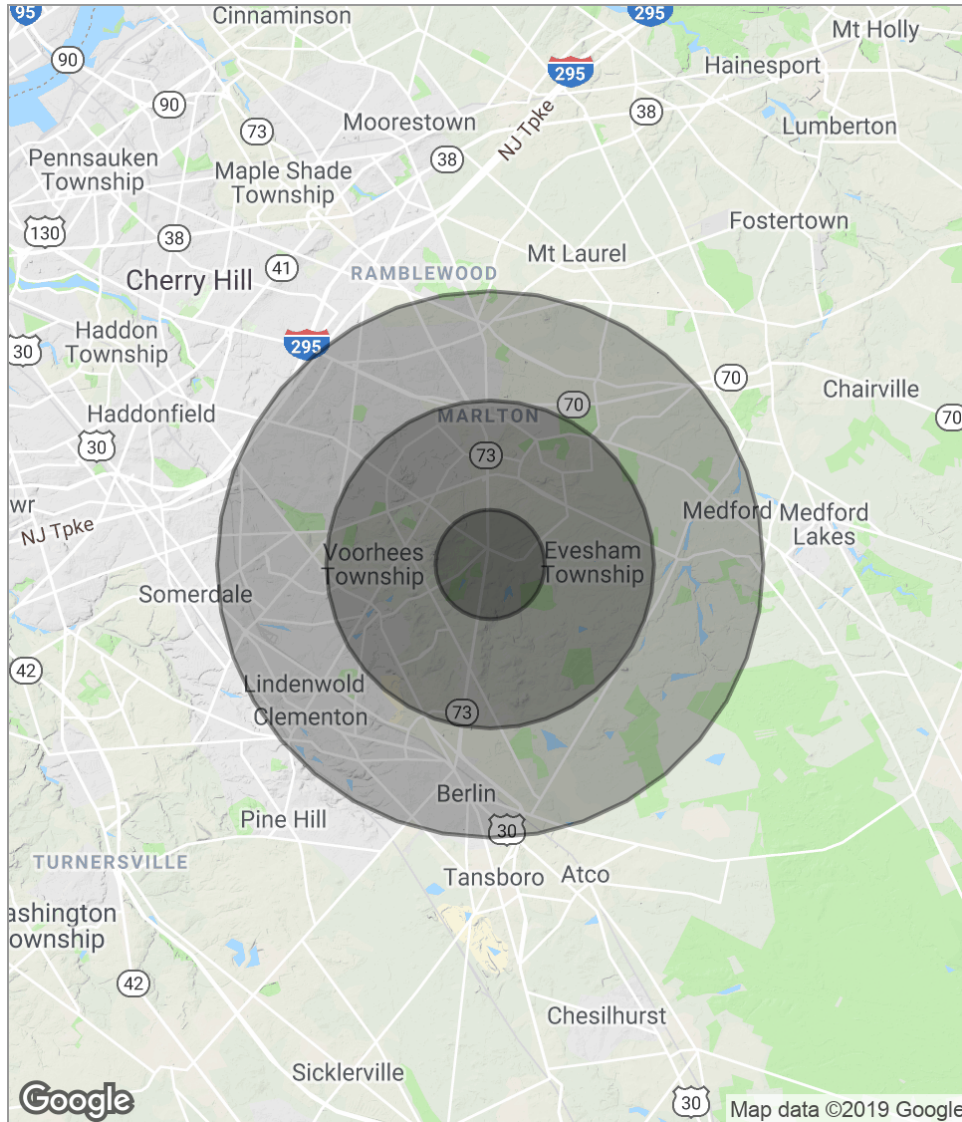
Map data ©2019 Google Imagery ©2019 , DigitalGlobe, Landsat / Copernicus, U.S. Geological Survey, USDA Farm Service Agency

follow us:    

The foregoing information was furnished to us by sources which we deem to be reliable, but no warranty or representation is made as to the accuracy thereof. Subject to correction of errors, omissions, change of price, prior sale or withdrawal from market without notice.



## DEMOGRAPHICS MAP



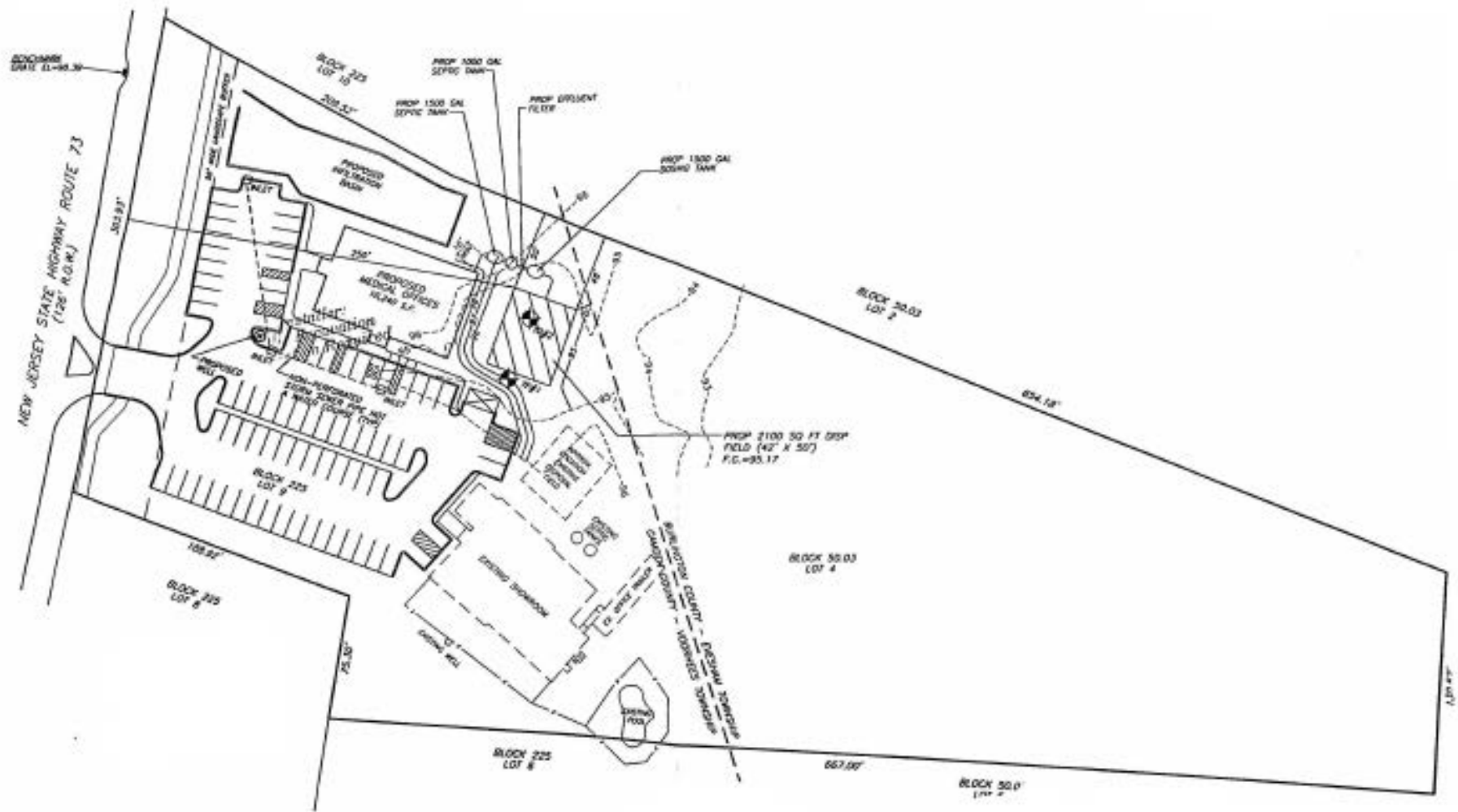
POPULATION	1 MILE	3 MILES	5 MILES
Total population	5,319	52,284	148,893
Median age	42.1	41.8	40.7
Median age (male)	40.5	40.4	39.4
Median age (Female)	43.0	43.0	41.8
HOUSEHOLDS & INCOME	1 MILE	3 MILES	5 MILES
Total households	1,769	18,548	54,869
# of persons per HH	3.0	2.8	2.7
Average HH income	\$140,234	\$119,945	\$108,705
Average house value	\$443,669	\$388,929	\$369,187

*\* Demographic data derived from 2010 US Census*



The foregoing information was furnished to us by sources which we deem to be reliable, but no warranty or representation is made as to the accuracy thereof. Subject to correction of errors, omissions, change of price, prior sale or withdrawal from market without notice.

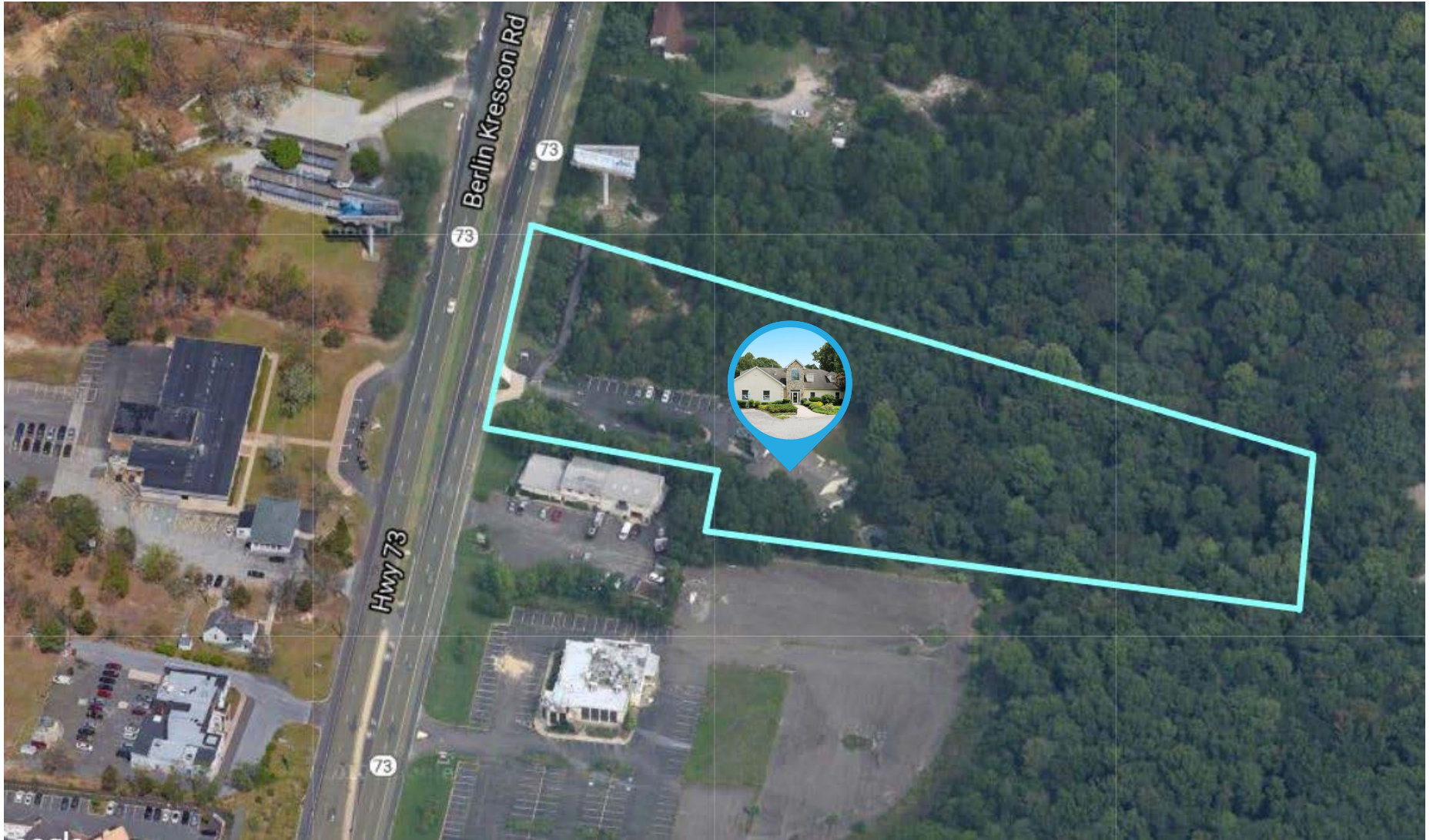
## SITE PLANS



The foregoing information was furnished to us by sources which we deem to be reliable, but no warranty or representation is made as to the accuracy thereof. Subject to correction of errors, omissions, change of price, prior sale or withdrawal from market without notice.

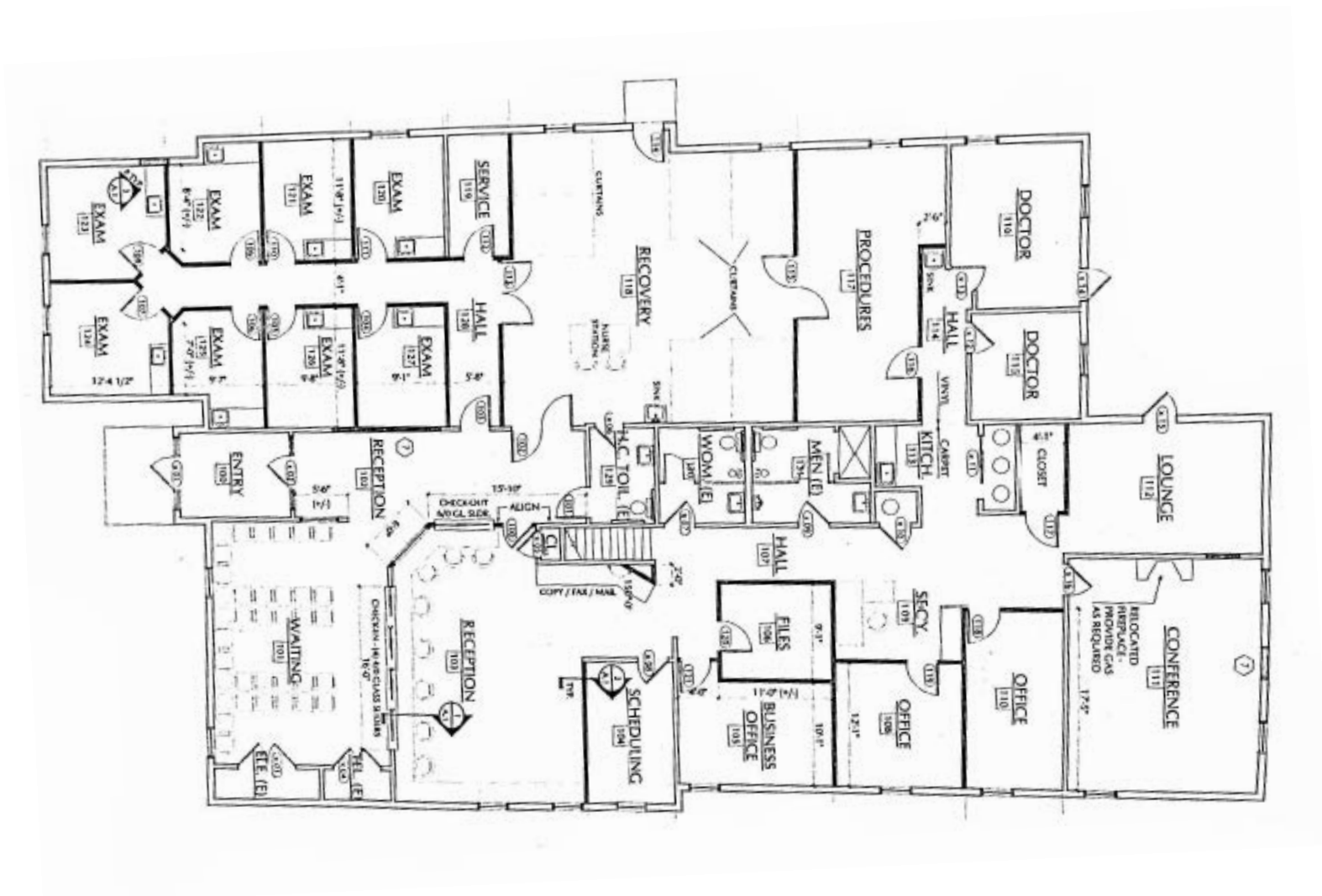


AERIAL MAP



The foregoing information was furnished to us by sources which we deem to be reliable, but no warranty or representation is made as to the accuracy thereof. Subject to correction of errors, omissions, change of price, prior sale or withdrawal from market without notice.

FLOOR PLANS



The foregoing information was furnished to us by sources which we deem to be reliable, but no warranty or representation is made as to the accuracy thereof. Subject to correction of errors, omissions, change of price, prior sale or withdrawal from market without notice.



**ADDITIONAL PHOTOS**



The foregoing information was furnished to us by sources which we deem to be reliable, but no warranty or representation is made as to the accuracy thereof. Subject to correction of errors, omissions, change of price, prior sale or withdrawal from market without notice.