

WOODCREST PAVILION 10 MELROSE AVENUE | CHERRY HILL | NJ



Contact Us

Jason M. Wolf
 Managing Principal
 D 856 857 6301
jason.wolf@wolfcre.com

Building Features

Location	Woodcrest Pavilion 10 Melrose Avenue Cherry Hill, NJ 08003
Size/SF Available	+/-2,693 sf
Asking Lease Price	\$16.00/sf Gross plus utilities
Parking	4.21/1000 sf
Occupancy	Available for immediate occupancy (Lease term expires 8/31/2020)
Signage	Lobby and suite signage
Property/Area Description	<ul style="list-style-type: none"> ▶ Current Law Firm space in four story Class "A" office building ▶ Space is move in ready and has two sides of windows. ▶ Efficient layout with open bullpen areas and individual offices ▶ Granite lobby with views of fountain ▶ Callbox system for after-hours client access ▶ Beautifully landscaped ▶ Conveniently located off Exit 31 on I-295 ▶ Walking distance to Woodcrest PATCO High Speed line Station

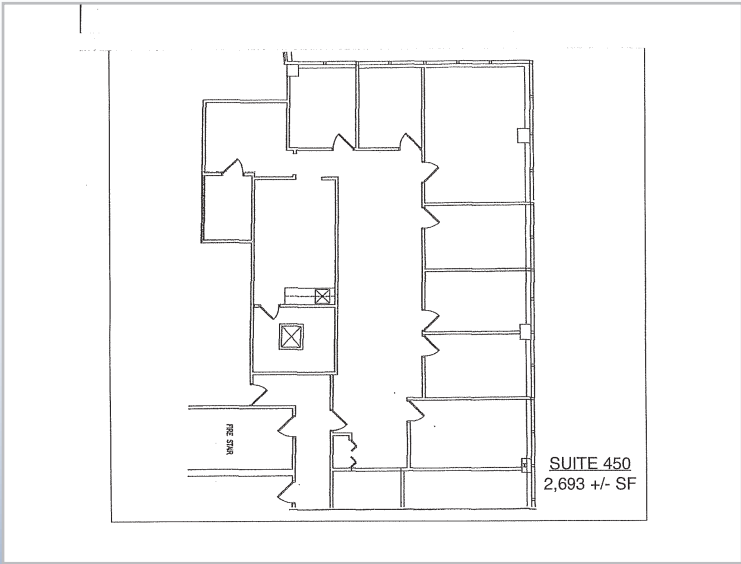
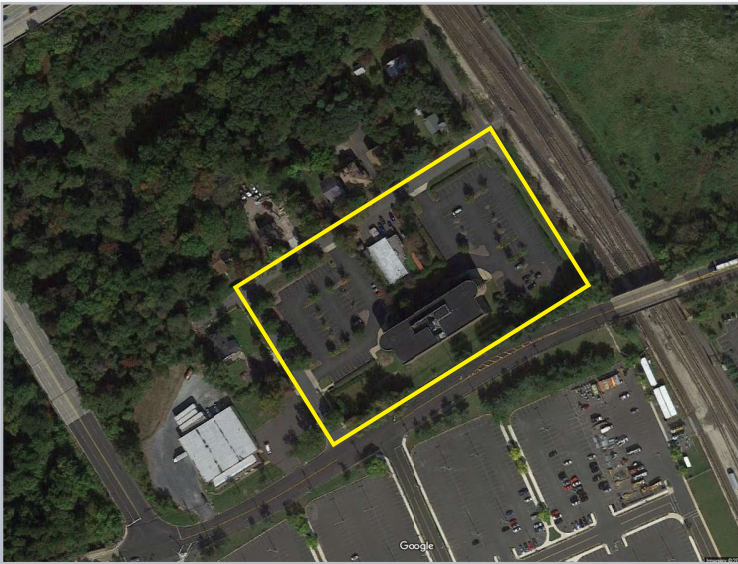
follow us:    

Wolf Commercial Real Estate
www.wolfcre.com

NJ OFFICE
 951 Route 73 North | Suite D
 Marlton, NJ 08053
 P 856 857-6300 | F 856 283-3950

PA OFFICE
 630 Freedom Business Center | 3rd Floor
 King of Prussia, PA 19406
 P 215 799 6900 | F 610 768 7701

Building Successful Relationships



DEMOGRAPHIC SUMMARY

	1 Mile	3 Miles	5 Miles
Population	6,682	94,238	268,126
Household	2,436	37,212	107,588
Median HH Income	\$78,474	\$74,054	\$69,113
Avg HH Income	\$94,240	\$95,895	\$87,718

CONTACT Us

Jason M. Wolf
 Managing Principal
 D 856 857 6301
jason.wolf@wolfcre.com

follow us:    



The foregoing information was furnished to us by sources which we deem to be reliable, but no warranty or representation is made as to the accuracy thereof. Subject to correction of errors, omissions, change of price, prior sale or withdrawal from market without notice.