

# HIGHLY VISIBLE OFFICE PLAZA FOR LEASE

THREE  
MONTHS  
FREE RENT  
(5 YEAR TERM)



## 515 GROVE STREET HADDON HEIGHTS, NJ

**Jason Wolf**  
Managing Principal  
215.588.8800  
jason.wolf@wolfcre.com

**Ryan Barikian**  
Vice President  
856.383.5355  
ryan.barikian@wolfcre.com



The foregoing information was furnished to us by sources which we deem to be reliable, but no warranty or representation is made as to the accuracy thereof.  
Subject to correction of errors, omissions, change of price, prior sale or withdrawal from market without notice.



**Wolf Commercial Real Estate**  
**www.WolfCRE.com**



## PROPERTY DESCRIPTION

**Location:** 515 Grove Street  
Haddon Heights, NJ 08035

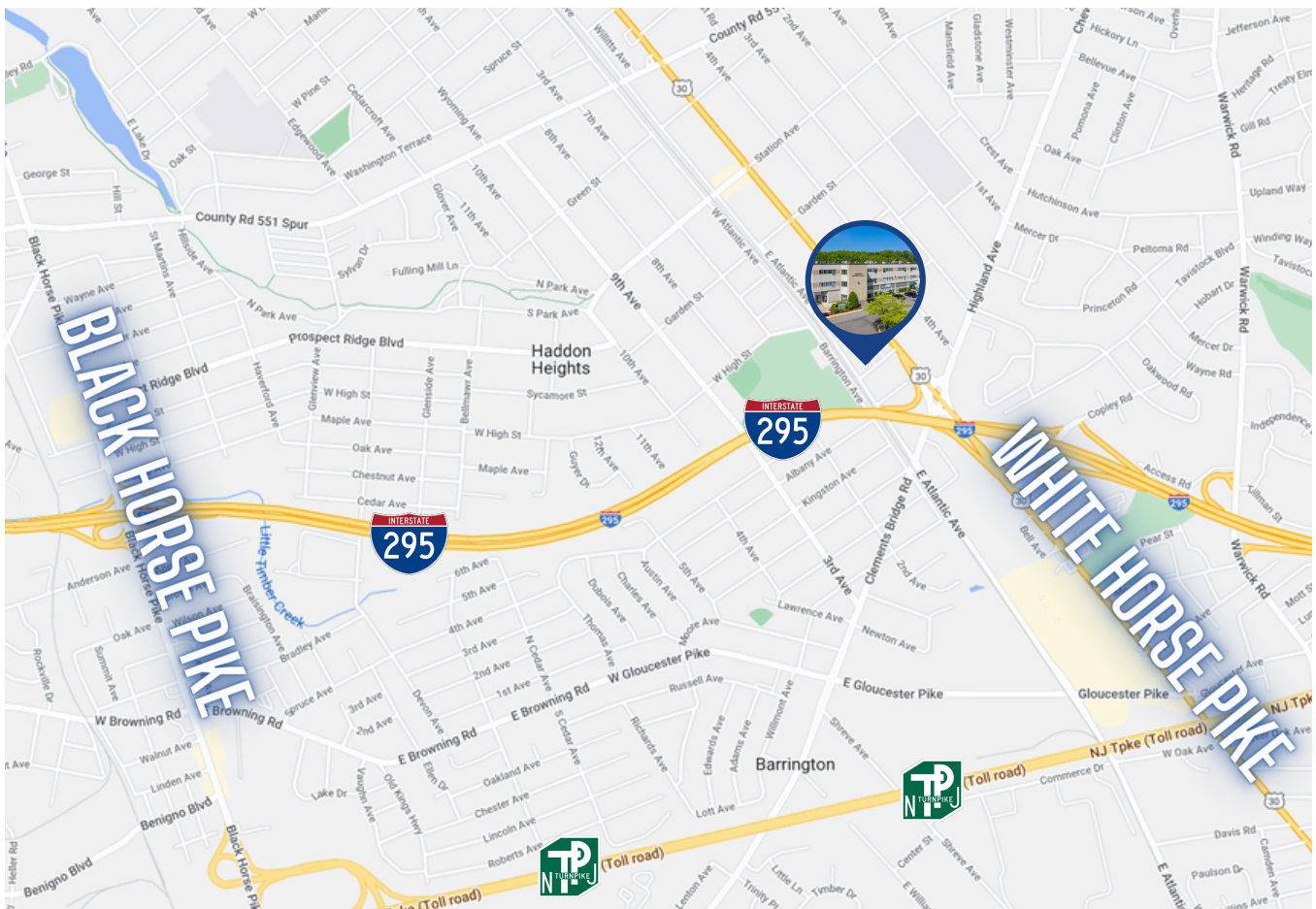
**Size/SF:** Suite 1A-1: 2,200 SF  
First Floor: 2,125 SF (506 Unit #4)  
Suite 3D: 3,127 SF  
Suite 506: 1,918 SF (Current Dental Suite)

**Lease Price:** Call for information

## PROPERTY AREA/HIGHLIGHTS

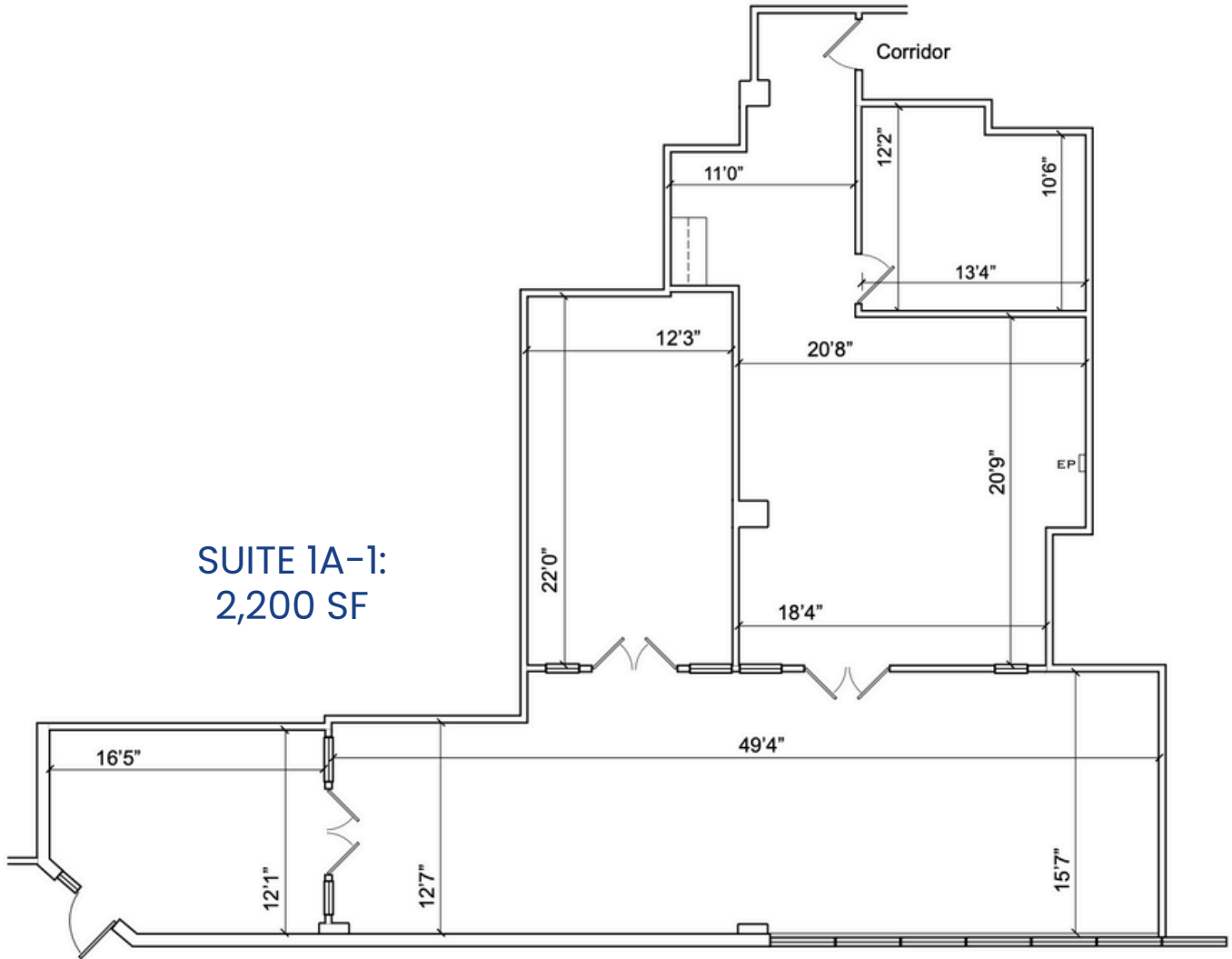
- Ideal for professional office users
- Available for immediate occupancy
- Monument/tenant directory at intersection of Route 30 & Grove Street
- Located immediately off exit 29 of I-295 with easy access to both North & South I-295
- Public transportation available along Route 30 (White Horse Pike)
- Close proximity to White Horse Pike & Black Horse Pike

## AERIAL MAP



The foregoing information was furnished to us by sources which we deem to be reliable, but no warranty or representation is made as to the accuracy thereof. Subject to correction of errors, omissions, change of price, prior sale or withdrawal from market without notice.

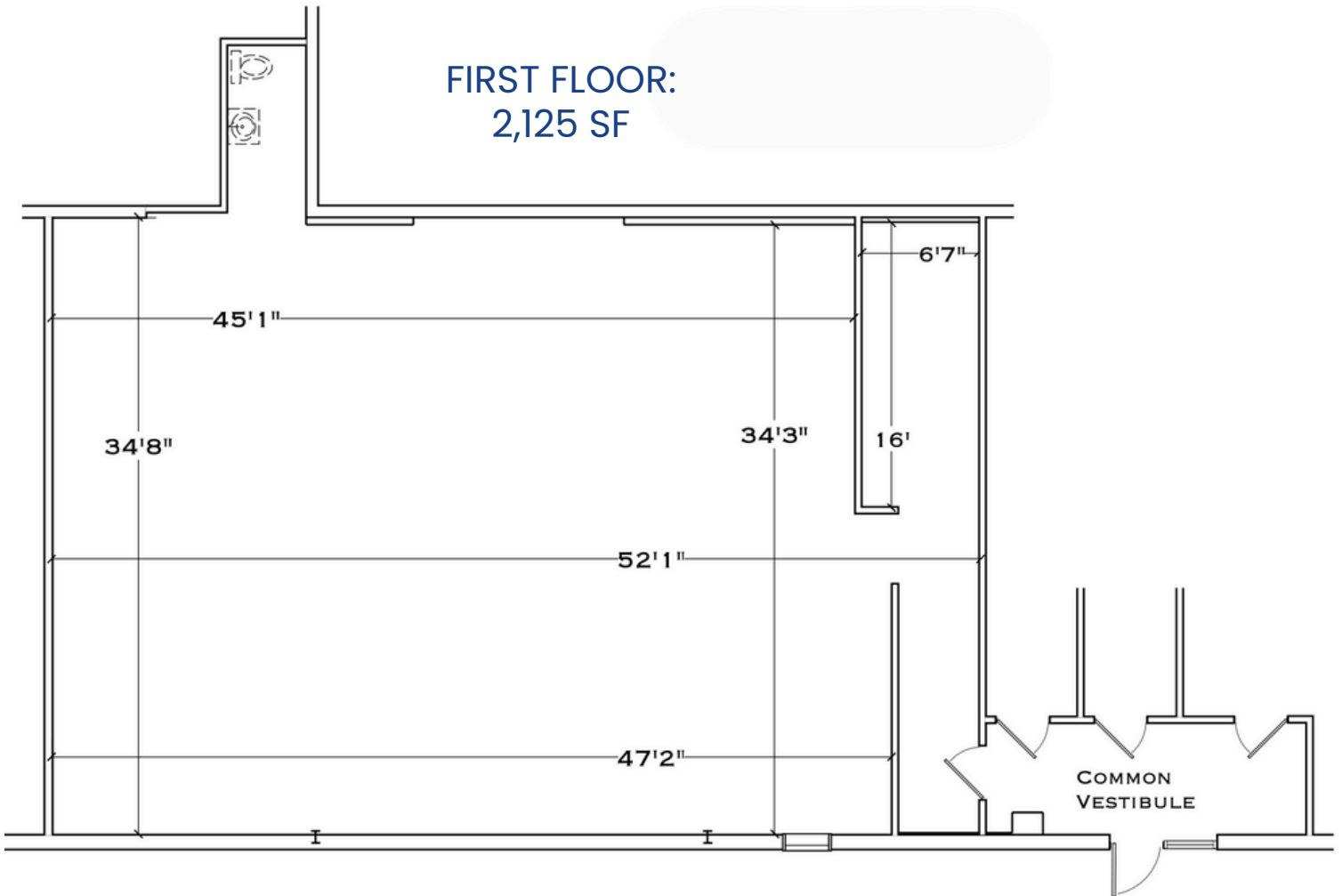
**FLOOR PLAN**



The foregoing information was furnished to us by sources which we deem to be reliable, but no warranty or representation is made as to the accuracy thereof. Subject to correction of errors, omissions, change of price, prior sale or withdrawal from market without notice.

**FLOOR PLAN**

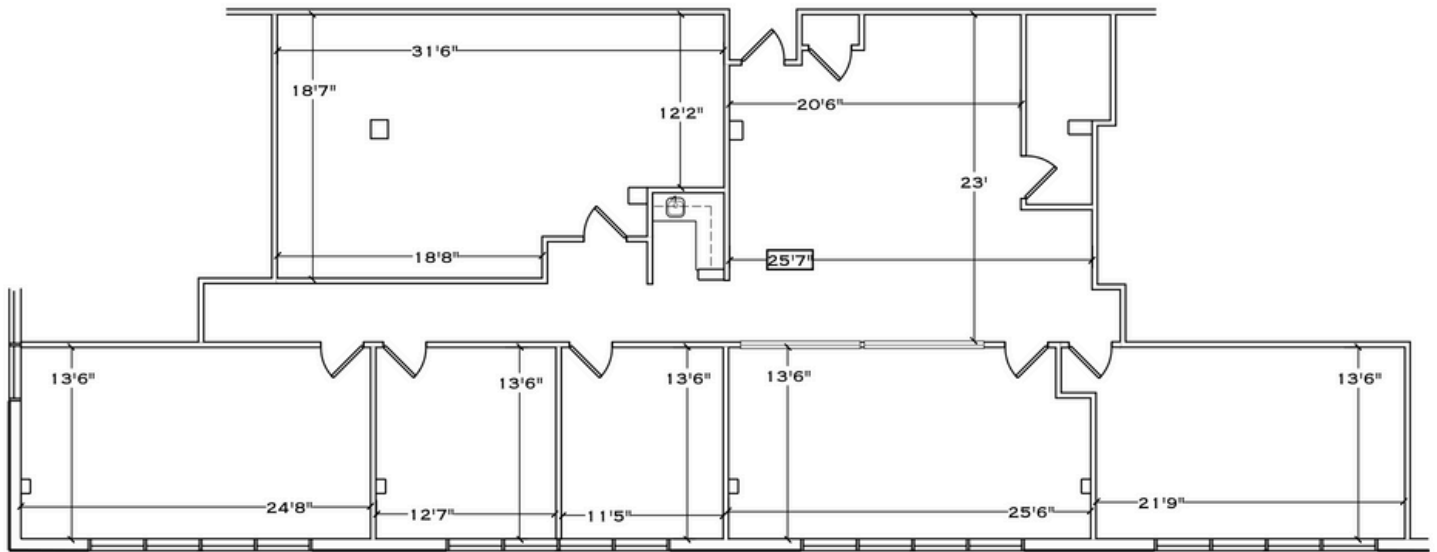
FIRST FLOOR:  
2,125 SF



The foregoing information was furnished to us by sources which we deem to be reliable, but no warranty or representation is made as to the accuracy thereof. Subject to correction of errors, omissions, change of price, prior sale or withdrawal from market without notice.

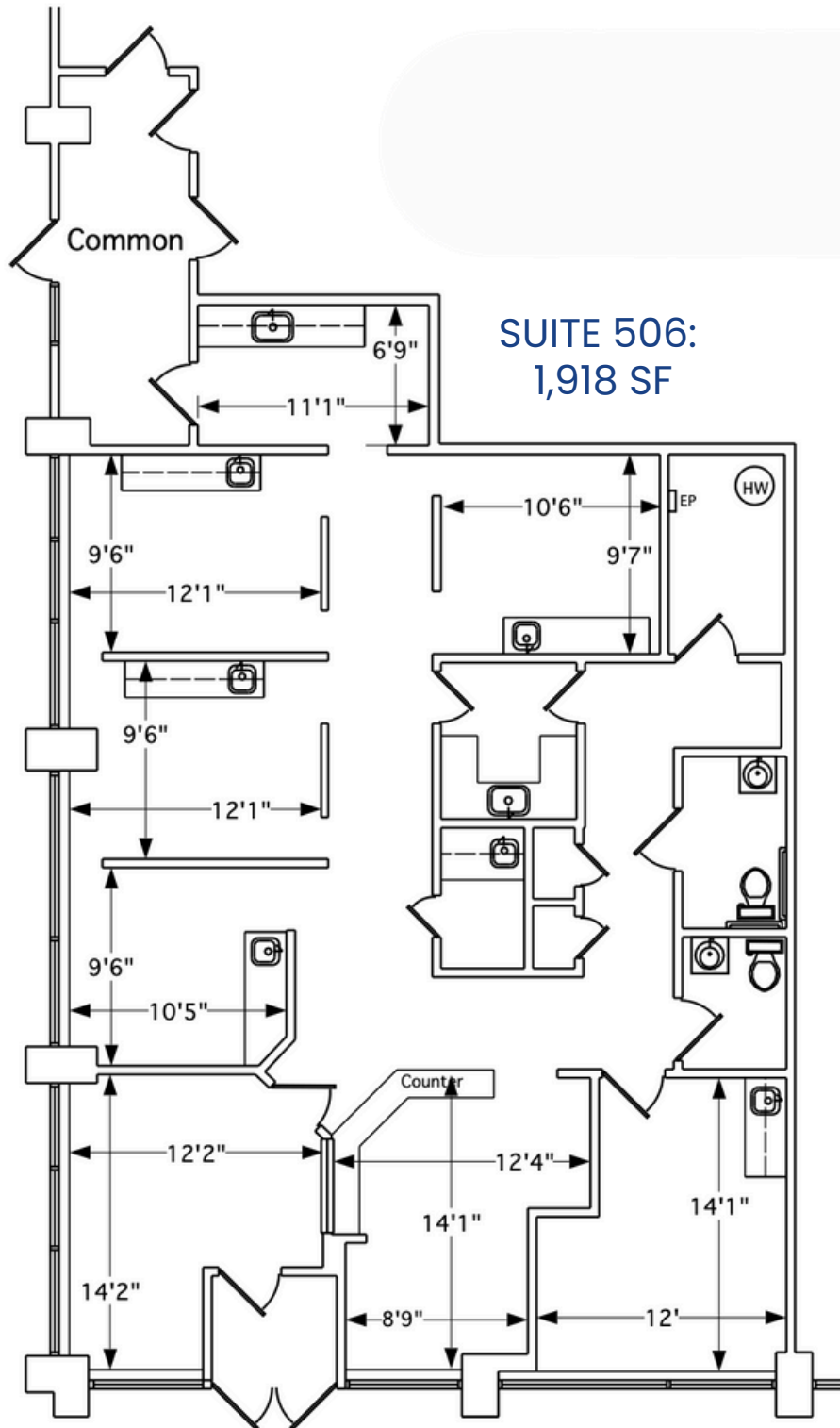
**FLOOR PLAN**

SUITE 3D:  
3,127 SF



The foregoing information was furnished to us by sources which we deem to be reliable, but no warranty or representation is made as to the accuracy thereof. Subject to correction of errors, omissions, change of price, prior sale or withdrawal from market without notice.

**FLOOR PLAN**



The foregoing information was furnished to us by sources which we deem to be reliable, but no warranty or representation is made as to the accuracy thereof. Subject to correction of errors, omissions, change of price, prior sale or withdrawal from market without notice.