

HIGHLY VISIBLE OFFICE PLAZA FOR LEASE

THREE
MONTHS
FREE RENT
(5 YEAR TERM)



515 GROVE STREET HADDON HEIGHTS, NJ

Jason Wolf
Managing Principal
215.588.8800
jason.wolf@wolfcre.com

Ryan Barikian
Vice President
856.383.5355
ryan.barikian@wolfcre.com



The foregoing information was furnished to us by sources which we deem to be reliable, but no warranty or representation is made as to the accuracy thereof.
Subject to correction of errors, omissions, change of price, prior sale or withdrawal from market without notice.



Wolf Commercial Real Estate
www.WolfCRE.com



PROPERTY DESCRIPTION

Location: 515 Grove Street
Haddon Heights, NJ 08035

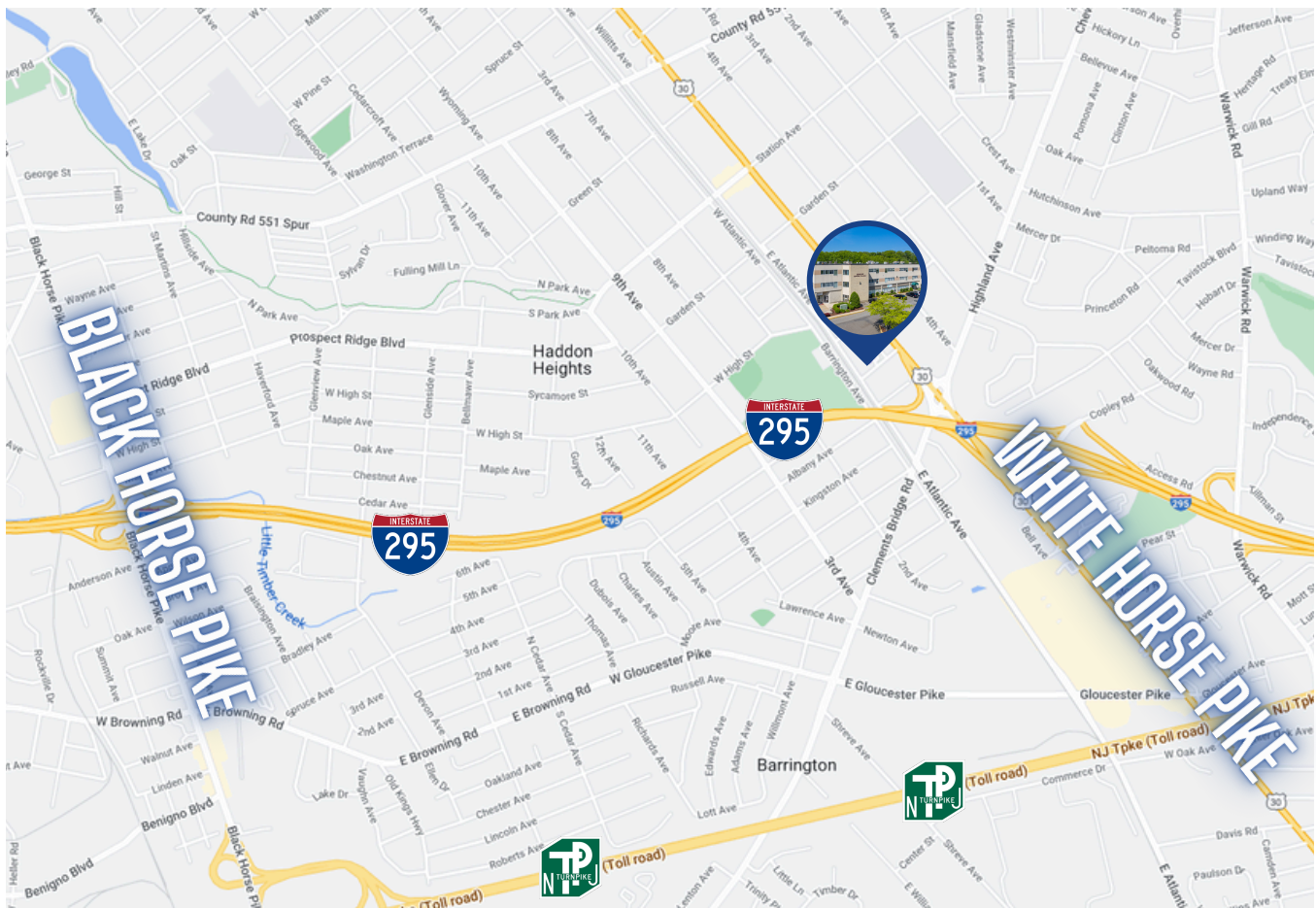
Size/SF: First Floor: 2,125 SF (506 Unit #4)
Suite 3D: 3,127 SF
Suite 506: 1,918 SF (Current Dental Suite)

Lease Price: Call for information

PROPERTY AREA/HIGHLIGHTS

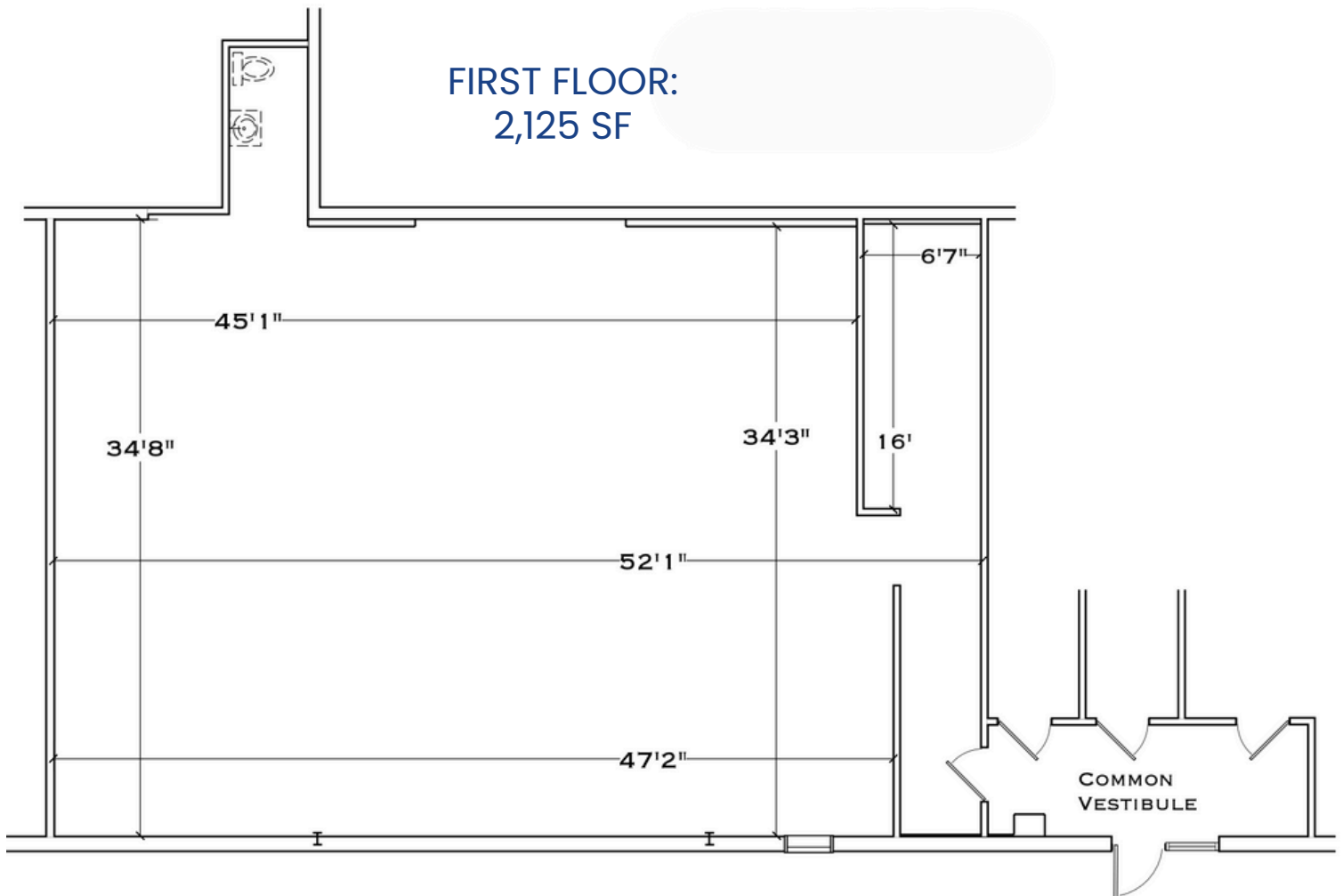
- Ideal for professional office users
- Available for immediate occupancy
- Monument/tenant directory at intersection of Route 30 & Grove Street
- Located immediately off exit 29 of I-295 with easy access to both North & South I-295
- Public transportation available along Route 30 (White Horse Pike)
- Close proximity to White Horse Pike & Black Horse Pike

AERIAL MAP



The foregoing information was furnished to us by sources which we deem to be reliable, but no warranty or representation is made as to the accuracy thereof. Subject to correction of errors, omissions, change of price, prior sale or withdrawal from market without notice.

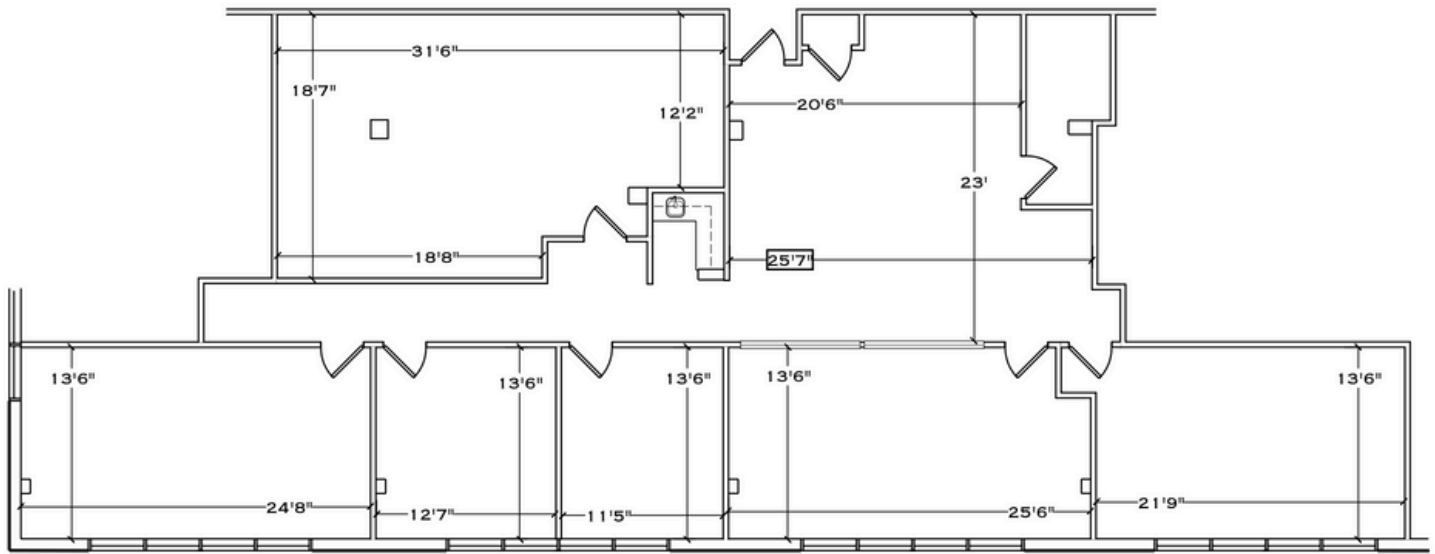
FLOOR PLAN



The foregoing information was furnished to us by sources which we deem to be reliable, but no warranty or representation is made as to the accuracy thereof. Subject to correction of errors, omissions, change of price, prior sale or withdrawal from market without notice.

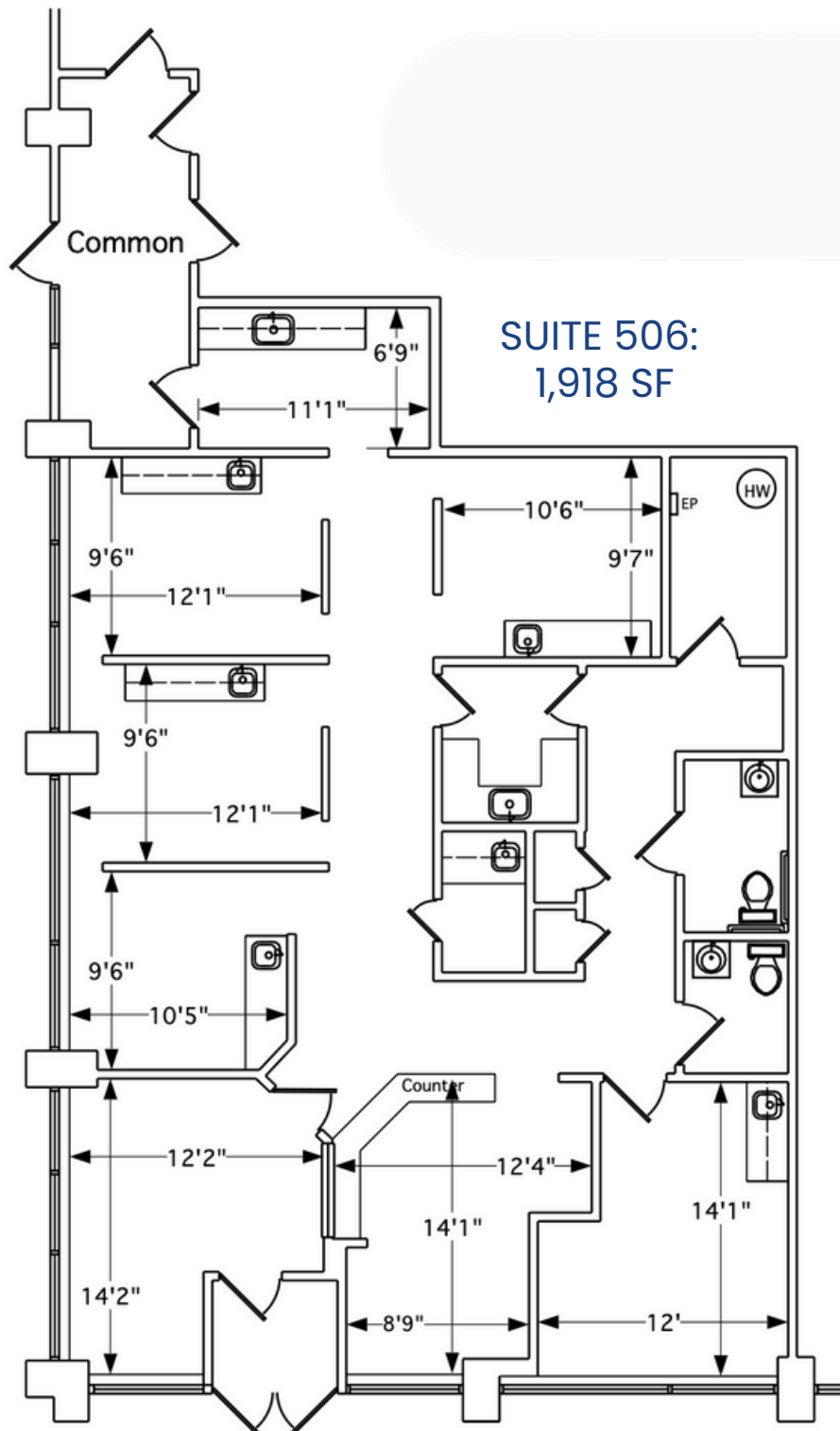
FLOOR PLAN

SUITE 3D:
3,127 SF



The foregoing information was furnished to us by sources which we deem to be reliable, but no warranty or representation is made as to the accuracy thereof. Subject to correction of errors, omissions, change of price, prior sale or withdrawal from market without notice.

FLOOR PLAN



The foregoing information was furnished to us by sources which we deem to be reliable, but no warranty or representation is made as to the accuracy thereof. Subject to correction of errors, omissions, change of price, prior sale or withdrawal from market without notice.