



# RETAIL FOR LEASE

## THE ECHO SHOPPES 200-300 WHITE HORSE ROAD ■ VOORHEES ■ NJ



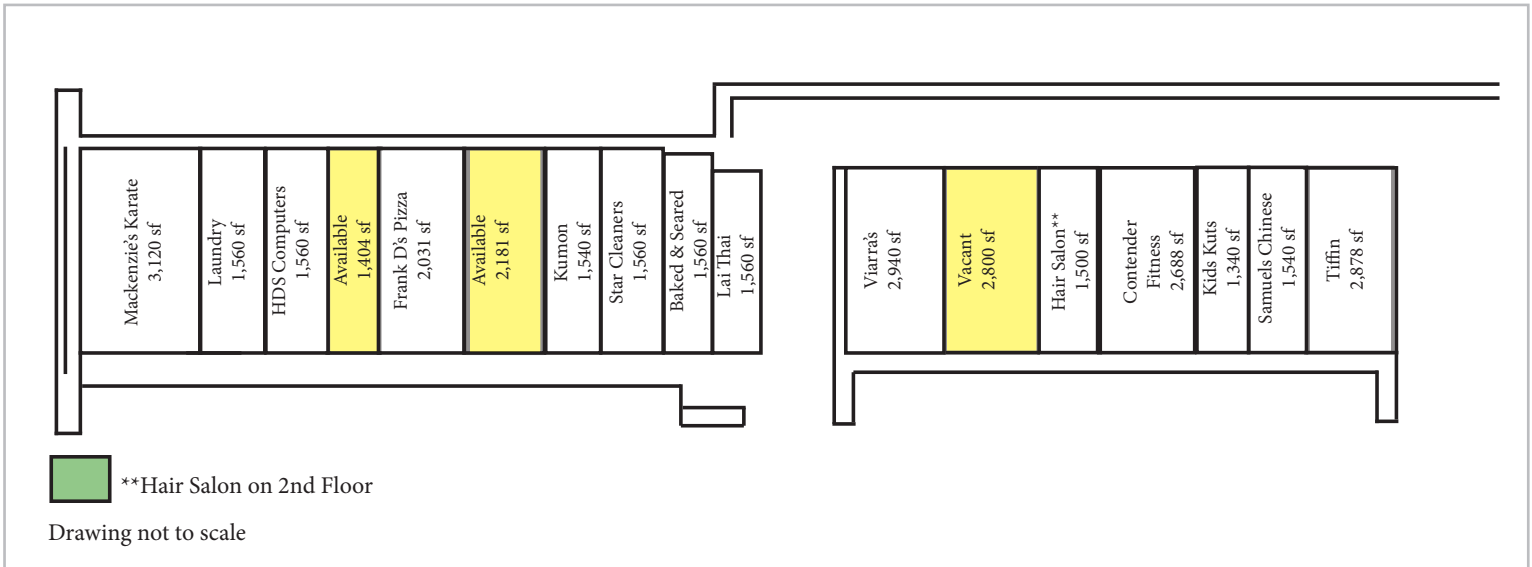
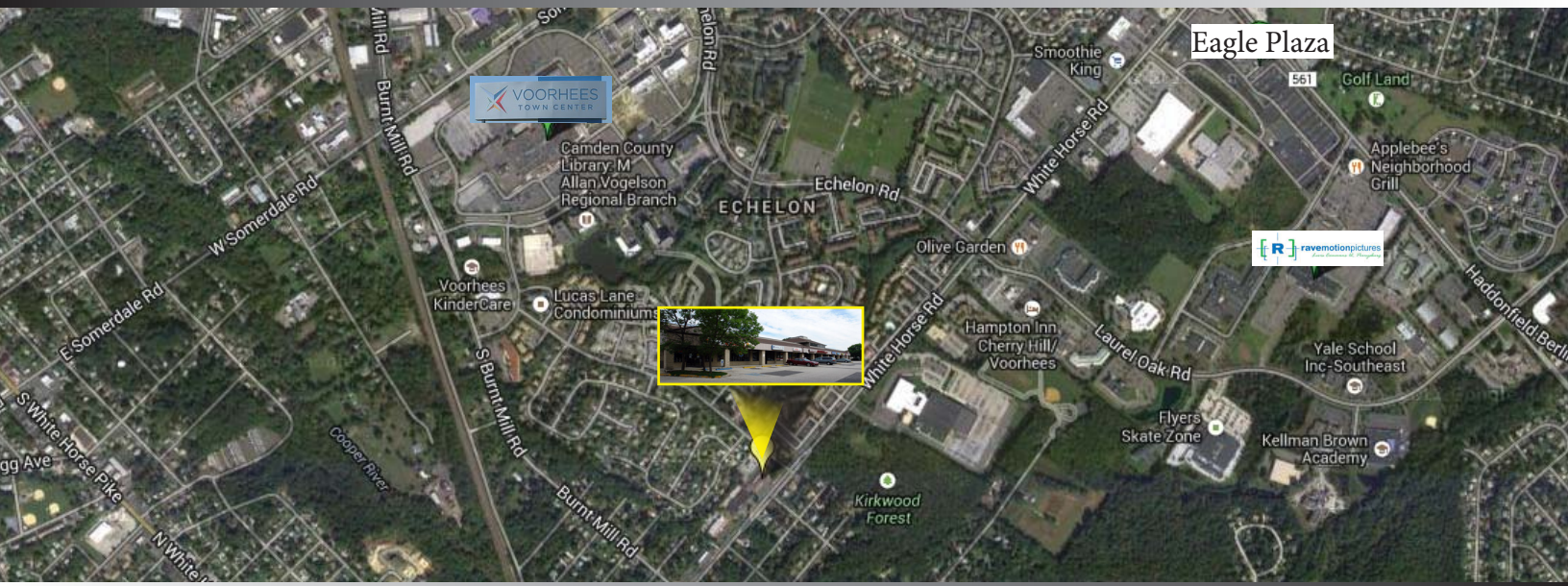
### Contact Us

Leor R. Hemo  
Executive Vice President  
D 856 857 6302  
[leor.hemo@wolfcre.com](mailto:leor.hemo@wolfcre.com)

Christopher R. Henderson  
Associate  
D 856 857 6337  
[chris.henderson@wolfcre.com](mailto:chris.henderson@wolfcre.com)

Building Features	
Location	The Echo Shoppes 200-300 White Horse Road Voorhees, NJ
Size/SF Available	Building 200: +/- 1,404 sf Building 200: +/- 2,181 sf Building 300: +/-2,800 sf
Asking Lease Rate	\$14.00/sf NNN
Parking	+/- 130 spaces
Occupancy	Available for immediate occupancy
Signage	Above store signage
Area Description	The business friendly township of Voorhees boasts ample shopping, eateries, and well groomed neighborhoods. The center is located within a 1 mile radius of thousands of apartment units and houses. Voorhees has become a shopping destination due to it's close location to other towns and the PATCO Speedline from Philadelphia.
Property Description	Retail Center is prominently located on one of the most heavily travelled roads in Voorhees. The variety of restaurants and retail shops in the center attract many of the area's residents. The center is minutes from I-295 and around the corner from the Voorhees Town Center.

follow us:



## DEMOGRAPHIC SUMMARY

	1 Mile	3 Miles	5 Miles
Population	11,222	90,450	230,045
Household	5,150	35,501	90,009
Median HH Income	\$58,094	\$61,923	\$68,018
Avg HH Income	\$75,185	\$83,061	\$87,794
Traffic Count	21,810 (White Horse Rd & Hamilton Dr)		

## CONTACT Us

Leor R. Hemo Executive Vice President D 856 857 6302 leor.hemo@wolfcre.com	Christopher R. Henderson Associate D 856 857 6337 chris.henderson@wolfcre.com
---	--

follow us:   

