



+/- 7,900 SF OFFICE BUILDING FOR SALE

PROFESSIONAL OFFICE BUILDING

15 ROLAND AVENUE ■ MOUNT LAUREL ■ BURLINGTON COUNTY ■ NJ



Contact Us

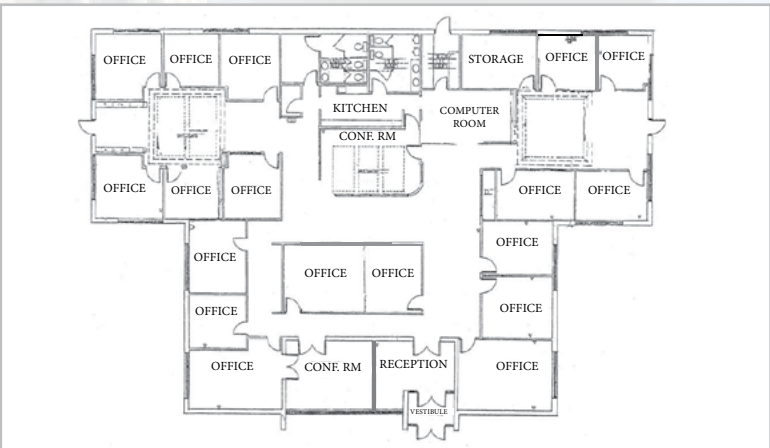
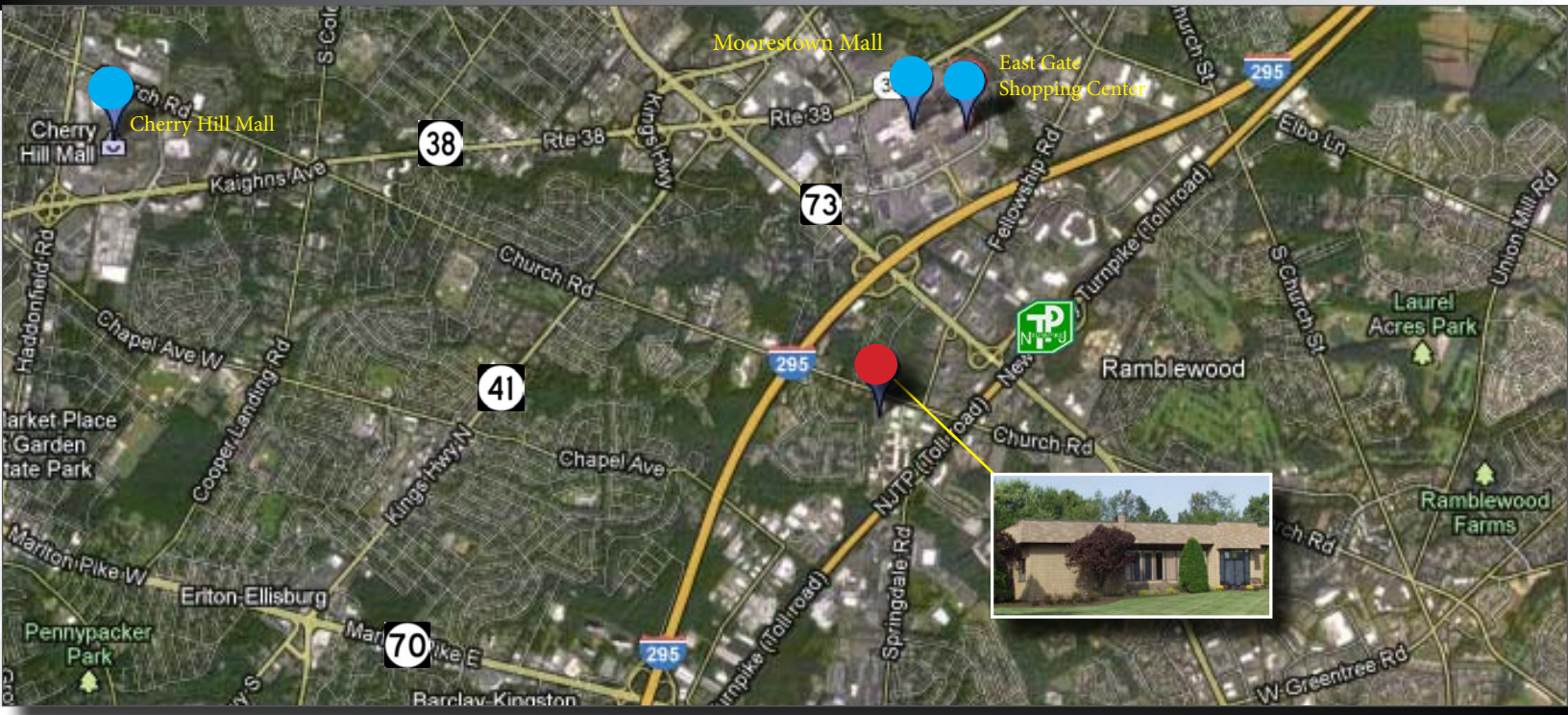
Jason M. Wolf
Principal
D 856 857 6301
jason.wolf@wolfcre.com

Leor R. Hemo
Executive Vice President
D 856 857 6302
leor.hemo@wolfcre.com



Building Features

Location	15 Roland Avenue Mount Laurel, NJ
Size/SF Available	7,900 sf (Divisible with possible ownership leaseback up to 3,000sf)
Asking Sale Price	\$1,185,000
Financing	Up to 100% Financing Available- Call for Details
Parking	7/1000 sf
Occupancy	Available for immediate occupancy
Signage	Monument and building signage available
Area description	Located just off Fellowship Road, near the intersection of Route 73, I-295 (Exit 36) and the New Jersey Turnpike (Exit 4). Proximity to these major routes provides convenient North/South access. The property is within close proximity to the Moorestown & Cherry Hill Malls, East Gate Shopping Center, hotels and restaurants.
Property Description	Well maintained free standing office building with excellent exterior signage and high-end interior finishes. Office building is a great fit for any professional user seeking ample parking and a great location.






DEMOGRAPHIC SUMMARY

	1 Mile	3 Miles	5 Miles
Population	4,305	83,512	209,762
Household	1,831	33,786	81,455
Median HH Income	\$64,217	\$75,946	\$79,551
Avg HH Income	\$84,849	\$94,994	\$101,014
Traffic Count	25,441 (Church Rd & Fellowship Rd)		

CONTACT Us

Jason M. Wolf, Principal
 D 856 857 6301
jason.wolf@wolfcre.com

Leor R. Hemo, Executive Vice President
 D 856 857 6302
leor.hemo@wolfcre.com

Follow Us :   



The foregoing information was furnished to us by sources which we deem to be reliable, but no warranty or representation is made as to the accuracy thereof. Subject to correction of errors, omissions, change of price, prior sale or withdrawal from market without notice.