



135 SOUTH BROAD STREET | WOODBURY, NJ

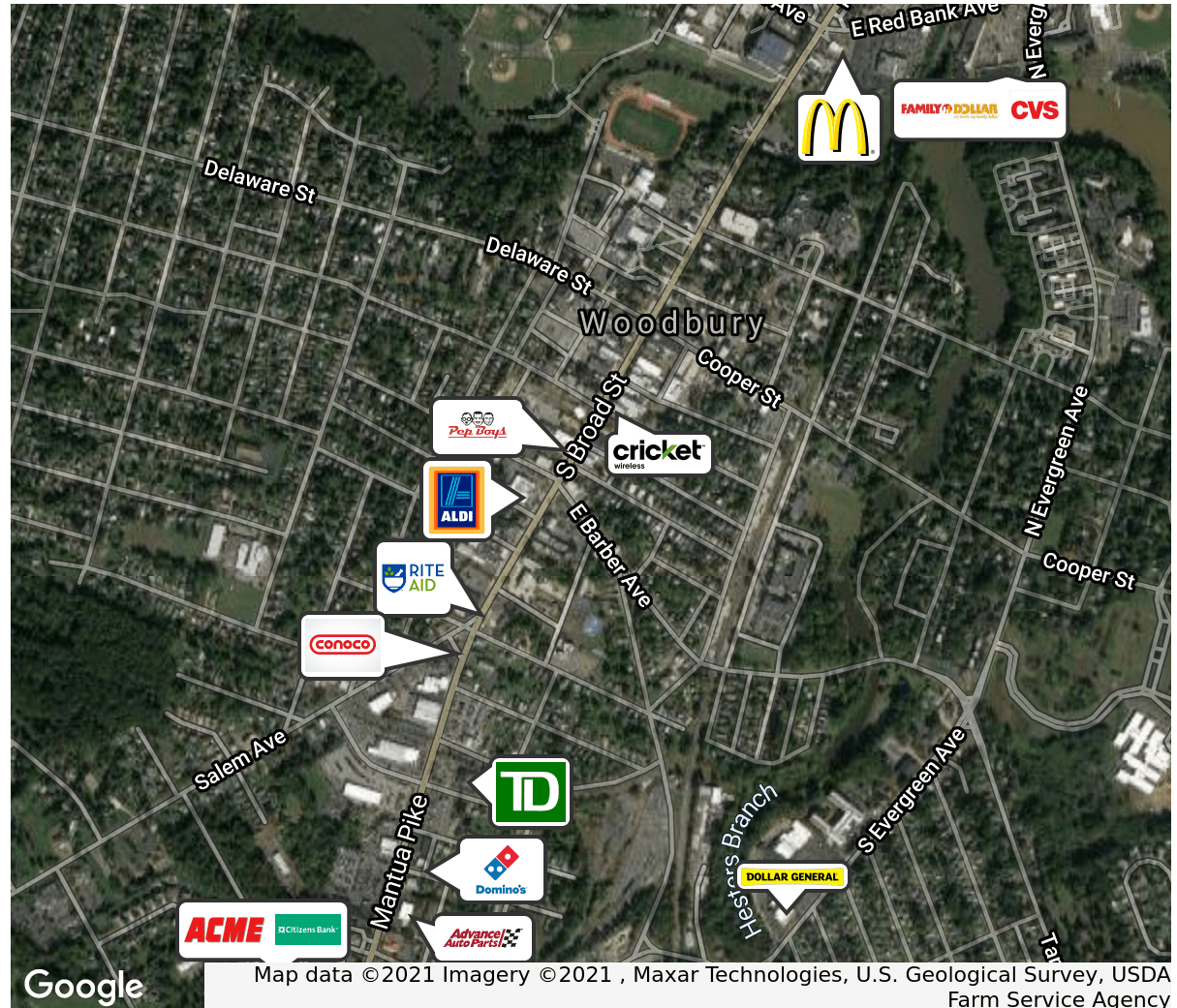


## PROPERTY DESCRIPTION

<b>Location</b>	135 South Broad Street Woodbury, NJ 08096
<b>Size / SF Available</b>	13,500 SF Total - 6,000 SF Office Available - 5,000 SF Warehouse Available
<b>Lease Price</b>	Call for information
<b>Sale Price</b>	Call for information
<b>Property / Area Description</b>	<ul style="list-style-type: none"> <li>• Available for immediate occupancy</li> <li>• Ideal for Owner/User</li> <li>• Ample on-site parking</li> <li>• Building directory sign and sign along South Broad Street entrance</li> <li>• Situated on heavily traveled Broad Street in downtown Woodbury</li> <li>• Surrounded by various retailers, banks, restaurants, and professional offices</li> <li>• Close proximity to I-295, Routes 45, 55 and 42</li> </ul>

## Contact Us

Michael Scanzano  
Senior Advisor  
857.856.6386  
mike.scanzano@wolfcre.com

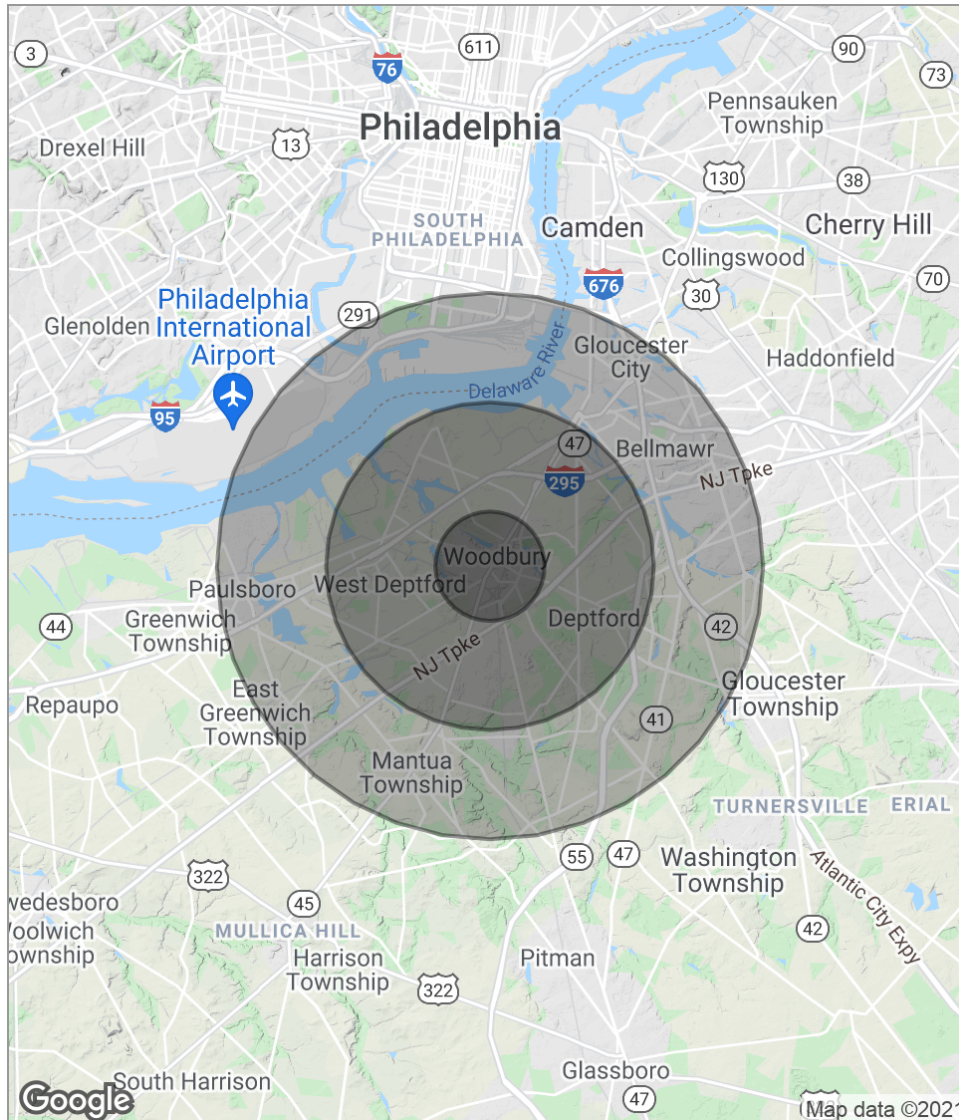


follow us:    

The foregoing information was furnished to us by sources which we deem to be reliable, but no warranty or representation is made as to the accuracy thereof. Subject to correction of errors, omissions, change of price, prior sale or withdrawal from market without notice.



## DEMOGRAPHICS MAP



POPULATION	1 MILE	3 MILES	5 MILES
Total population	13,307	62,332	135,680
Median age	37.6	40.0	39.8
Median age (male)	34.3	37.8	38.4
Median age (Female)	40.8	42.1	41.2
HOUSEHOLDS & INCOME	1 MILE	3 MILES	5 MILES
Total households	5,446	24,939	53,358
# of persons per HH	2.4	2.5	2.5
Average HH income	\$70,717	\$74,842	\$76,378
Average house value	\$232,580	\$246,114	\$247,865

*\* Demographic data derived from 2010 US Census*



The foregoing information was furnished to us by sources which we deem to be reliable, but no warranty or representation is made as to the accuracy thereof. Subject to correction of errors, omissions, change of price, prior sale or withdrawal from market without notice.