



NEW MIXED USE DEVELOPMENT OPPORTUNITY
+/- 2,000 - 60,000 SF RETAIL/COMMERICAL SPACE FOR LEASE



1788 ROUTE 38 | LUMBERTON | NJ

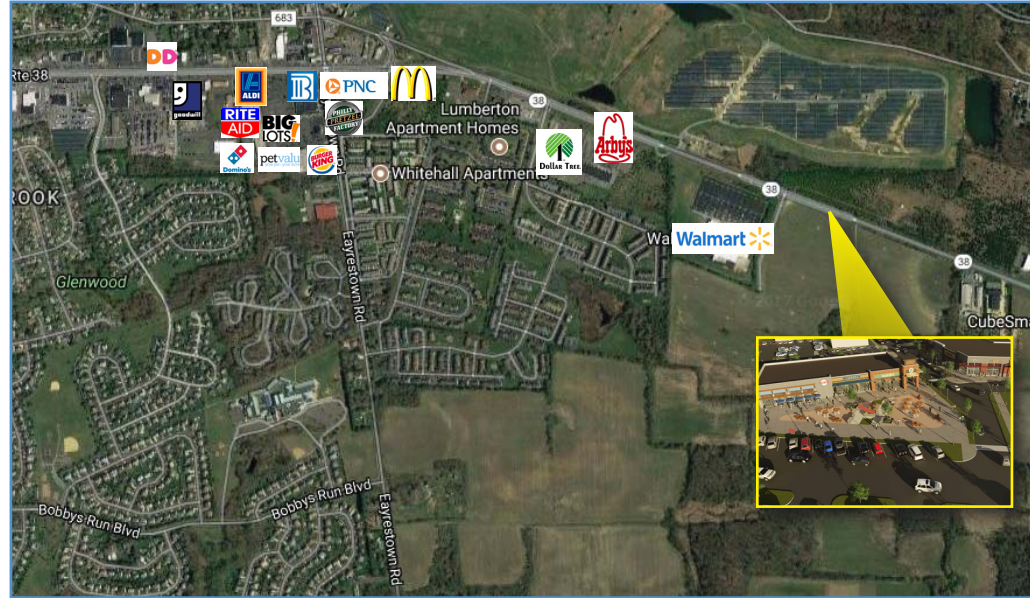
Wolf Commercial Real Estate

follow us:    

www.WolfCRE.com

Property/Area Description

- Location** 1788 Route 38
Lumberton, NJ
- Size/SF Available** 2,000 - 60,000 sf available
- Lease Price** Call for more information
- Signage** Pylon and store signage
- Parking** Ample parking
- Property/Area Description**
 - ▶ Pad Sites available from 2,000-60,000 square feet available
 - ▶ 110,000 sf of retail/commercial is anticipated
 - ▶ Retail center offers availability for local shopping, major retailers and big box grocers and retailers
 - ▶ Expected population to increase by approximately 1000 people within 0.25 miles of the shopping center due to this development alone
 - ▶ Located on Route 38 in the fast growing Township of Lumberton
 - ▶ Paperone homes to construct 90 single family home sites on the same acreage
 - ▶ 300 luxury apartments to be constructed behind the retail



DEMOGRAPHIC SUMMARY

	1 Mile	3 Miles	5 Miles
Population	1,904	30,209	52,209
Household	767	11,198	19,108
Median HH Income	\$76,359	\$70,192	\$76,710
Avg HH Income	\$78,856	\$86,293	\$95,801
Traffic Count	31,300 ADT (State Road 38 & Lumberton Road - .33 miles from location)		

Contact Us

Christopher R. Henderson
Vice President
856 857 6337
chris.henderson@wolfcre.com

Jason M. Wolf
Managing Principal
856 857 6301
jason.wolf@wolfcre.com

follow us:

The foregoing information was furnished to us by sources which we deem to be reliable, but no warranty or representation is made as to the accuracy thereof. Subject to correction of errors, omissions, change of price, prior sale or withdrawal from market without notice.



© 2017 BartonPartners Architects Planners, Inc. All rights reserved.

follow us:    

The foregoing information was furnished to us by sources which we deem to be reliable, but no warranty or representation is made as to the accuracy thereof. Subject to correction of errors, omissions, change of price, prior sale or withdrawal from market without notice.