

930

HARVEST POINT



*930
Harvest
Drive*

*Blue Bell
Pennsylvania
19422*



**BALASHINE
PROPERTIES**



www.WolfCRE.com



Fully Renovated Cafe

The foregoing information was furnished to us by sources which we deem to be reliable, but no warranty or representation is made as to the accuracy thereof. Subject to correction of errors, omissions, change of price, prior sale or withdrawal from market without notice.

BLUE BELL | PENNSYLVANIA

2,000 - 24,742 RSF AVAILABLE FOR LEASE

First Floor Available: 4,024 RSF (Divisible)
Third Floor Available: 5,808 RSF (Divisible)
Fourth Floor Available: 13,783 RSF (Divisible)

Building Amenities

- ▶ Four-Story Class A office building totaling 118,004 SF
- ▶ Newly renovated restrooms, common areas, and lobby directory
- ▶ Vending area available 24/7
- ▶ Tenant only conference center
- ▶ Full time on-site day porter, building engineer and on-site management & ownership
- ▶ Two "Type 1" SLA fiber providers servicing building
- ▶ Back up generator
- ▶ Plug and play suites available - seamless no hassle tenant build-out process
- ▶ Parking ratio of 4/1000 sf with additional parking available on the adjacent lot
- ▶ Easy access from major highways I-476, PA Turnpike and Plymouth Meeting Interchange

Area Amenities

Conveniently located, 930 Harvest Drive is within close proximity of hotels, health clubs, over 34 restaurants, banks and retail.



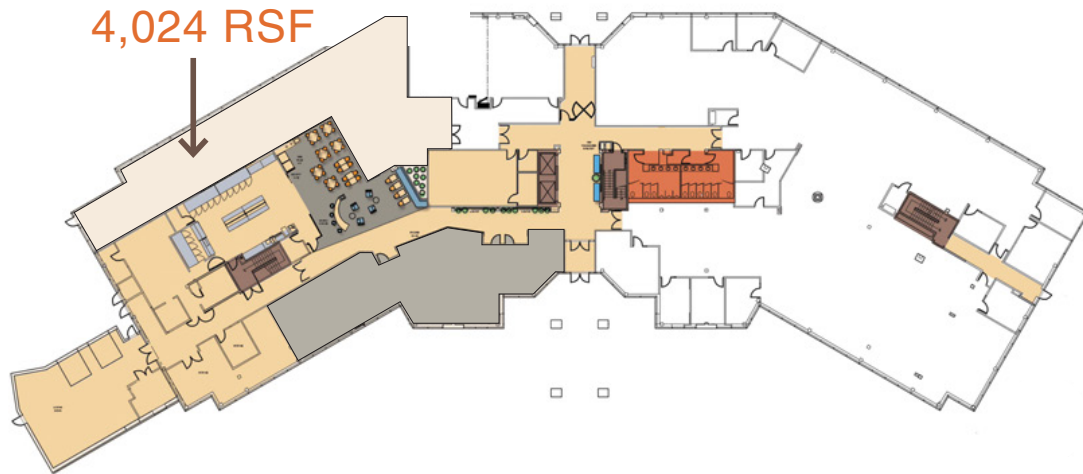
follow us:    

NJ OFFICE
951 Route 73 North | Suite D
Marlton, NJ 08053
P 856 857-6300 | F 856 283-3950

PA OFFICE
630 Freedom Business Center | 3rd Floor
King of Prussia, PA 19406
P 215 799 6900 | F 610 768 7701

SPACE AVAILABLE

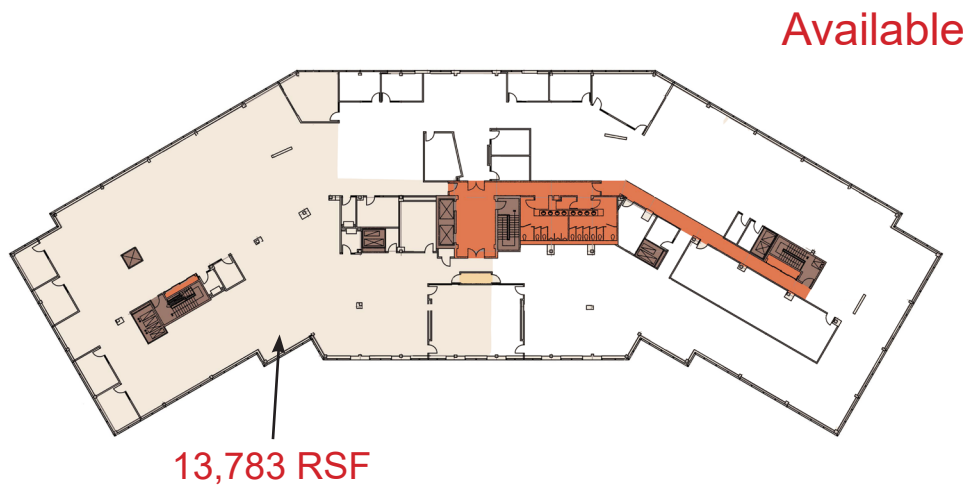
First Floor



Third Floor



Fourth Floor



The foregoing information was furnished to us by sources which we deem to be reliable, but no warranty or representation is made as to the accuracy thereof. Subject to correction of errors, omissions, change of price, prior sale or withdrawal from market without notice.

TENANT SATISFACTION

TENANT SATISFACTION IS OUR #1 PRIORITY
930 Harvest Drive, Blue Bell, PA

- Responsive, on-site ownership and management*
- Seamless no hassle tenant build-out process*
- Newly renovated building cafe in addition to a 24/7 vending area*
- Wifi available throughout the building*
- Newly renovated common areas, lobby directory and restrooms*
- On-site day porter to immediately address Tenant maintenance requests*
- Beautiful Class A building in a park-like setting with abundant parking and exceptional glass lines*

follow us:    

NJ OFFICE
951 Route 73 North | Suite D
Marlton, NJ 08053
P 856 857-6300 | F 856 283-3950

PA OFFICE
630 Freedom Business Center | 3rd Floor
King of Prussia, PA 19406
P 215 799 6900 | F 610 768 7701

AREA AMENITIES WITHIN 3 MILE RADIUS

HOTELS AND CORPORATE HOUSING

Courtyard by Marriott
Extended Stay America
Hilton Doubletree Guest Suites
Hyatt Summerfield Suites
Korman Communities
Marriott Spring Hill Suites

CHILD CARE FACILITIES

Chesterbrook Academy
Flanagan's Pre-School
Goddard School
KinderCare

HEALTH CLUBS

Ambler Area YMCA
LA Fitness
Plymouth Meeting Community Center
Retro Fitness

RESTAURANTS

Benihana
Blue Bell Inn
Blue Fin
Broad Axe Tavern
California Pizza Kitchen Capone's Restaurant Carmine's
Italian Grille Chick Fil-A
Chipotle Mexican Grill
Dave and Buster's
Dunkin Donuts
El Sarape Mexican Restaurant Houlihan's
Lai Lai Garden
L'Angolo Blue
Lee's Hoagie House Manhattan Bagel McDonald's
Mirna's Café
Olympia Pizzeria & Restaurant P.F. Chang China Bistro
Palermo Pizza
Phil's Tavern
Plaza Azteca
PJ Whelihans Pub
Radice
Redstone American Grill Reed's Blue Bell
Ristorante Castello Starbuck's
Subway
Thai Orchid
Wawa
Whole Foods Market & Cafe

GOLF COURSES AND COUNTRY CLUBS

Blue Bell Country Club
Cedarbrook Country Club
Meadowlands Country Club
Mermaid Lake
Plymouth Country Club

TRANSPORTATION

Dave's Best Limousine
King Limousine Service
Main Line Taxi and Limousine Maxwell Taxi
Philadelphia International Airport
SEPTA - Route 98
Wings Field (Private Airport)

PUBLIC LIBRARY

Wissahickon Valley Public Library - Blue Bell
Wissahickon Valley Public Library - Ambler

POST OFFICES

US Post Office - Blue Bell
US Post Office - Ambler

BANKS

Bank of America
Citizen's Bank
Conestoga Bank
First Niagara
PNC Bank
Sovereign Bank
StoneBridge Bank
TD Bank
Vist Bank
Wells Fargo Bank

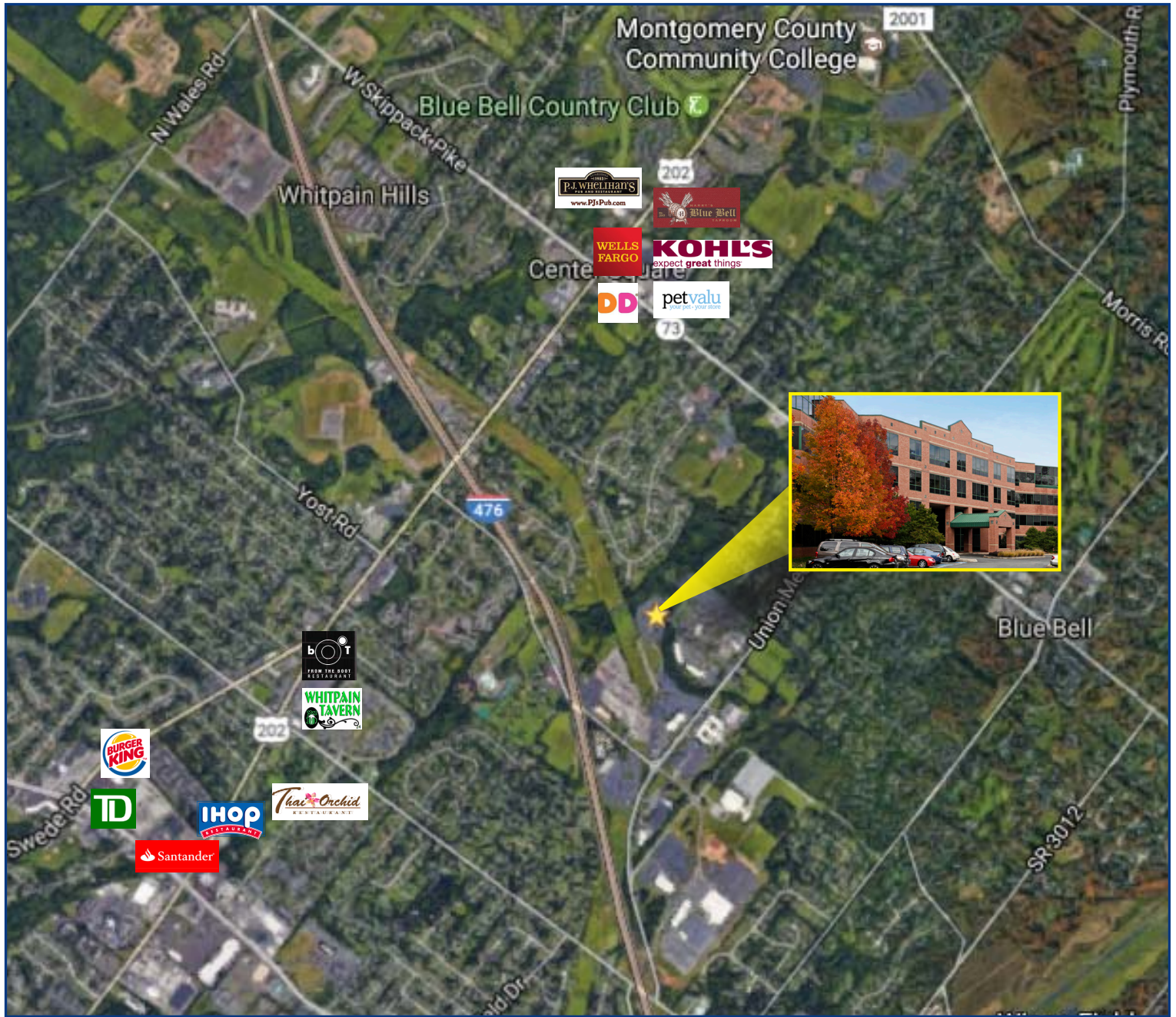
GAS STATIONS

Sunoco
Lukoil

OTHERS

Fed Ex Kinko's
Grace Cleaners
Penn Bell Cleaners
Whitpain Cleaners
Whitpain Township Building

PROPERTY LOCATION



Contact Us

Andrew Maristch, III
Vice President
Corporate Services & Portfolios
D 215 799 6141 M 215 605 8018
drew.maristch@wolfcre.com

Anthony V. Mannino, Esq.
Vice President
Corporate Strategies
D 215 799 6140 M 215 470 6084
anthony.mannino@wolfcre.com

Jason M. Wolf
Managing Principal
D 215 799 6900 M 215 588 8800
jason.wolf@wolfcre.com

follow us:    

NJ OFFICE
951 Route 73 North | Suite D
Marlton, NJ 08053
P 856 857-6300 | F 856 283-3950

PA OFFICE
630 Freedom Business Center | 3rd Floor
King of Prussia, PA 19406
P 215 799 6900 | F 610 768 7701



NJ OFFICE
951 Route 73 North | Suite D
Marlton, NJ 08053
P 856 857-6300 | F 856 283-3950

PA OFFICE
630 Freedom Business Center | 3rd Floor
King of Prussia, PA 19406
P 215 799 6900 | F 610 768 7701

www.WolfCRE.com