

SHOPS AT BURLINGTON

201 WEST ROUTE 130 | BURLINGTON | NJ



Contact Us

Christopher R. Henderson
 Vice President
 D 856 857 6337
chris.henderson@wolfcre.com

Jason M. Wolf
 Managing Principal
 D 856 857 6301
jason.wolf@wolfcre.com

Building Features

| | |
|---------------------------|--|
| Location | Shops at Burlington 201 West Route 130 Burlington, NJ |
| Size/SF for Lease | +/-2,500 sf |
| Asking Lease Price | \$15.00-\$17.00/sf Gross plus utilities |
| Parking | Abundant Parking |
| Occupancy | Available for immediate occupancy |
| Signage | Pylon and above store signage available |
| Property/Area Description | <ul style="list-style-type: none"> ▶ Neighborhood strip center located on Route 130 in Burlington ▶ Easy access to all points in New Jersey & Pennsylvania. Minutes from the Burlington Bristol Bridge ▶ Great Visibility and signage |

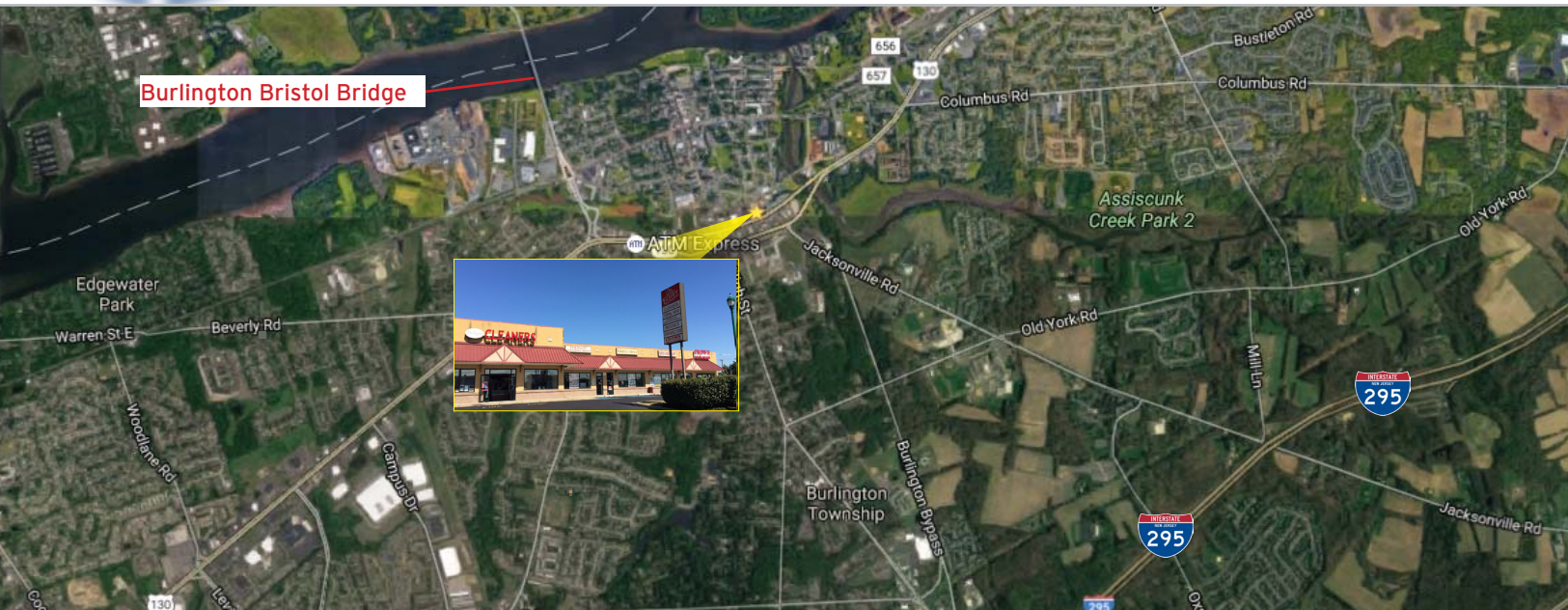
follow us:    

Wolf Commercial Real Estate
www.wolfcre.com

NJ OFFICE
 951 Route 73 North | Suite D
 Marlton, NJ 08053
 P 856 857-6300 | F 856 283-3950

PA OFFICE
 630 Freedom Business Center | 3rd Floor
 King of Prussia, PA 19406
 P 215 799 6900 | F 610 768 7701

Building Successful Relationships



DEMOGRAPHIC SUMMARY

| | 1 Mile | 3 Miles | 5 Miles |
|------------------|----------|----------|----------|
| Population | 9,938 | 70,641 | 163,173 |
| Household | 3,773 | 25,607 | 60,461 |
| Median HH Income | \$56,383 | \$63,731 | \$64,449 |
| Avg HH Income | \$69,926 | \$77,349 | \$79,313 |

CONTACT Us

Christopher R. Henderson, Vice President
 D 856 857 6337
chris.henderson@wolfcre.com

Jason M. Wolf, Managing Principal
 D 856 857 6301
jason.wolf@wolfcre.com

follow us:    



The foregoing information was furnished to us by sources which we deem to be reliable, but no warranty or representation is made as to the accuracy thereof. Subject to correction of errors, omissions, change of price, prior sale or withdrawal from market without notice.