



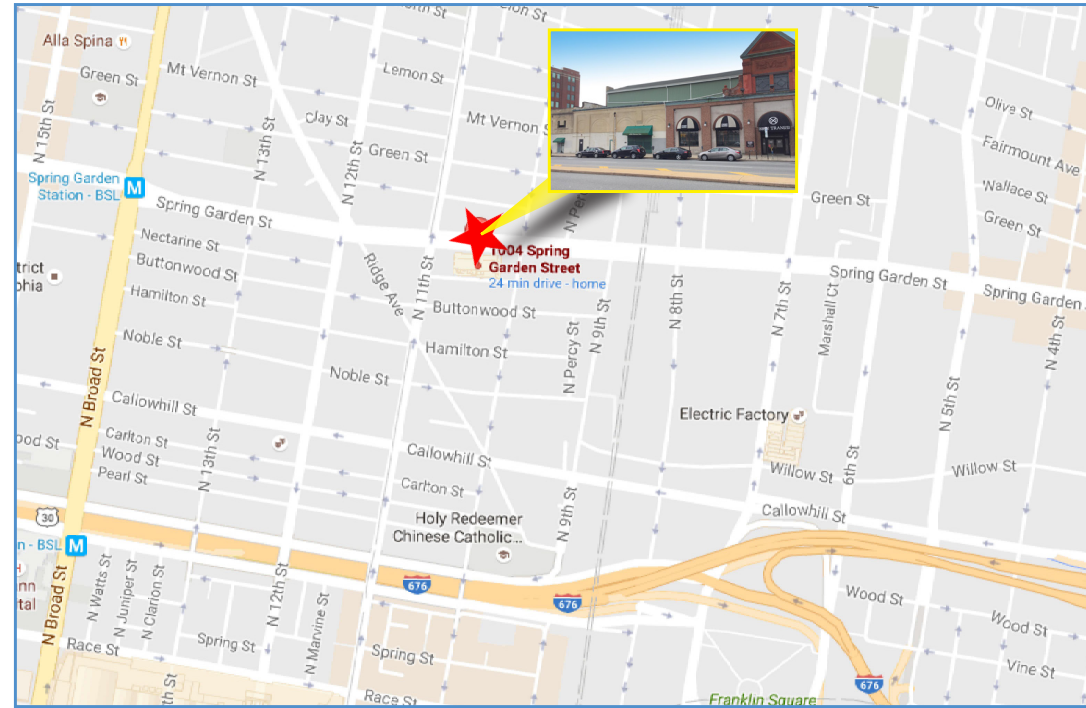
1004-1026 SPRING GARDEN STREET | PHILADELPHIA | PA



Wolf Commercial Real Estate

follow us:    

www.wolfcre.com



Property Description

Location	Union Transfer Annex 1004-1026 Spring Garden Street, Philadelphia, PA 19123
Size/SF Available	+/- 2,200 SF, 6,820 SF or 9,020 SF contiguous. Mezzanine floor available
Asking Lease Price	\$22.50/sf NNN
Parking	Street parking
Occupancy	Available for immediate occupancy
Signage	Building and monument
Property/Area Description	Adjacent to the legendary Union Transfer. First floor retail/restaurant/professional now available for lease in this high profile Landmark location in a rapidly changing area of Philadelphia. Building offers High ceilings, historical architecture and great ownership. Surrounded by residential, office, schools, and healthcare. Very Strong vehicle traffic within a rapidly changing area.

Demographics 1 Mile Radius of Property

Population - 56,976
Number of Households - 28,757
Median Household Income - \$56,634
Avg Household Income - \$81,257

Contact Us

Leor R. Hemo, Executive Vice President
 P 215 799 6900
 M 215 514 1750
leor.hemo@wolfcre.com

follow us:    

The foregoing information was furnished to us by sources which we deem to be reliable, but no warranty or representation is made as to the accuracy thereof. Subject to correction of errors, omissions, change of price, prior sale or withdrawal from market without notice.



1004-1026

SPRING GARDEN STREET

PHILADELPHIA | PA

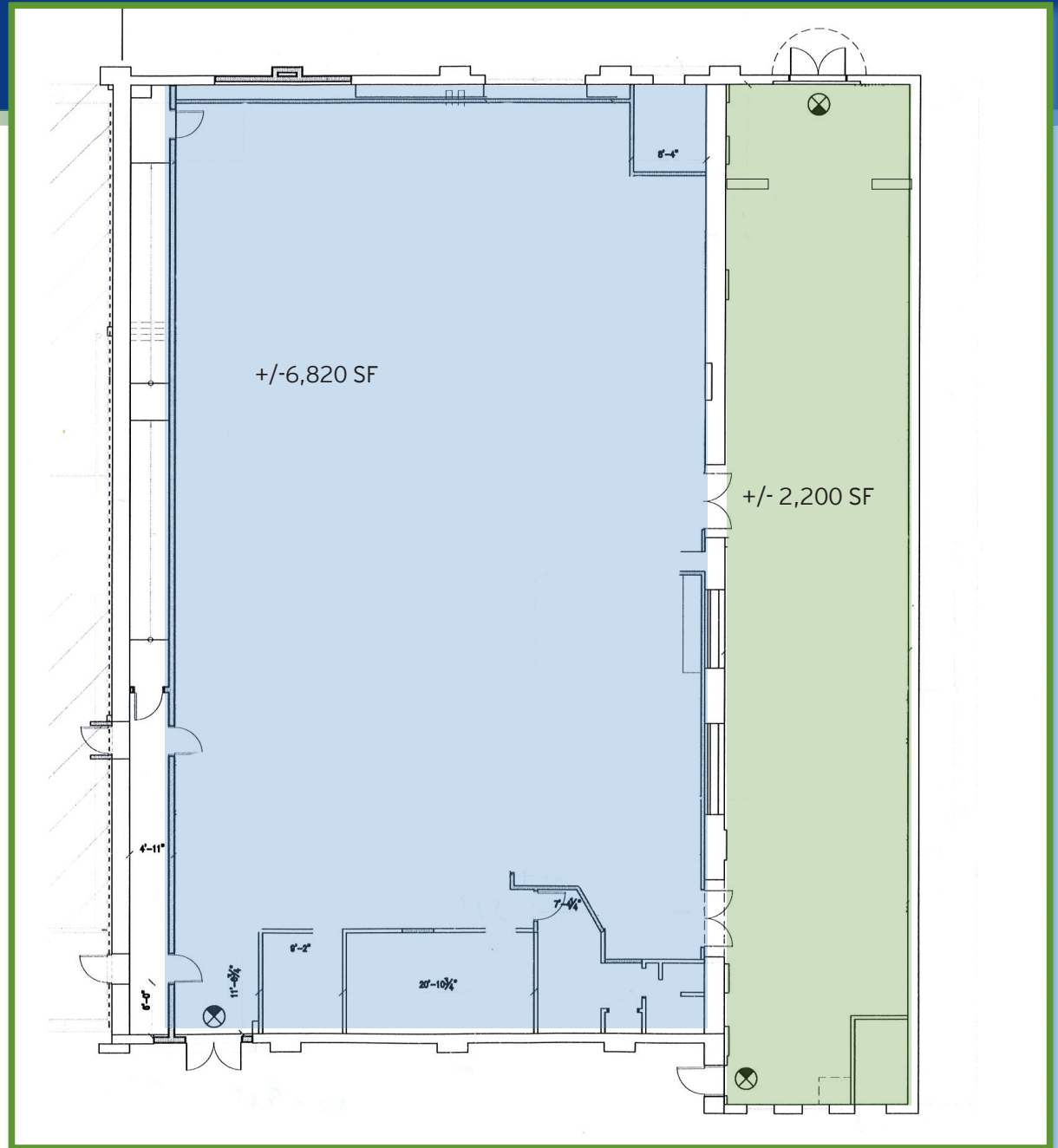
SPACE AVAILABLE

+/- 2,200 SF

+/- 6,820 SF

or 9,020 SF contiguous

Mezzanine floor is also available



The foregoing information was furnished to us by sources which we deem to be reliable, but no warranty or representation is made as to the accuracy thereof. Subject to correction of errors, omissions, change of price, prior sale or withdrawal from market without notice.

Wolf Commercial Real Estate



www.wolfcre.com