



END-CAP RETAIL SPACE FOR LEASE

FORMER DUNKIN DONUTS END-CAP 3211 ROUTE 38 | MOUNT LAUREL | NJ



Contact Us

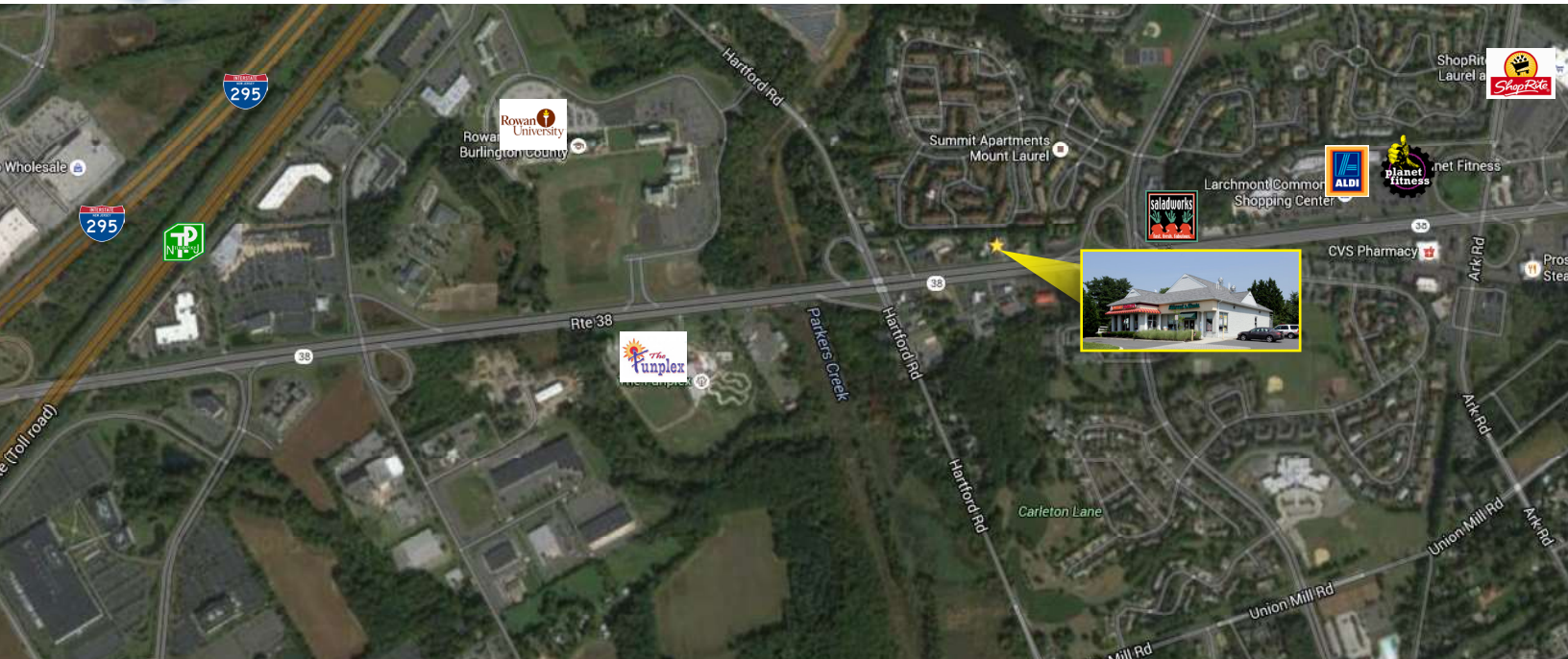
Leor R. Hemo
Executive Vice President
D 856 857 6302
leor.hemo@wolfcre.com

Jason M. Wolf
Managing Principal
D 856 857 6301
jason.wolf@wolfcre.com

Building Features	
Location	3211 Route 38 Mount Laurel, NJ
Size/SF Available	+/- 1,716 SF plus 500 SF lower level storage
Asking Lease Price	\$50,000.00 NNN (Annual rent)
Occupancy	Available for immediate possession
Signage	Monument and above store signage available
Parking	Ample parking available
Area /Property Description	<ul style="list-style-type: none"> ▶ Landmark retail location next to Abbruzzi & Giunta's Italian Market ▶ Conveniently located on Route 38 in Mount Laurel with great visibility and signage



Building Successful Relationships



DEMOGRAPHIC SUMMARY

	1 Mile	3 Miles	5 Miles
Population	8,942	40,054	133,117
Household	4,286	16,309	49,742
Median HH Income	\$76,739	\$92,682	\$90,401
Avg HH Income	\$92,912	\$119,976	\$113,989

CONTACT Us

Leor R. Hemo, Executive Vice President
 D 856 857 6302
leor.hemo@wolfcre.com

Jason M. Wolf, Managing Principal
 856 857 6301
jason.wolf@wolfcre.com

follow us:    