



2 PAD SITES AVAILABLE FOR SALE/LEASE

# PAD SITES AVAILABLE FOR SALE/LEASE BERLIN CROSS KEYS ROAD | SICKLERVILLE | NJ



Building Features	
Location	Berlin Cross Keys Road Block 101 Lots 6 & 7 Sicklerville, NJ
Acreage	Lot 3.06 Pad Site - 1.94 Acres Lot 3.07 Pad Site - 1.84 Acres
Sale Price	Lot 3.06 Pad Site - 1.94 Acres - \$509,000 (Per Acre) Lot 3.07 Pad Site - 1.84 Acres - \$350,000 (Per Acre)
Lease Price	Call for information
Zoning	Commercial
Property/Area Description	<ul style="list-style-type: none"> <li>▶ Highly visible Pad sites available for sale</li> <li>▶ Located on Berlin Cross Keys Road in Sicklerville in a prime retail and commercial development area</li> <li>▶ Within close proximity to Kennedy &amp; Virtua hospitals</li> <li>▶ Located within a high income residential area and surrounded by medical professional offices</li> <li>▶ Convenient access to Atlantic City Expressway, I-295 and Black Horse Pike</li> </ul>

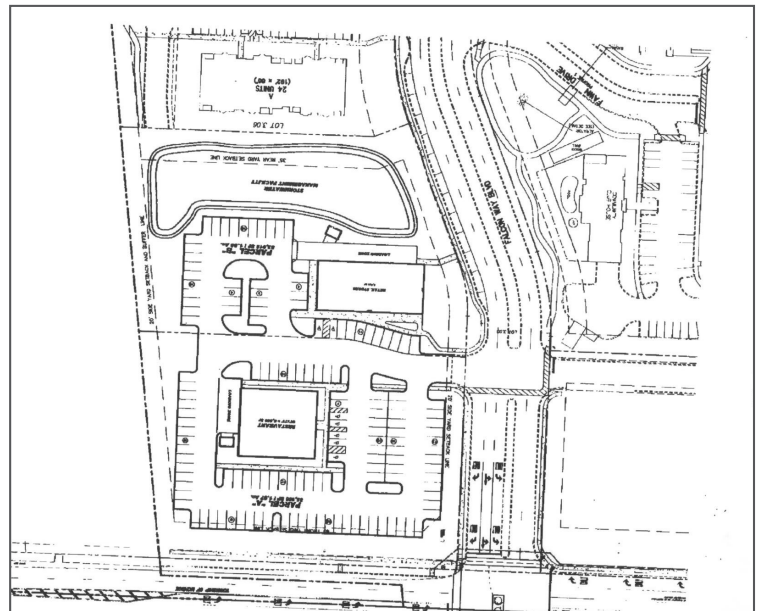
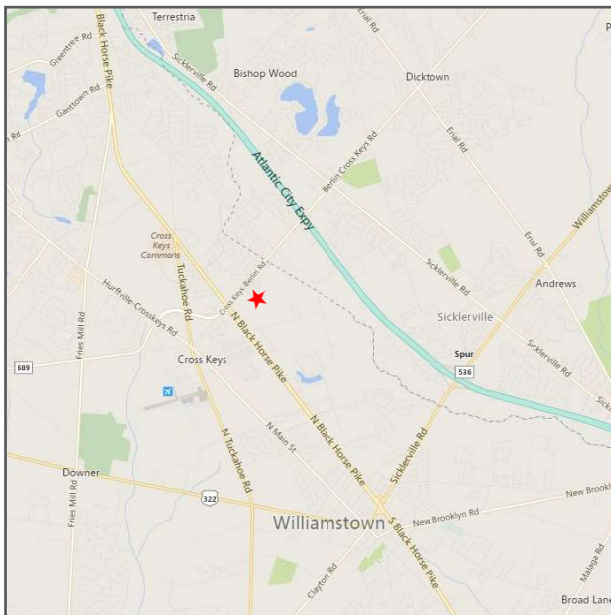
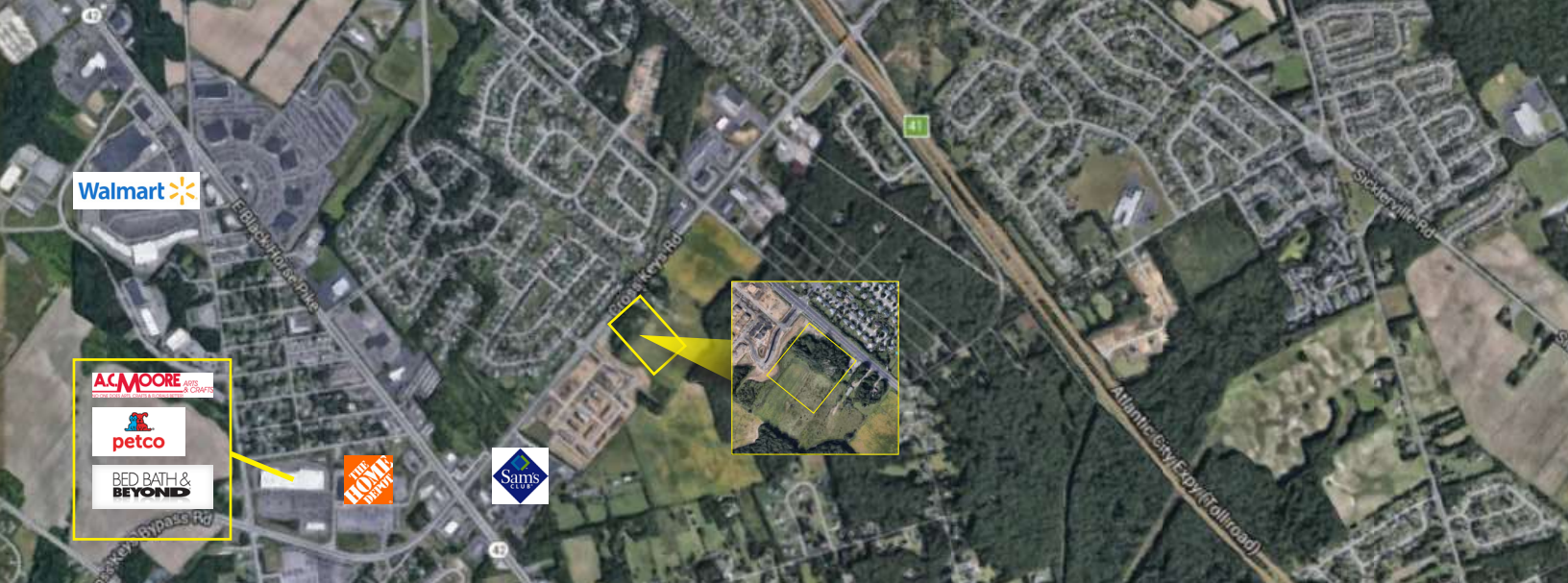
## Contact Us

Leor R. Hemo  
Executive Vice President  
D 856 857 6302  
[leor.hemo@wolfcre.com](mailto:leor.hemo@wolfcre.com)

Jason M. Wolf  
Principal  
D 856 857 6301  
[jason.wolf@wolfcre.com](mailto:jason.wolf@wolfcre.com)



# Building Successful Relationships



## DEMOGRAPHIC SUMMARY

	1 Mile	3 Miles	5 Miles
Population	6,270	59,517	139,679
Avg HH Income	\$96,778	\$87,924	\$89,613

## CONTACT Us

Leor R. Hemo, Executive Vice President  
 D 856 857 6337  
[leor.hemo@wolfcre.com](mailto:leor.hemo@wolfcre.com)

Jason M. Wolf, Principal  
 D 856 857 6301  
[jason.wolf@wolfcre.com](mailto:jason.wolf@wolfcre.com)

follow us:    



The foregoing information was furnished to us by sources which we deem to be reliable, but no warranty or representation is made as to the accuracy thereof. Subject to correction of errors, omissions, change of price, prior sale or withdrawal from market without notice.