



# OFFICE SPACE FOR LEASE

## CHERRY HILL OFFICE SPACE FOR LEASE 1949 MARLTON PIKE | CHERRY HILL | NJ



Building Features	
Location	1949 Marlton Pike Cherry Hill, NJ
Size/SF Available	+/- 914 sf (Second Floor)
Asking Lease Price	Call for information
Occupancy	Available for immediate occupancy
Signage	Suite signage available
Area Description	<ul style="list-style-type: none"> <li>▶ Located along Route 70 (Marlton Pike) in Cherry Hill's Central Business District with easy access to area shopping, hotels, and restaurants</li> <li>▶ Immediate access to I-295, providing for convenient North/South access</li> <li>▶ Within close proximity to all local health systems</li> </ul>
Property Description	<ul style="list-style-type: none"> <li>▶ Well located multi-tenanted medical office complex with on-site ownership and management</li> <li>▶ Join Advocare Pediatrics &amp; Paul Adler Family Dentistry</li> </ul>

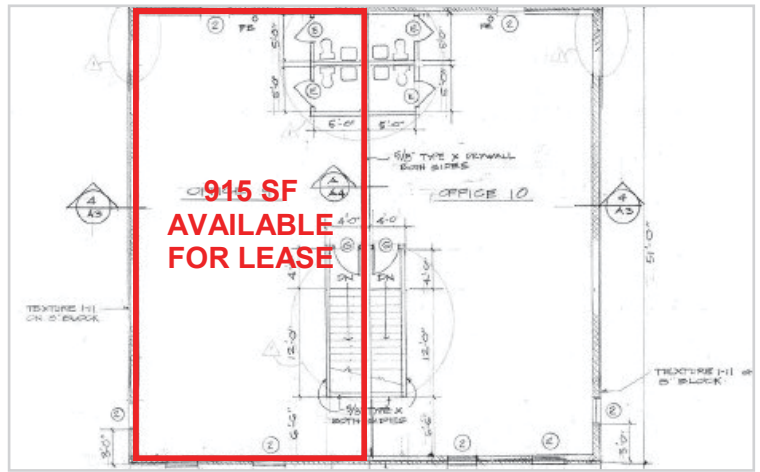
### Contact Us

Jason M. Wolf  
Managing Principal  
D 856 857 6301  
[jason.wolf@wolfcre.com](mailto:jason.wolf@wolfcre.com)

Leor R. Hemo  
Executive Vice President  
D 856 857 6302  
[leor.hemo@wolfcre.com](mailto:leor.hemo@wolfcre.com)



# Building Successful Relationships



## DEMOGRAPHIC SUMMARY

	1 Mile	3 Miles	5 Miles
Population	6,535	80,508	224,552
Household	2,504	31,324	88,748
Median HH Income	\$108,333	\$87,252	\$79,087
Avg HH Income	\$128,999	\$108,906	\$101,360

## CONTACT Us

Jason M. Wolf, Managing Principal  
856 857 6301  
[jason.wolf@wolfcre.com](mailto:jason.wolf@wolfcre.com)

Leor R. Hemo, Executive Vice President  
D 856 857 6302  
[leor.hemo@wolfcre.com](mailto:leor.hemo@wolfcre.com)

follow us:    



The foregoing information was furnished to us by sources which we deem to be reliable, but no warranty or representation is made as to the accuracy thereof. Subject to correction of errors, omissions, change of price, prior sale or withdrawal from market without notice.