

**MEDICAL/PROFESSIONAL OFFICE BUILDING & APPROVED PAD SITE**  
**326 ROUTE 73 SOUTH | VOORHEES | NJ**

 Includes  
 10,000 SF  
 Approved  
 Pad Site


## Contact Us

Christopher R. Henderson  
 Senior Associate  
 D 856 857 6337  
[chris.henderson@wolfcre.com](mailto:chris.henderson@wolfcre.com)

Jason M. Wolf  
 Principal  
 D 856 857 6301  
[jason.wolf@wolfcre.com](mailto:jason.wolf@wolfcre.com)



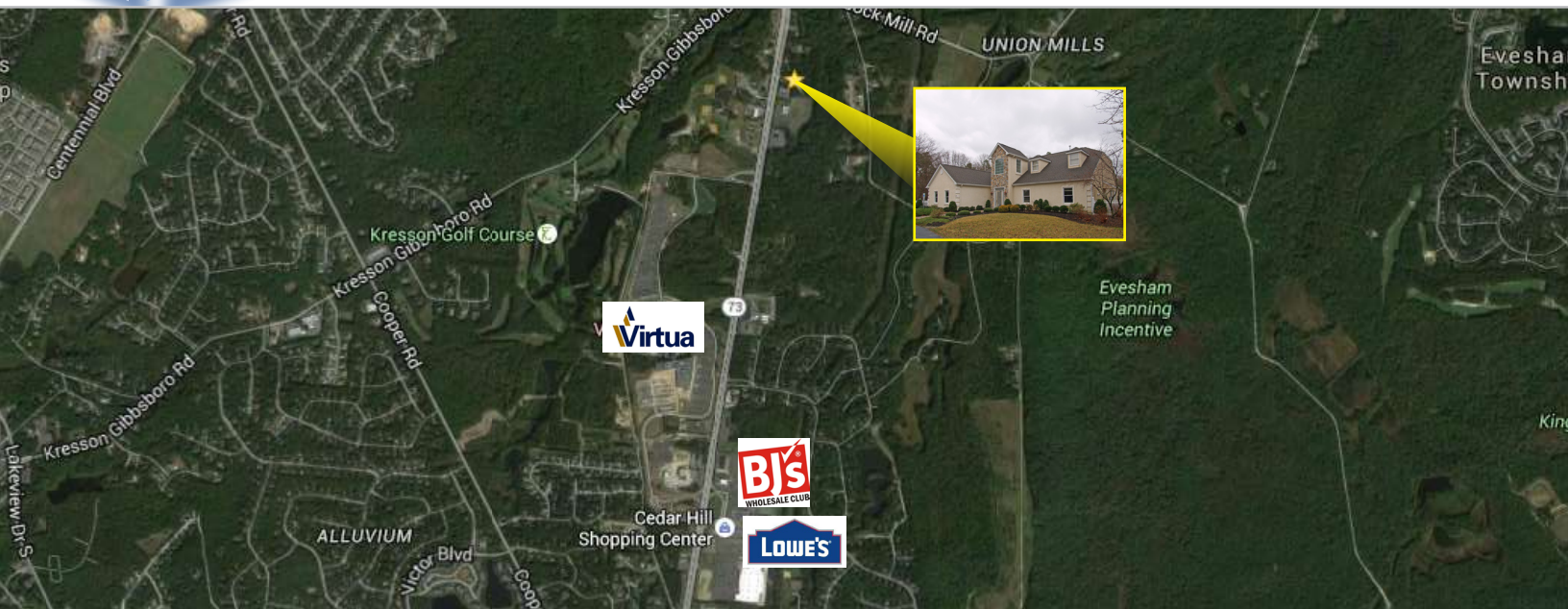
### Building Features

Location	326 Route 73 South Voorhees, NJ
Size/SF Available Acreage	+/- 6,862 sf +/- 2.56 acres
Asking Sale Price	\$1,750,000
Parking	35 Surface spaces
Occupancy	Available for immediate occupancy
Signage	Signage available on Route 73
Property/Area Description	<ul style="list-style-type: none"> <li>▶ Recently renovated 6,862 square foot medical/office building</li> <li>▶ Situated on +/-2.56 acres with 10,000sf approved pad site for future development</li> <li>▶ Ideal for a variety of medical and professional office uses</li> <li>▶ Monument signage fronting on the heavily traveled route 73</li> <li>▶ Immediate access to Virtua Hospital Voorhees Campus</li> <li>▶ Surrounded by healthcare &amp; professional users</li> <li>▶ Within close proximity to many retail stores, restaurants and health care practices</li> <li>▶ Convenient access to Route 70, I-295, New Jersey Turnpike and the Atlantic City Expressway</li> </ul>

 follow us:    



# Building Successful Relationships



## CONTACT Us

Christopher R. Henderson  
 D 856 857 6337  
[chris.henderson@wolfcre.com](mailto:chris.henderson@wolfcre.com)

Jason M. Wolf, Principal  
 D 856 857 6301  
[jason.wolf@wolfcre.com](mailto:jason.wolf@wolfcre.com)

follow us:    

## DEMOGRAPHIC SUMMARY

	1 Mile	3 Miles	5 Miles
Population	2,218	48,125	153,126
Household	751	17,754	58,171
Median HH Income	\$113,288	\$98,142	\$83,810
Avg HH Income	\$135,603	\$120,284	\$105,583
Traffic Count	83,644 ADV (Route 73)		



The foregoing information was furnished to us by sources which we deem to be reliable, but no warranty or representation is made as to the accuracy thereof. Subject to correction of errors, omissions, change of price, prior sale or withdrawal from market without notice.