



+/- 7,040 SF COMMERCIAL BUILDINGS SITUATED ON +/- 1.3 ACRES FOR SALE

3477 HADDONFIELD ROAD & 3450 SAINT MARTIN ROAD PENNSAUKEN | NJ



Building Features	
Location	3477 Haddonfield Road & 3450 St Martin Road Pennsauken, NJ
Size/SF Available	3477 Haddonfield: 4,200 SF building 3450 St Martin: 2,840 SF building
Lot Size	+/- 1.3 acres
Asking Sale Price	\$ 675,000
Parking	Abundant parking
Occupancy	Available with 30 days notice
Signage	Pylon signage along Haddonfield Road
Property/Area Description	<ul style="list-style-type: none"> ▶ Situated on +/-1.3 Acres ▶ 2 Buildings: 3477 Haddonfield Road & 3450 Saint Martin totalling 7,040 SF ▶ Available on 30 days notice ▶ Pylon signage along Haddonfield Road ▶ Minutes from Routes 38, 70, 73, I-295 and within close proximity to the Betsy Ross and Tacony Palmyra Bridges ▶ Great for a variety of uses. Property offers outdoor fenced and gated secure storage

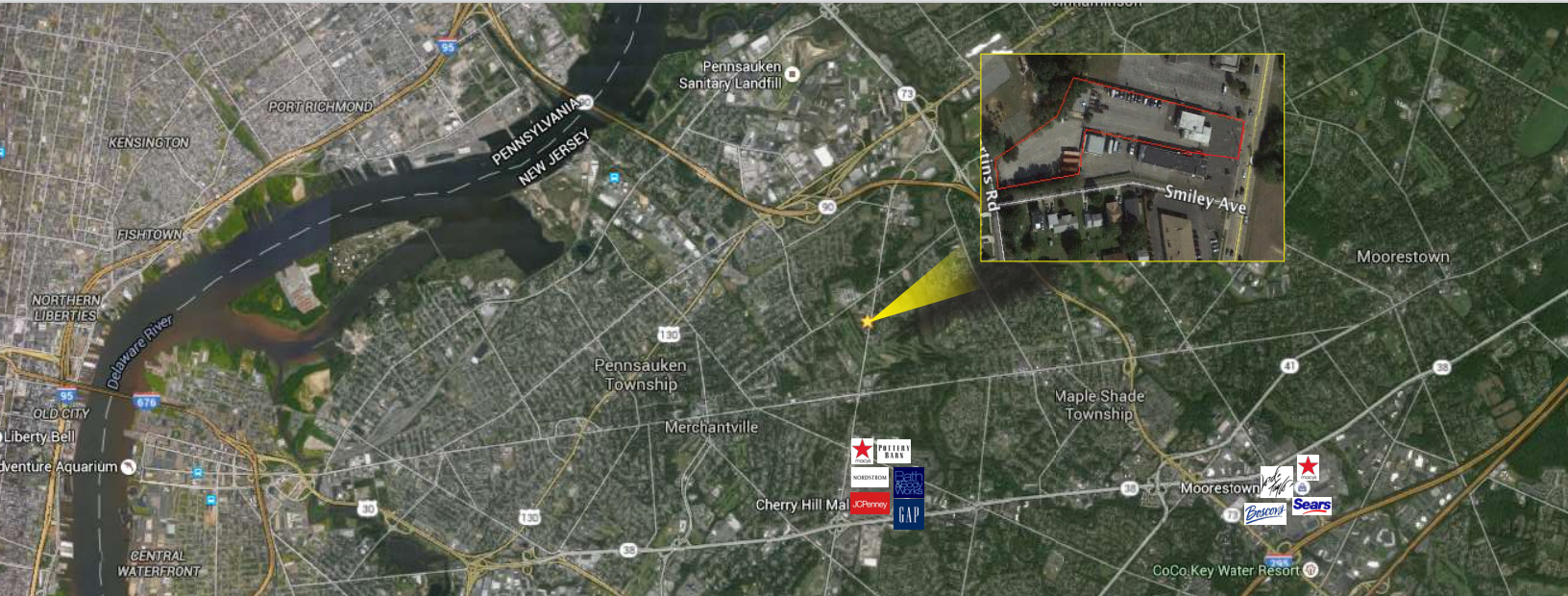
follow us:    

Wolf Commercial Real Estate
www.wolfcre.com

NJ OFFICE
951 Route 73 North | Suite D
Marlton, NJ 08053
P 856 857-6300 | F 856 283-3950

PA OFFICE
630 Freedom Business Center | 3rd Floor
King of Prussia, PA 19406
P 215 799 6900 | F 610 768 7701

Building Successful Relationships



DEMOGRAPHIC SUMMARY

	1 Mile	3 Miles	5 Miles
Population	6,682	94,238	268,126
Household	2,436	37,212	107,588
Median HH Income	\$78,474	\$74,054	\$69,113
Avg HH Income	\$94,240	\$95,895	\$87,718

CONTACT US

Leor R. Hemo
 Executive Vice President
 D 856 857 6302
 leor.hemo@wolfcre.com

Jason M. Wolf
 Managing Principal
 D 856 857 6301
 jason.wolf@wolfcre.com

follow us:    



The foregoing information was furnished to us by sources which we deem to be reliable, but no warranty or representation is made as to the accuracy thereof. Subject to correction of errors, omissions, change of price, prior sale or withdrawal from market without notice.