



3701 CHURCH ROAD | MOUNT LAUREL | NJ

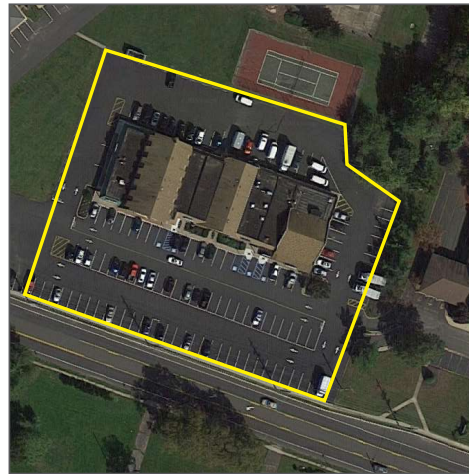
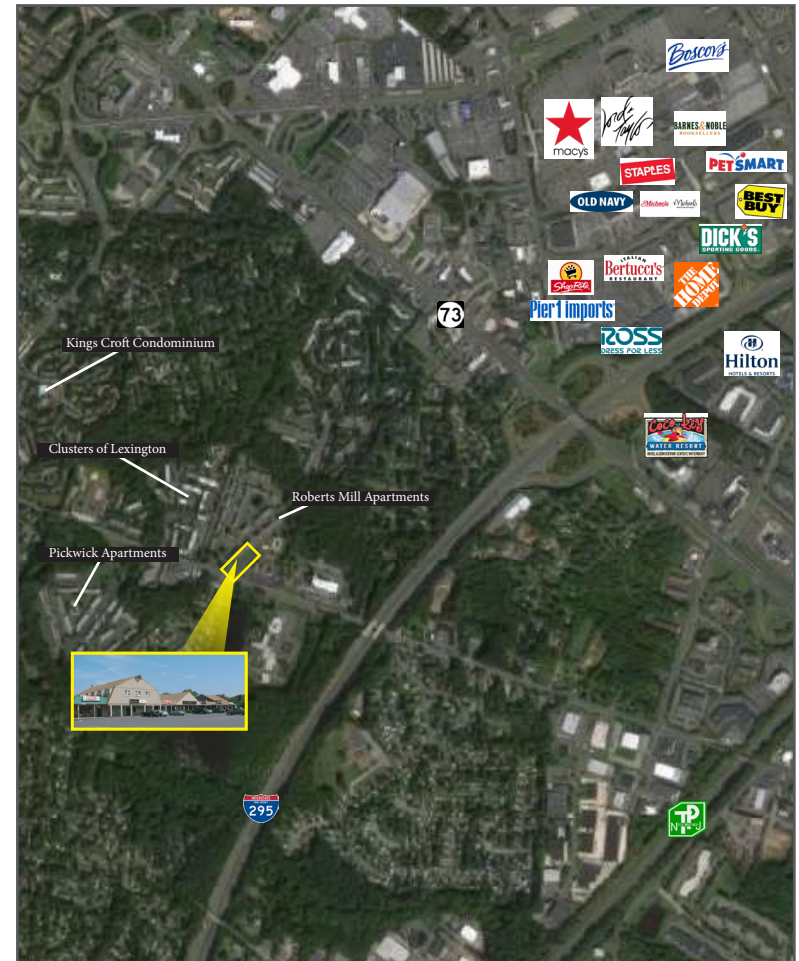
Wolf Commercial Real Estate

follow us:    

www.WolfCRE.com

Property Description

Location	Roberts Mill Plaza 3701 Church Road Mount Laurel, NJ	
Size/SF Available	Retail: 1,328 sf	Office: 824 sf & 1,580 sf
Asking Lease Price	Retail: \$17.00/sf Gross	Office: \$12.00/sf Gross
Parking	Abundant parking on site	
Occupancy	Available for immediate occupancy	
Signage	Monument, building and suite signage available	
Area/Property Description	<ul style="list-style-type: none"> ▶ Located at signalized intersection on Church Road ▶ Minutes from Routes 73, 38 and I-295 ▶ Surrounded by large apartment communities and homes ▶ Traffic count exceeding 20,000 VPD ▶ Public transportation on site ▶ Ideal location for restaurant, florist, wireless store, martial arts, tanning salon, yoga, ice cream parlor or medical/professional offices ▶ Owned and managed by Morgan Properties 	



Contact Us

Christopher R. Henderson, Vice President
chris.henderson@wolfcre.com
 856 857 6337

follow us:

The foregoing information was furnished to us by sources which we deem to be reliable, but no warranty or representation is made as to the accuracy thereof. Subject to correction of errors, omissions, change of price, prior sale or withdrawal from market without notice.