

SALE - DEVELOPMENT OPPORTUNITY

LOTS 326, 334 & 400 WYOMISSING BLVD | WYOMISSING | PA



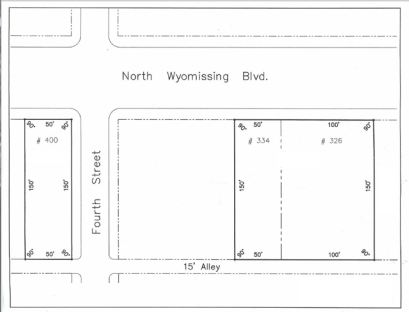
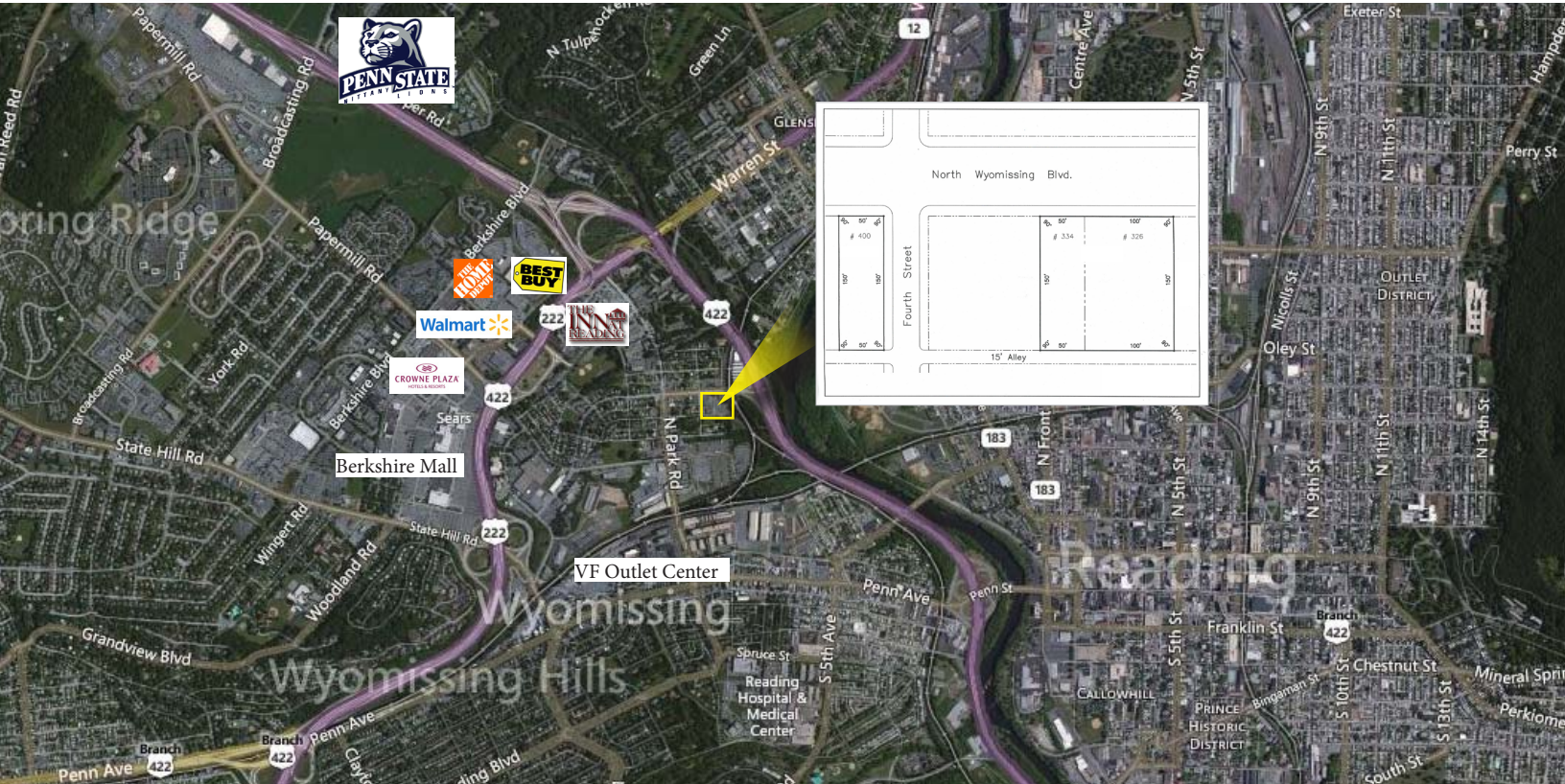
Contact Us

Lee E. Fein
 Senior Vice President
 M 215 206 5580
 D 215 799 6040
lee.fein@wolfcre.com

Property Features	
Location	Lots 326, 334 & 400 Wyomissing Blvd Wyomissing, PA
Lot Size:	.69 acres
Sale Price:	Call for more information
Property Description	<ul style="list-style-type: none"> ▶ Fully improved site ▶ Site is two tenths of a mile from PA Route 422 ramp ▶ Zoning - C-1 Neighborhood Commercial District




follow us:   

Building Successful Relationships



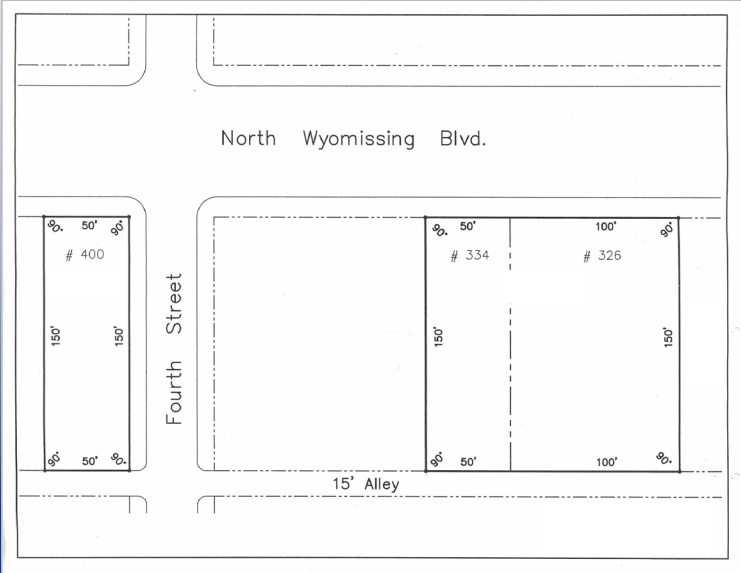
CONTACT US

Lee E. Fein, Senior Vice President
 M 215 206 5580
 D 215 799 6040
lee.fein@wolfcre.com

follow us:   

DEMOGRAPHIC SUMMARY

	1 Mile	3 Miles	5 Miles
Population	9,193	125,776	200,211
Household	3,742	46,073	74,778
Median HH Income	\$30,803	\$35,277	\$42,998
Avg HH Income	\$42,175	\$50,588	\$58,699



The foregoing information was furnished to us by sources which we deem to be reliable, but no warranty or representation is made as to the accuracy thereof. Subject to correction of errors, omissions, change of price, prior sale or withdrawal from market without notice.