



REDEVELOPMENT OPPORTUNITY

PRIME REDEVELOPMENT OPPORTUNITY 15 EAST GLOUCESTER PIKE | BARRINGTON | NJ



Contact Us

Scott D. Seligman
Director Business Development
D 856 857 6305
scott.seligman@wolfcre.com

Jason M. Wolf
Managing Principal
D 856 857 6301
jason.wolf@wolfcre.com

Building Features	
Location	15 East Gloucester Pike Barrington NJ
Size/SF Available	2,744 sf on .35 Acres
Asking Sale Price	\$400,000
Property Description	Property consists of a 2,744 sf house on .35 acres and is ideal for redevelopment.
Area Description	Located next to one of the busiest intersections in Barrington and across the street from Rite Aid. This ideal property is anchored between Haddon Heights and Runnemede Townships. This great location enjoys extensive visibility and is in walking distance to other shops and eateries. The two adjacent properties are also available for development assemblage.
Traffic Count	16,024 MPSI (Clements Bridge Road & Shreve Avenue)

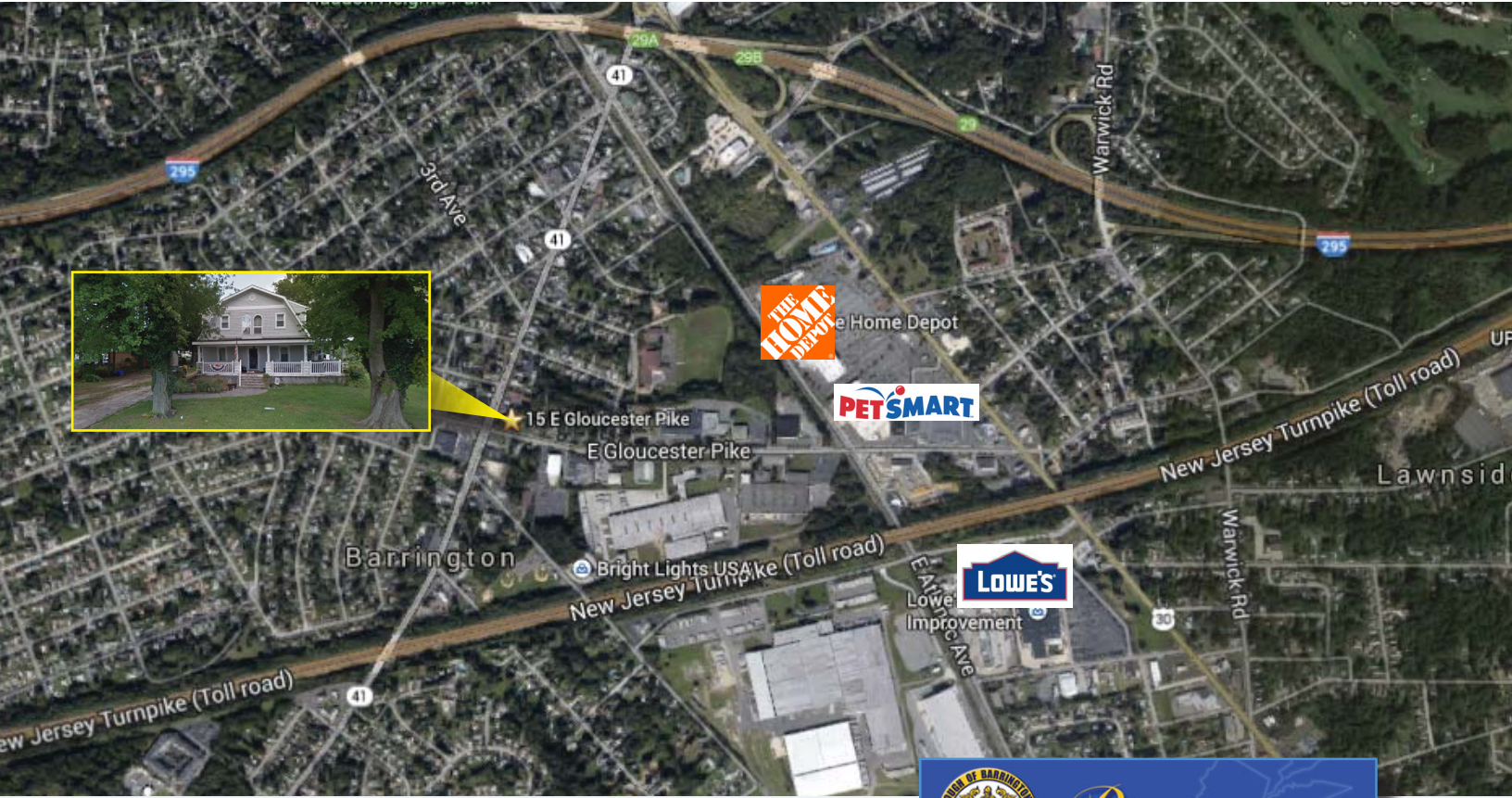
follow us:

Wolf Commercial Real Estate
www.wolfcre.com

NJ OFFICE
951 Route 73 North | Suite D
Marlton, NJ 08053
P 856 857-6300 | F 856 283-3950

PA OFFICE
630 Freedom Business Center | 3rd Floor
King of Prussia, PA 19406
P 215 799 6900 | F 610 768 7701

Building Successful Relationships



DEMOGRAPHIC SUMMARY

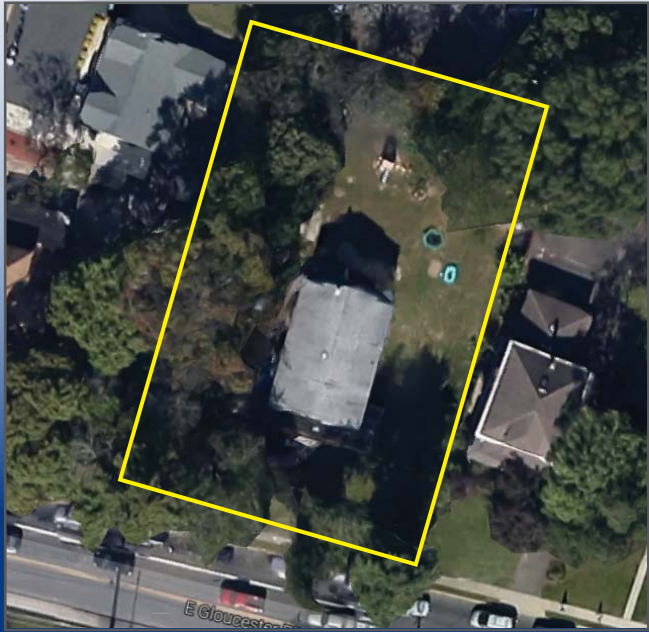
	1 Mile	3 Miles	5 Miles
Population	12,110	74,738	184,305
Household	4,695	27,948	72,684
Median HH Income	\$83,601	\$95,777	\$83,527
Avg HH Income	\$99,640	\$117,504	\$106,465

CONTACT Us

Scott D. Seligman
 Director Business Development
 D 856 857 6305
scott.seligman@wolfcre.com

Jason M. Wolf
 Managing Principal
 D 856 857 6301
jason.wolf@wolfcre.com

follow us:



The foregoing information was furnished to us by sources which we deem to be reliable, but no warranty or representation is made as to the accuracy thereof. Subject to correction of errors, omissions, change of price, prior sale or withdrawal from market without notice.