



1,775 - 2,722 SF Professional Office Suites for Lease

PROFESSIONAL/MEDICAL OFFICE SPACE 1035 NORTH BLACK HORSE PIKE | WILLIAMSTOWN | NJ



Contact Us

Scott D. Seligman
Director Business Development

D 856 857 6305
scott.seligman@wolfcre.com

Jason M. Wolf
Managing Principal

D 856 857 6301
jason.wolf@wolfcre.com

Building Features

Location	1035 North Black Horse Pike Williamstown, NJ
Size/SF Available	Unit 7 - 1,775 sf Unit 8 - 2,722 sf
Asking Lease Rate	\$15.00/sf Gross plus utilities
Parking	6.75/1000 sf
Occupancy	Available for immediate occupancy
Signage	Monument sign directory at entrance to office complex and suite signage
Area Description	Newly constructed professional building in growing Williamstown. Ideal location for medical or professional user. Convenient access to Kennedy Memorial, Route 42 & AC Expressway.
Traffic Count	25,784 AVD (N. Black Horse Pk & Lake Ave)
Population 3 Mile Radius	52,329

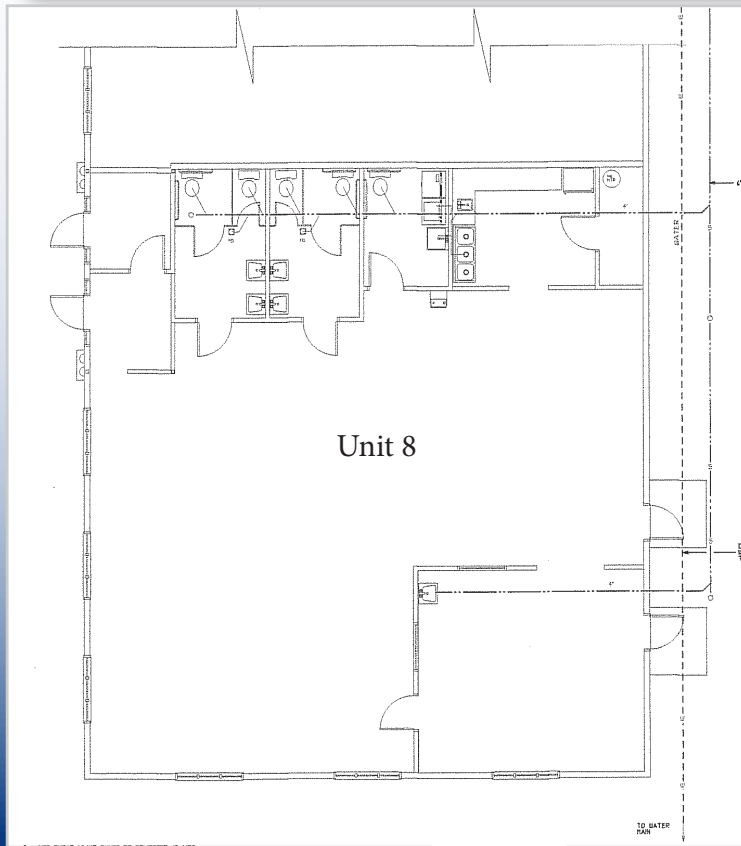
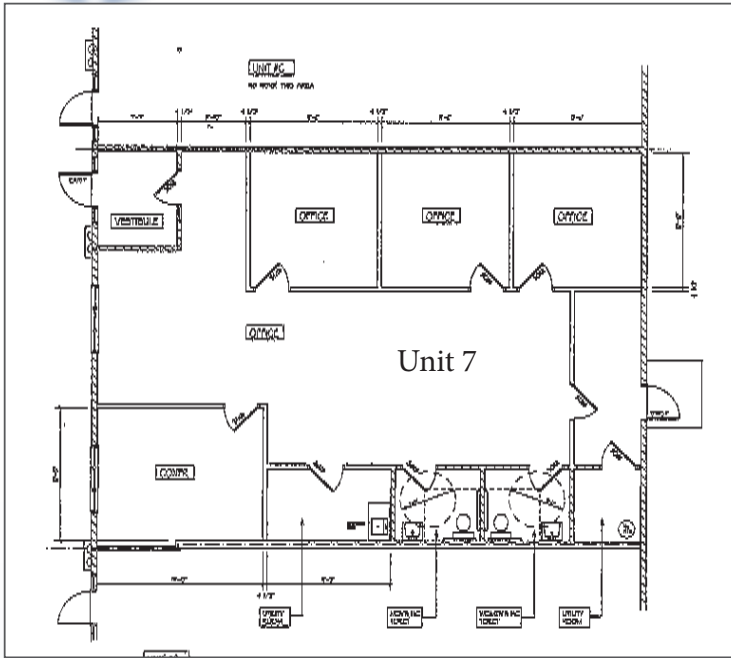
follow us:    

Wolf Commercial Real Estate
www.wolfcre.com

NJ OFFICE
951 Route 73 North | Suite D
Marlton, NJ 08053
P 856 857-6300 | F 856 283-3950

PA OFFICE
630 Freedom Business Center | 3rd Floor
King of Prussia, PA 19406
P 215 799 6900 | F 610 768 7701

Building Successful Relationships



Contact Us

Scott D. Seligman
Director Business Development

D 856 857 6305
scott.seligman@wolfcre.com

Jason M. Wolf
Managing Principal

D 856 857 6301
jason.wolf@wolfcre.com

Wolf Commercial Real Estate, LLC
951 Route 73 North
Suite D
Marlton, NJ 08053
P 856 857 6300 | F 856 283 3950
www.wolfcre.com



follow us:    



The foregoing information was furnished to us by sources which we deem to be reliable, but no warranty or representation is made as to the accuracy thereof. Subject to correction of errors, omissions, change of price, prior sale or withdrawal from market without notice.