

SALE - DEVELOPMENT OPPORTUNITY

1047 N PARK ROAD | WYOMISSING | PA



Contact Us

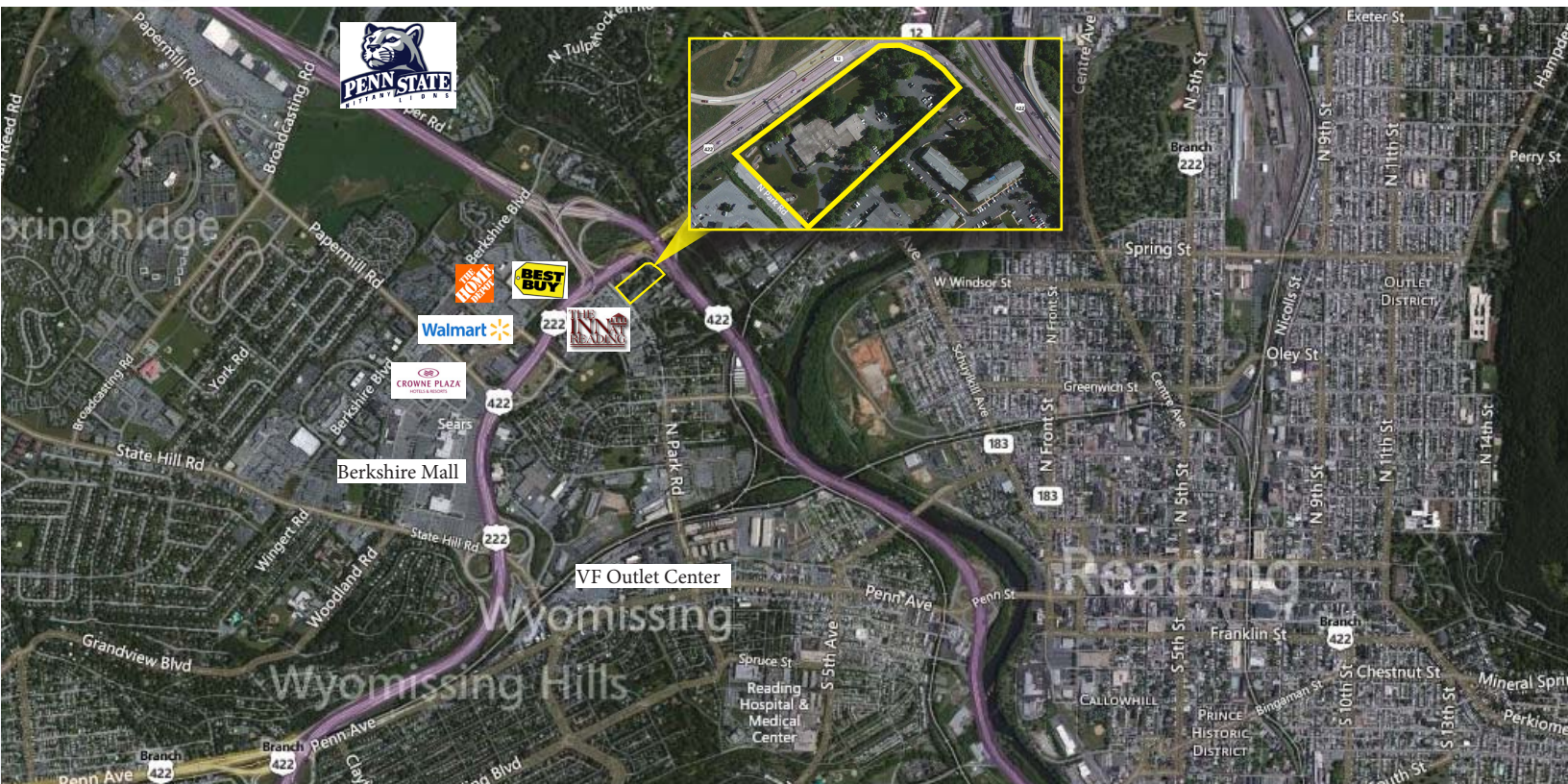
Lee E. Fein
 Senior Vice President
 M 215 206 5580
 D 215 799 6040
lee.fein@wolfcre.com

Property Features

Location	1047 N Park Road Wyomissing, PA Parcel Number: 96-4397-12-85-9166
Lot Size:	5.49 acres
Building Size	+/- 43,000 sf
Additional Amenities	<ul style="list-style-type: none"> ▶ Frontage on both the Warren Street & West Shore By-Passes with easy access to site ▶ Great highway exposure ▶ Zoning - C-2 Retail Commercial District ▶ Call for more details

follow us:   

Building Successful Relationships



CONTACT US

Lee E. Fein, Senior Vice President
 M 215 206 5580
 D 215 799 6040
lee.fein@wolfcre.com

follow us: [f](#) [t](#) [in](#)

DEMOGRAPHIC SUMMARY

	1 Mile	3 Miles	5 Miles
Population	9,193	125,776	200,211
Household	3,742	46,073	74,778
Median HH Income	\$30,803	\$35,277	\$42,998
Avg HH Income	\$42,175	\$50,588	\$58,699



The foregoing information was furnished to us by sources which we deem to be reliable, but no warranty or representation is made as to the accuracy thereof. Subject to correction of errors, omissions, change of price, prior sale or withdrawal from market without notice.