

## PREMIER PROFESSIONAL & MEDICAL OFFICE SPACE

### 94 BRICK ROAD | MARLTON | NJ



### Contact Us

Leor R. Hemo  
 Executive Vice President  
 D 856 857 6302  
[leor.hemo@wolfcre.com](mailto:leor.hemo@wolfcre.com)

Christopher R. Henderson  
 Senior Associate  
 D 856 857 6337  
[chris.henderson@wolfcre.com](mailto:chris.henderson@wolfcre.com)

#### Building Features

Location	West Jersey Office Plaza 94 Brick Road Marlton, NJ
Size/SF Available	1,500 - 38,785 sf (Divisible)
Lease Price	\$17.00/sf Gross plus electric
Parking	4.00/1,000 sf
Occupancy	Available for immediate occupancy
Signage	Building signage available
Area Description	<ul style="list-style-type: none"> <li>▶ Locally owned and managed</li> <li>▶ Easily accessible to Routes 73, 70, I-295, New Jersey Turnpike and the Atlantic City Expressway</li> <li>▶ Surrounded by various restaurants, retailers, including the Promenade at Sagemore</li> </ul>
Property Description	<ul style="list-style-type: none"> <li>▶ The extremely well maintained building is conveniently located in the heart of one of the main commerce centers in Southern New Jersey.</li> <li>▶ Direct access to hospital and mutiplex rehabilitation facility.</li> <li>▶ Located south of Rt 70 at the intersection of Rt 73 and Brick Rd on the grounds of Virtua West Jersey Health System Marlton Campus, Marlton Rehabilitation Hospital and Weisman Children's Rehabilitation Hospital</li> <li>▶ Excellent window line around entire building</li> </ul>

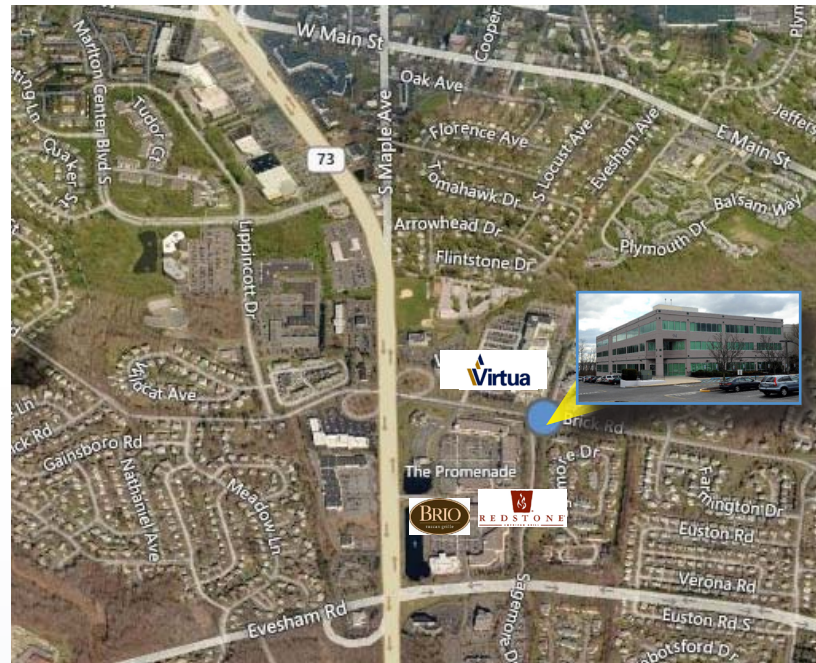
follow us:    

Wolf Commercial Real Estate  
[www.wolfcre.com](http://www.wolfcre.com)

NJ OFFICE  
 951 Route 73 North | Suite D  
 Marlton, NJ 08053  
 P 856 857-6300 | F 856 283-3950

PA OFFICE  
 630 Freedom Business Center | 3rd Floor  
 King of Prussia, PA 19406  
 P 215 799 6900 | F 610 768 7701

# Building Successful Relationships



## DEMOGRAPHIC SUMMARY

	1 Mile	3 Miles	5 Miles
Population	9,936	67,075	151,564
Household	3,727	25,406	58,366
Median HH Income	\$82,049	\$92,598	\$93,131
Avg HH Income	\$97,099	\$108,808	\$110,323
Traffic Count	56,818 (State Rte 73 & Brick Road)		

## CONTACT Us

Leor R. Hemo, Executive Vice President  
 D 856 857 6302  
[leor.hemo@wolfcre.com](mailto:leor.hemo@wolfcre.com)

Christopher R. Henderson, Senior Associate  
 D 856 857 6337  
[chris.henderson@wolfcre.com](mailto:chris.henderson@wolfcre.com)

follow us:    



The foregoing information was furnished to us by sources which we deem to be reliable, but no warranty or representation is made as to the accuracy thereof. Subject to correction of errors, omissions, change of price, prior sale or withdrawal from market without notice.