



13,442 SF FOR LEASE

PREMIER SINGLE STORY OFFICE SPACE AVAILABLE
701 C ROUTE 73 SOUTH | MARLTON | NJ



Contact Us

Christina Del Duca
Vice President
D 856 857 6304
christina.delduca@wolfcre.com

Leor R. Hemo
Executive Vice President
D 856 857 6302
leor.hemo@wolfcre.com



Building Features

Location	Marlton Executive Park 701 C Route 73 South Marlton, NJ
Size/SF Available	13,442 sf
Asking Lease Price	\$10.00/sf NNN
Parking	8.00/1,000 sf
Occupancy	Available January 2016
Signage	Lobby directory and suite signage available

Property/Area Description

- ▶ Locally owned and managed
- ▶ Beautiful office park
- ▶ Abundant parking
- ▶ Easily accessible to Routes 73, 70, I-295, New Jersey Turnpike and the Atlantic City Expressway
- ▶ Surrounded by various restaurants, retailers, including the Promenade at Sagamore
- ▶ Close proximity to Virtua Health System

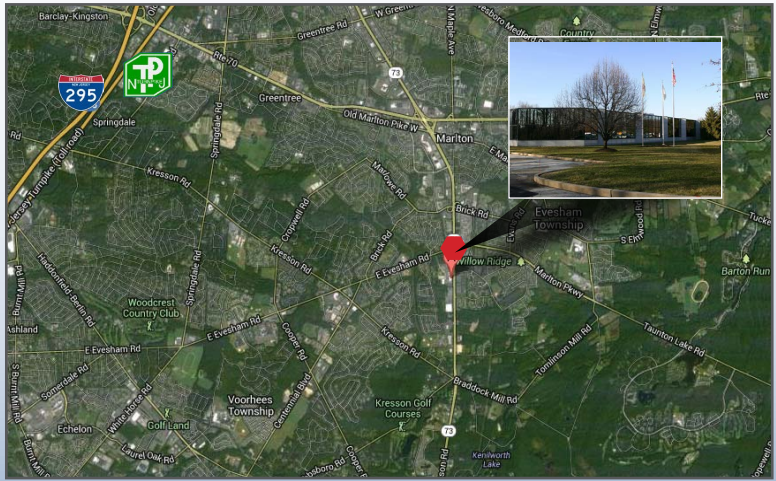
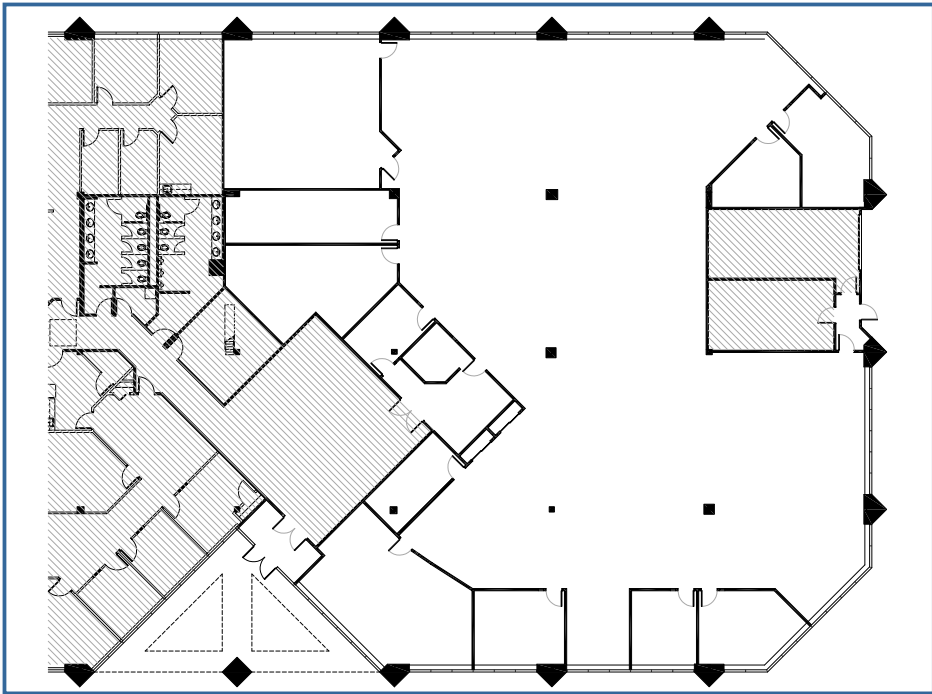
follow us:

Wolf Commercial Real Estate, LLC
www.wolfcre.com

NJ OFFICE
951 Route 73 North | Suite D
Marlton, NJ 08053
P 856 857-6300 | F 856 283-3950

PA OFFICE
630 Freedom Business Center | 3rd Floor
King of Prussia, PA 19406
P 215 799 6900 | F 610 768 7701

Building Successful Relationships



DEMOGRAPHIC SUMMARY

	1 Mile	3 Miles	5 Miles
Population	8,961	62,814	158,922
Household	3,328	23,608	61,337
Median HH Income	\$91,537	\$92,251	\$83,212
Avg HH Income	\$109,195	\$113,513	\$105,636
Traffic Count	40,237 (Route 73 & Commonwealth Dr)		

CONTACT Us

Christina Del Duca Vice President D 856 857 6304 christina.delduca@wolfcre.com	Leor R. Hemo Executive Vice President D 856 857 6302 leor.hemo@wolfcre.com
---	---

follow us:   



The foregoing information was furnished to us by sources which we deem to be reliable, but no warranty or representation is made as to the accuracy thereof. Subject to correction of errors, omissions, change of price, prior sale or withdrawal from market without notice.