



+/- 7,650 SF END-CAP FLEX UNIT FOR SALE

END-CAP FLEX UNIT FOR SALE 600 DEER ROAD | CHERRY HILL | NJ



Contact Us

Scott D. Seligman
Director of Business Development
D 856 857 6305
scott.seligman@wolfcre.com

Jason M. Wolf
Principal
D 856 857 6301
jason.wolf@wolfcre.com

Building Features

Location	Deer Tree Professional Center 600 Deer Road Cherry Hill, NJ
Size/SF Available	+/- 6,450 sf (office) +/- 1,200 sf (warehouse)
Sale Price	\$650,000
Parking	Ample parking
Occupancy	Available for immediate occupancy
Signage	Suite entrance signage
Area Description	Deer Tree Professional Center consists of office/warehouse condominiums, located on Deer Road with excellent access to all major arteries including Routes 70, I-295, 73, 38 and the NJ Turnpike.
Property description	Two story +/- 6,450 sf office with complimenting +/- 1,200 warehouse. Warehouse area consists of 1 drive-in bay with a ceiling height of 10'9" and ample parking.

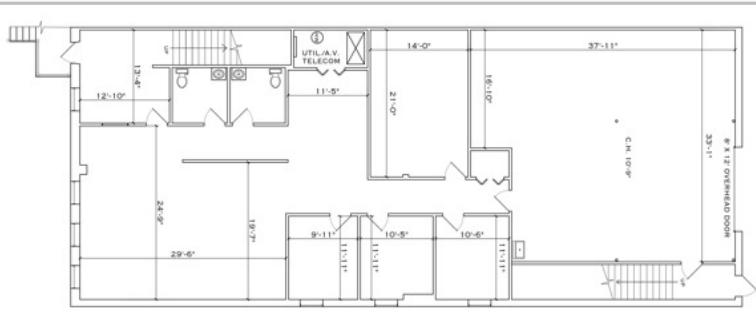
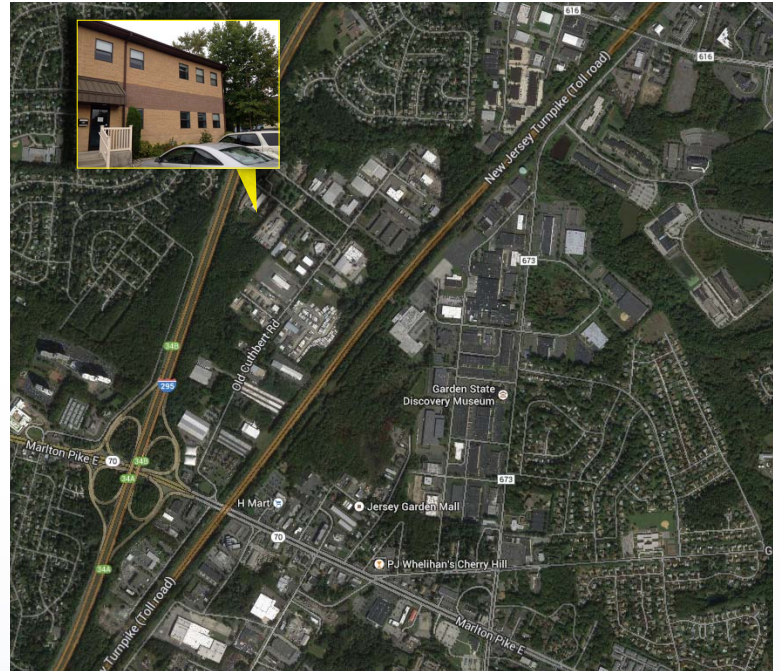
follow us:

Wolf Commercial Real Estate
www.wolfcre.com

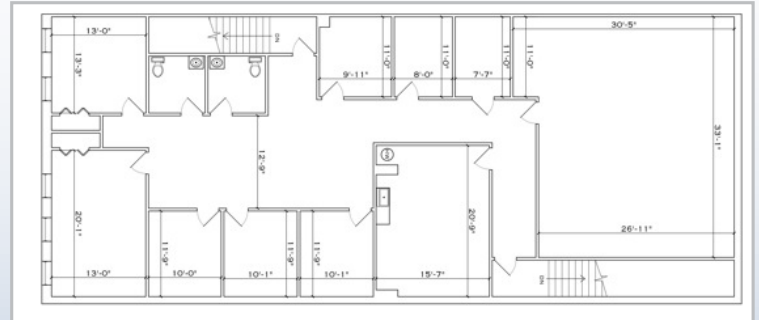
NJ OFFICE
951 Route 73 North | Suite D
Marlton, NJ 08053
P 856 857-6300 | F 856 283-3950

PA OFFICE
630 Freedom Business Center | 3rd Floor
King of Prussia, PA 19406
P 215 799 6900 | F 610 768 7701

Building Successful Relationships



1st Floor



2nd Floor

DEMOGRAPHIC SUMMARY

	1 Mile	3 Miles	5 Miles
Population	8,709	83,765	237,469
Household	3,499	33,537	93,072
Median HH Income	\$70,763	\$75,502	\$79,481
Avg HH Income	\$91,788	\$96,253	\$102,075
Traffic Count	124,711 (I-295 & Chapel Avenue)		

CONTACT US

Scott D. Seligman, Director of Business Development
 D 856 857 6305
scott.seligman@wolfcre.com

Jason M. Wolf, Principal
 D 856 857 6301
jason.wolf@wolfcre.com

follow us:   



The foregoing information was furnished to us by sources which we deem to be reliable, but no warranty or representation is made as to the accuracy thereof. Subject to correction of errors, omissions, change of price, prior sale or withdrawal from market without notice.