



**+/- 61,694 SF OFFICE BUILDING FOR SALE/LEASE**

**ASKING SALE PRICE \$4.6M OR \$75.00/SF**



**COLWICK BUSINESS CENTER | 55 HADDONFIELD ROAD | CHERRY HILL | NJ**

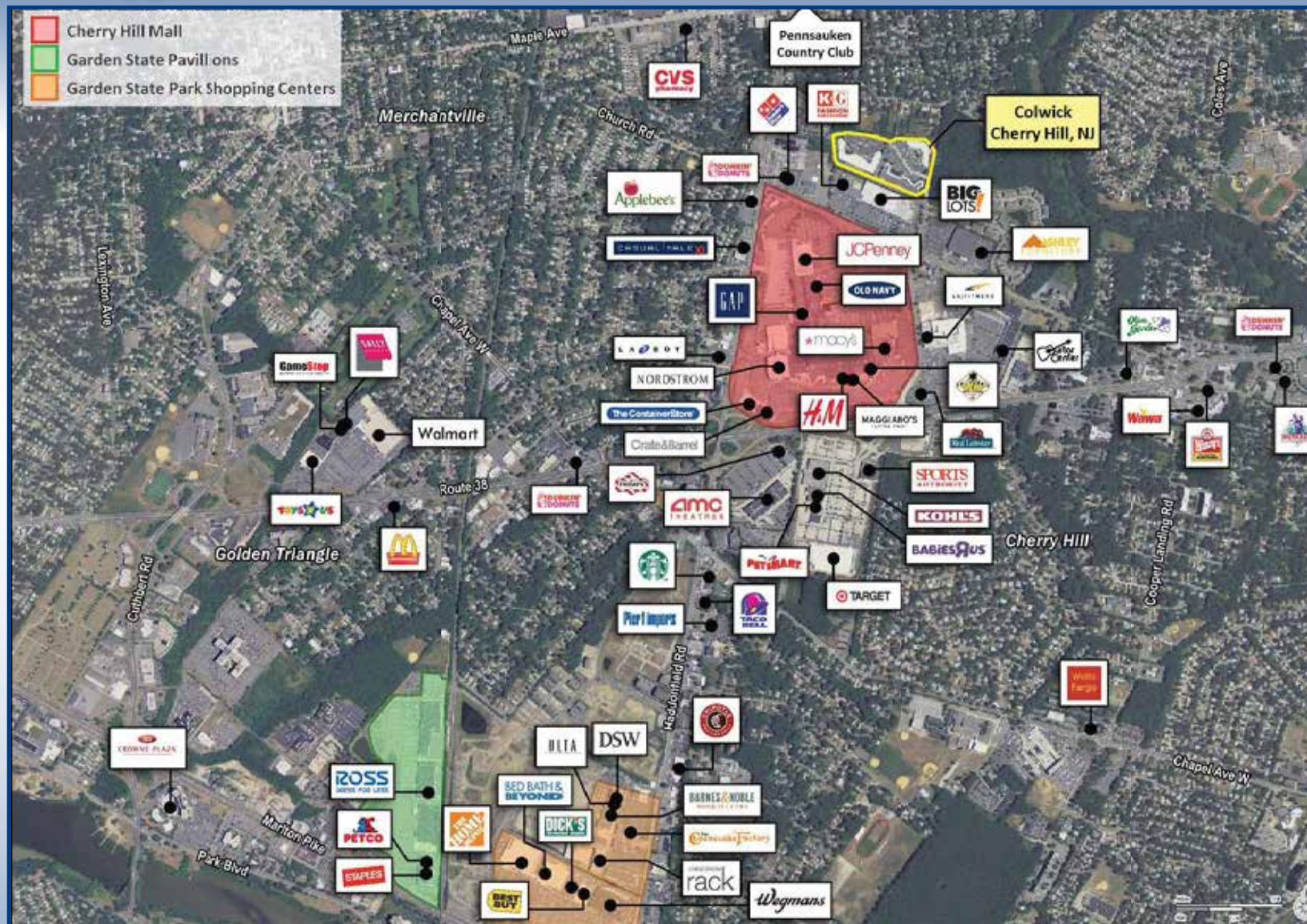
Wolf Commercial Real Estate  
[www.wolfcre.com](http://www.wolfcre.com)

NJ OFFICE  
951 Route 73 North | Suite D  
Marlton, NJ 08053  
P 856 857-6300 | F 856 283-3950

PA OFFICE  
630 Freedom Business Center | 3rd Floor  
King of Prussia, PA 19406  
P 215 799 6900 | F 610 768 7701

follow us:    

# 55 HADDONFIELD ROAD



## Building Features

Location	55 Haddonfield Road, Cherry Hill, NJ	
Size/SF Available	+/- 61,694 sf	
Asking Sale Price	\$4,600,000 (\$75.00/SF)	
Asking Lease Price	\$9.50 - \$12.00/sf NNN	
Parking	4.8/1,000 sf	
Occupancy	Available for immediate occupancy	
Signage	Monument tenant directory and suite signage available	
Property/Area Description	<ul style="list-style-type: none"> <li>Single-story building with no loss factor and direct, private 24/7 access</li> <li>Efficient layout with open bullpen areas and individual offices</li> <li>Daycare center located within the park</li> <li>Separate tax parcel from 53 &amp; 57 Haddonfield</li> <li>Located in the business district of Cherry Hill, NJ at the intersection of Haddonfield and Church Road providing for easy access to Route 38, Route 70, 73, I-295 with convenient access to Philadelphia via the Benjamin Franklin Bridge and Betsy Ross Bridge</li> <li>Direct NJ Transit (ROUTE 404) bus service within the business park</li> </ul>	

## Contact Us

Jason M. Wolf  
 Managing Principal  
 D 856 857 6301  
[jason.wolf@wolfcre.com](mailto:jason.wolf@wolfcre.com)

Leor R. Hemo  
 Executive Vice President  
 D 856 857 6302  
[leor.hemo@wolfcre.com](mailto:leor.hemo@wolfcre.com)

follow us:    



The foregoing information was furnished to us by sources which we deem to be reliable, but no warranty or representation is made as to the accuracy thereof. Subject to correction of errors, omissions, change of price, prior sale or withdrawal from market without notice.