

GROVE OFFICE PLAZA | 515 GROVE STREET | HADDON HEIGHTS | NJ

**6 MONTHS
FREE
RENT***


Contact Us

Jason M. Wolf
Principal

D 856 857 6301

jason.wolf@wolfcre.com

Building Features

Location	Grove Office Plaza 515 Grove Street Haddon Heights, NJ
Size/SF Available	1st Floor: 2,800 sf 3rd Floor: 1,050 sf 3rd Floor: 4,670 sf
Asking Lease Rate	\$15.50/sf gross plus utilities and janitorial service
Parking	4/1000 sf
Occupancy	Available for immediate occupancy
Signage	Monument/tenant directory at intersection of Route 30 and Grove Street.
Area/Property Description	Affordable mid-rise office building with suites available for immediate possession. Located immediately off Exit 29 of I-295 providing convenient North/South access. Public transportation available along Route 30 (White Horse Pike).
Traffic Count	33,170 ADV (White Horse Pike)
Population	118,444 (3 miles)

*6 MONTHS FREE RENT WITH A MINIMUM 5 YEAR LEASE

follow us:    

Building Successful Relationships

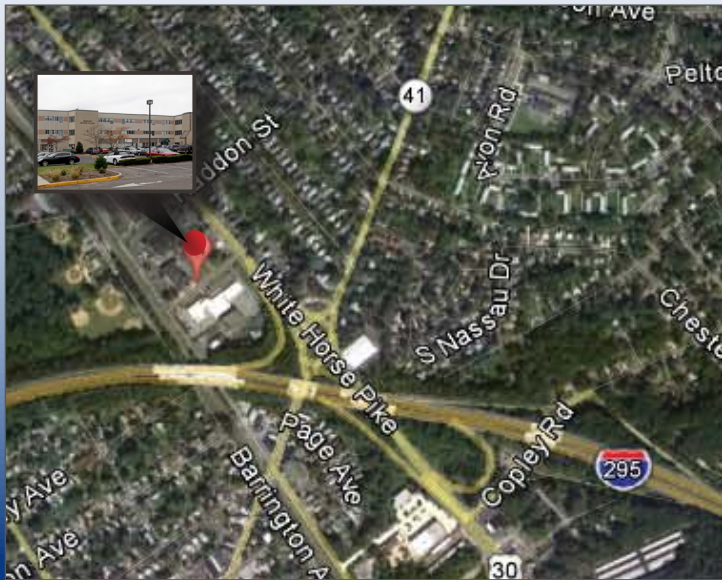


Contact Us

Jason M. Wolf
Managing Principal

D 856 857 6301
jason.wolf@wolfcre.com

Wolf Commercial Real Estate, LLC
951 Route 73 North
Suite D
Marlton, NJ 08053
P 856 857 6300 | F 856 283 3950
www.wolfcre.com



DEMOGRAPHIC SUMMARY

	1 Mile	3 Miles	5 Miles
Population	13,879	118,444	302,911
Household	5,513	47,867	118,392
Median HH Income	\$68,781	\$61,208	\$56,479
Avg HH Income	\$90,274	\$79,958	\$76,006

follow us:    



The foregoing information was furnished to us by sources which we deem to be reliable, but no warranty or representation is made as to the accuracy thereof. Subject to correction of errors, omissions, change of price, prior sale or withdrawal from market without notice.