



OWNER OCCUPANT/INVESTOR OPPORTUNITY



411 EAST ROUTE 70 | CHERRY HILL | NJ

Wolf Commercial Real Estate

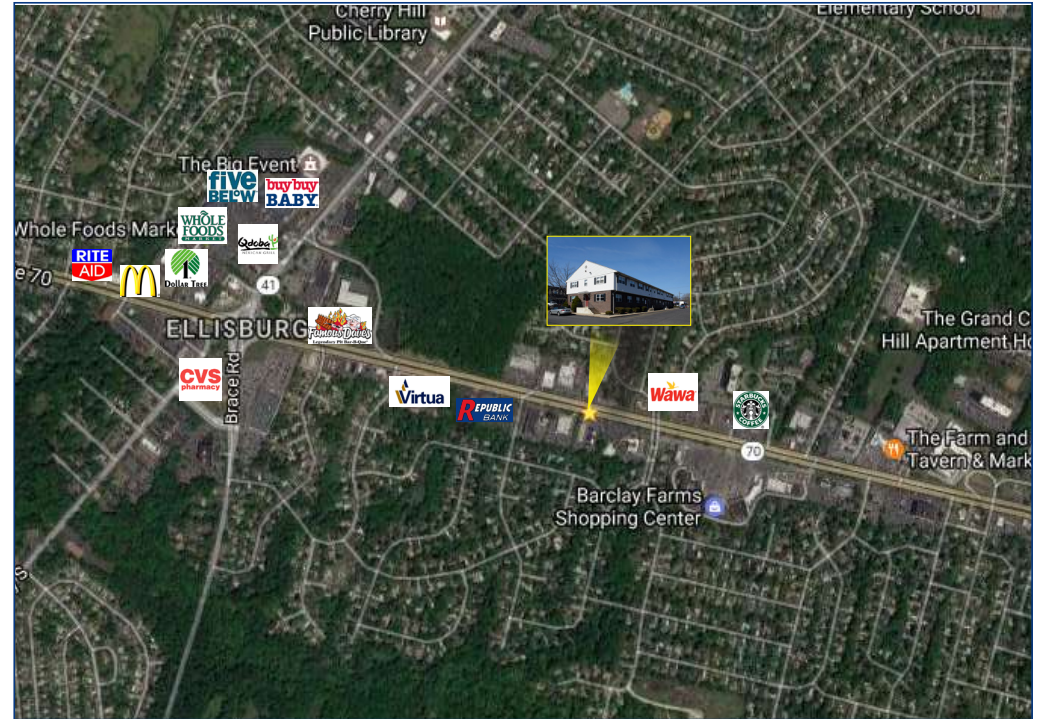
follow us:    

www.WolfCRE.com

Property Description

Location	411 East Route 70 Cherry Hill, NJ
Size/SF Available	+/- 10,000 SF Lease: Suite 200: 1,524 sf
Sale Price	\$1,200,000
Lease Price	\$16.50/sf Full Service (Suite 200)
Parking	Ample parking
Occupancy	Available for immediate occupancy
Signage	Monument directory signage on Route 70

- Property / Area Description**
- ▶ Suite has its own HVAC unit and thermostat control
 - ▶ Separate bathroom located in suite
 - ▶ New windows, alarm system and parking lot which was recently repaved
 - ▶ LED lighted directory sign on Route 70
 - ▶ Other tenants include several law firms and an orthodontist
 - ▶ Within close proximity to I-295 providing for convenient North/South access. Surrounded by retail, restaurants, banks including Ellisburg Shopping Center and Ponzio's Diner.



Investment Information

LONG TERM POSITIVE CASH FLOW

- ▶ Current NOI: +/- \$65,000

PROFESSIONAL TENANT MIX:

- ▶ Legal and healthcare
- ▶ Historically high occupancy: 85 - 100%

Contact Us

Jason M. Wolf
Managing Principal
856 857 6301
jason.wolf@wolfcre.com

John T. Mozzillo
Senior Associate/Director of Investment Sales
856 857 6304
john.mozzillo@wolfcre.com

follow us:    

The foregoing information was furnished to us by sources which we deem to be reliable, but no warranty or representation is made as to the accuracy thereof. Subject to correction of errors, omissions, change of price, prior sale or withdrawal from market without notice.