



+/- 1,524 SF PROFESSIONAL OFFICE SUITE FOR LEASE

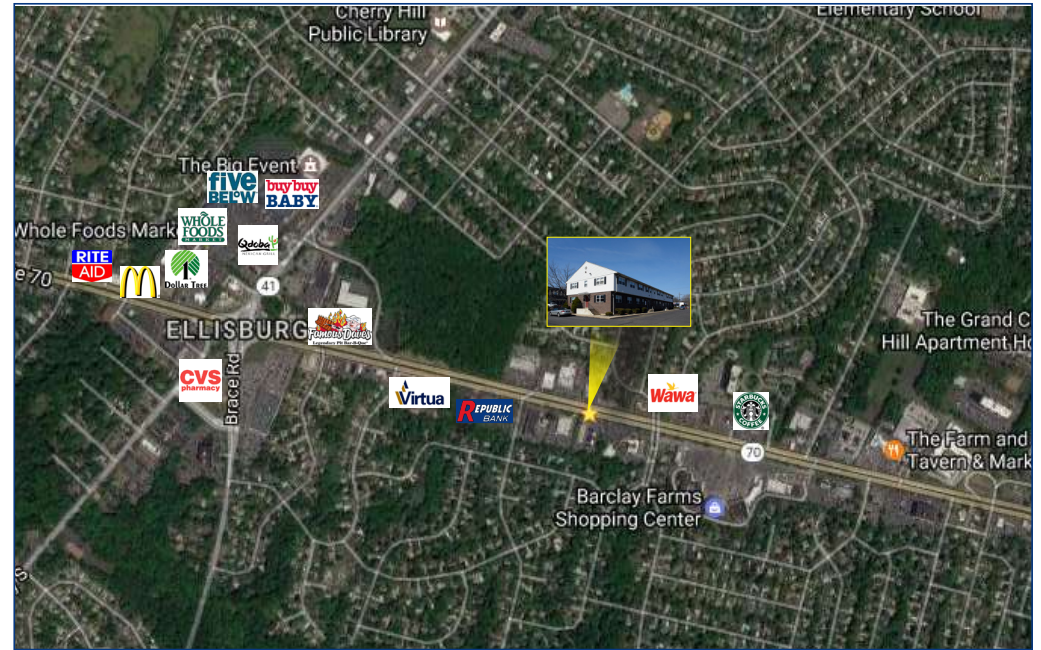
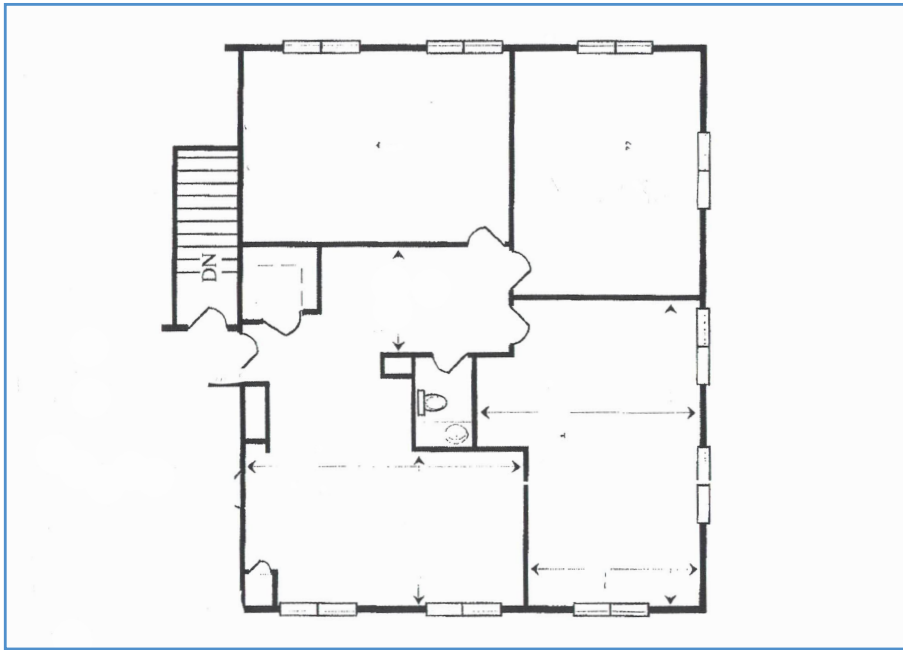


411 EAST ROUTE 70 | CHERRY HILL | NJ

Wolf Commercial Real Estate

follow us:    

www.WolfCRE.com



Property Description

Location	411 East Route 70 Cherry Hill, NJ
Size/SF Available	Suite 200: 1,524 sf
Asking Lease Price	\$16.50/sf Full Service
Parking	Ample parking
Occupancy	Available for immediate occupancy
Signage	Monument directory signage on Route 70
Property Description	<ul style="list-style-type: none"> ▶ Suite has its own HVAC unit and thermostat control ▶ Separate bathroom located in suite ▶ New windows, alarm system and parking lot which was recently repaved ▶ LED lighted directory sign on Route 70 ▶ Other tenants include several law firms and an orthodontist

Area Description

Within close proximity to I-295 providing for convenient North/South access. Surrounded by retail, restaurants, banks including Ellisburg Shopping Center and Ponzio's Diner.

Contact Us

Jason M. Wolf
Managing Principal
856 857 6301

jason.wolf@wolfcre.com

Leor R. Hemo
Executive Vice President
856 857 6302

leor.hemo@wolfcre.com

follow us:    

The foregoing information was furnished to us by sources which we deem to be reliable, but no warranty or representation is made as to the accuracy thereof. Subject to correction of errors, omissions, change of price, prior sale or withdrawal from market without notice.