

**PROFESSIONAL OFFICE SPACE AVAILABLE
 406 LIPPINCOTT DRIVE | MARLTON | NJ**


Contact Us

Jason M. Wolf
 Managing Principal
 D 856 857 6301
jason.wolf@wolfcre.com

Leor R. Hemo
 Executive Vice President
 D 856 857 6302
leor.hemo@wolfcre.com



Building Features

Location	Marlton Crossing Office Park 406 Lippincott Drive Marlton, NJ 08053
Size/SF Available	3,979 & 10,000 sf
Asking Lease Price	\$11.00-\$12.00/sf NNN
Parking	4.50/1,000 sf
Occupancy	Available for immediate occupancy
Signage	Monument office complex directory and tenant suite signage available

Property/Area Description

- ▶ Single-Story Class "A" Office
- ▶ Walking/Jogging Path Within Business Park
- ▶ Easy Access to Route 73
- ▶ Short Distance to both I-295 and the NJ Turnpike Entrances
- ▶ Close proximity to many shopping centers, including Marlton Crossing Shopping Center & The Promenade at Sagemore
- ▶ Many Restaurants nearby, including, PF Changs, Champs, Brios, and The Redstone American Grill

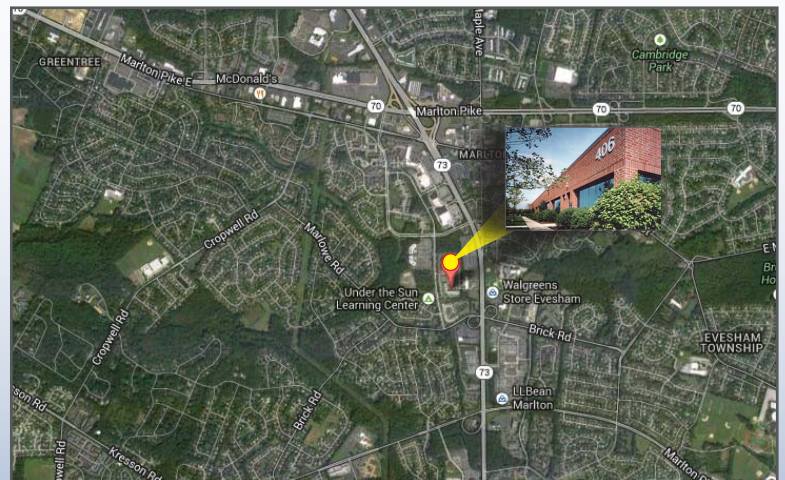
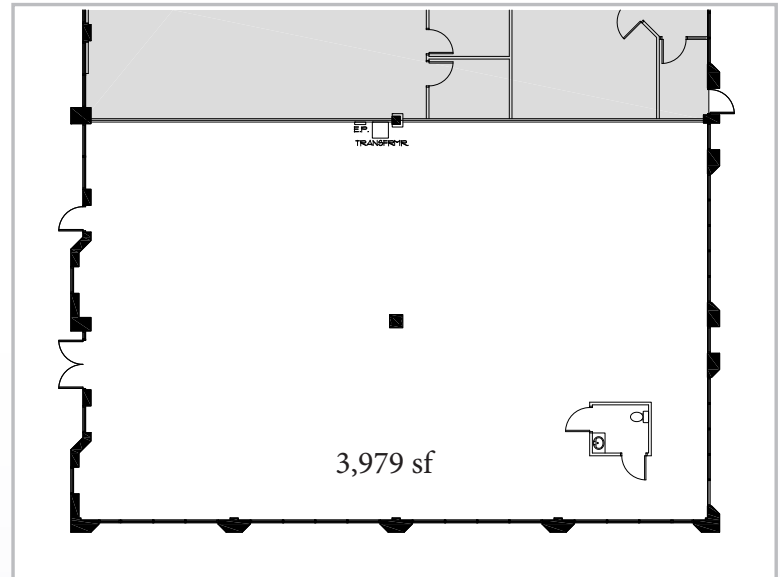
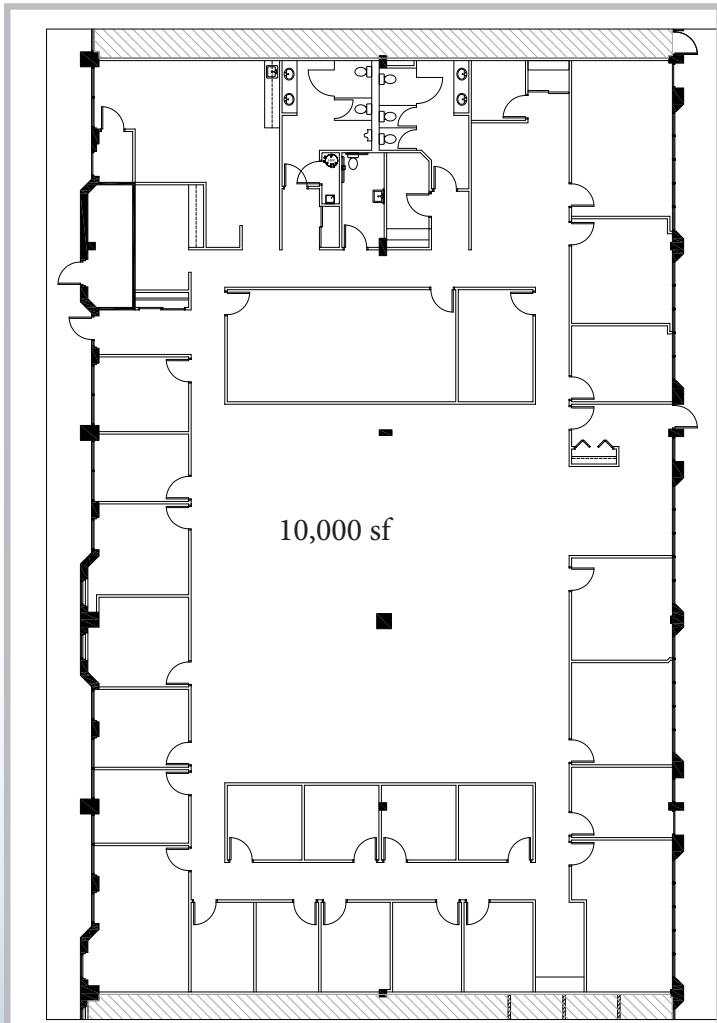
follow us:    

Wolf Commercial Real Estate
www.wolfcre.com

NJ OFFICE
 951 Route 73 North | Suite D
 Marlton, NJ 08053
 P 856 857-6300 | F 856 283-3950

PA OFFICE
 630 Freedom Business Center | 3rd Floor
 King of Prussia, PA 19406
 P 215 799 6900 | F 610 768 7701

Building Successful Relationships



DEMOGRAPHIC SUMMARY

	1 Mile	3 Miles	5 Miles
Population	8,662	67,719	161,396
Household	3,245	25,087	62,814
Median HH Income	\$88,571	\$96,185	\$89,921
Avg HH Income	\$106,317	\$113,022	\$107,253
Traffic Count	52,056 MPSI (Route 73 & Brick Road)		

CONTACT Us

Jason M. Wolf
 Managing Principal
 D 856 857 6301
jason.wolf@wolfcre.com

Leor R. Hemo
 Executive Vice President
 D 856 857 6302
leor.hemo@wolfcre.com

follow us:    



The foregoing information was furnished to us by sources which we deem to be reliable, but no warranty or representation is made as to the accuracy thereof. Subject to correction of errors, omissions, change of price, prior sale or withdrawal from market without notice.