



PROFESSIONAL OFFICE BUILDING AVAILABLE FOR SALE OR LEASE

PROFESSIONAL OFFICE SPACE AVAILABLE 3001 CHAPEL AVENUE WEST | CHERRY HILL | NJ



One Mile From the \$200M Kennedy Hospital Revitalization

Contact Us

Jason M. Wolf
Principal
D 856 857 6301
jason.wolf@wolfcre.com

John T. Mozzillo
Senior Associate/
Director of Investment Sales
D 856 857 6304
john.mozzillo@wolfcre.com

Christopher R. Henderson
Vice President
D 856 857 6337
chris.henderson@wolfcre.com

Building Features

Location	3001 Chapel Avenue West Cherry Hill, NJ
Size/SF Available	1st Floor: 4,980 sf
Asking Lease Price Asking Sale Price	\$16.00/sf Gross plus utilities and janitorial Call for information
Parking	4.50/1,000 sf
Occupancy	Available for immediate occupancy
Signage	Monument and building signage available
Area Description	Professional office building located in the heart of Cherry Hill. One mile from Kennedy Hospital which is undergoing a \$200M revitalization. This highly visible property provides easy access to Route 70, Route 73, Route 38, I-295, NJ Turnpike and Kings Highway.
Property Description	This 2 story, elevator served office building is a great fit for any professional or medical user seeking ample parking, excellent visibility, monument signage and close access to medical, restaurants, banks and retail.

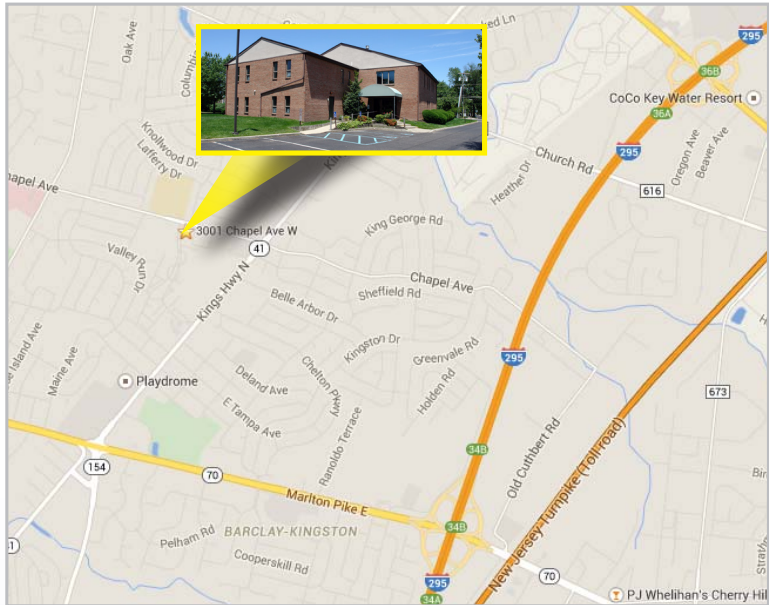
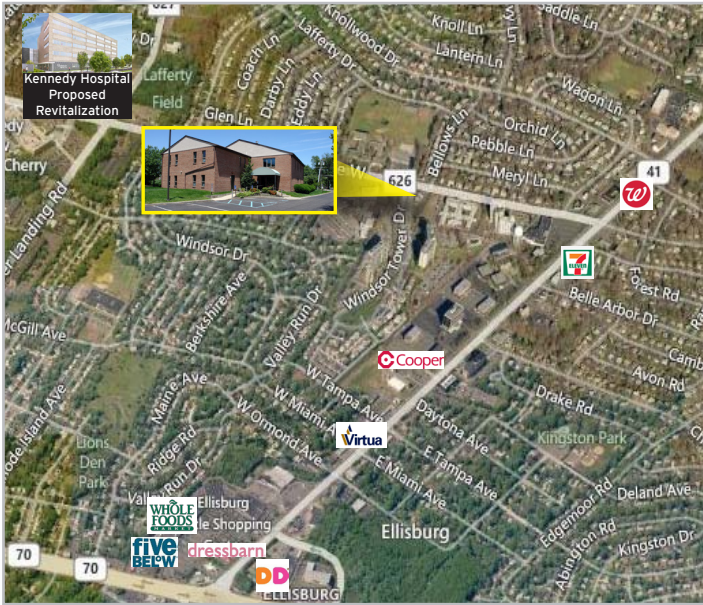
follow us:

Wolf Commercial Real Estate
www.wolfcre.com

NJ OFFICE
951 Route 73 North | Suite D
Marlton, NJ 08053
P 856 857-6300 | F 856 283-3950

PA OFFICE
630 Freedom Business Center | 3rd Floor
King of Prussia, PA 19406
P 215 799 6900 | F 610 768 7701

Building Successful Relationships



DEMOGRAPHIC SUMMARY

	1 Mile	3 Miles	5 Miles
Population	14,578	93,324	274,241
Household	5,700	37,697	105,623
Median HH Income	\$75,839	\$70,207	\$69,823
Avg HH Income	\$94,343	\$31,039	\$91,292
Traffic Count	26,072 ADV (North Kings Highway & Greenwards Lane)		

CONTACT Us

Jason M. Wolf
Principal
D 856 857 6301
jason.wolf@wolfcre.com

Christopher R. Henderson
Vice President
D 856 857 6337
chris.henderson@wolfcre.com

John T. Mozzillo
Senior Associate/Director of Investment Sales
D 856 857 6304
john.mozzillo@wolfcre.com

follow us:    



The foregoing information was furnished to us by sources which we deem to be reliable, but no warranty or representation is made as to the accuracy thereof. Subject to correction of errors, omissions, change of price, prior sale or withdrawal from market without notice.