



7,184 SF FOR LEASE

PREMIER MID-RISE OFFICE SPACE AVAILABLE  
3000 ATRIUM WAY | MOUNT LAUREL | NJ



Building Features

Location	Horizon Corporate Center 3000 Atrium Way Mount Laurel, NJ
Size/SF Available	1st Floor: 7,184 sf
Asking Lease Price	\$12.00-13.00/sf NNN
Parking	4.00/1,000 sf
Occupancy	Available for immediate occupancy
Signage	Lobby directory and suite signage available

Property/Area Description

- ▶ Beautifully landscaped corporate office park
- ▶ Locally owned and managed
- ▶ New exterior façade
- ▶ Easily accessible to Routes 73, 70, 38 I-295 & NJ Turnpike
- ▶ On-site luncheonette
- ▶ Surrounded by various hotels, restaurants and retailers

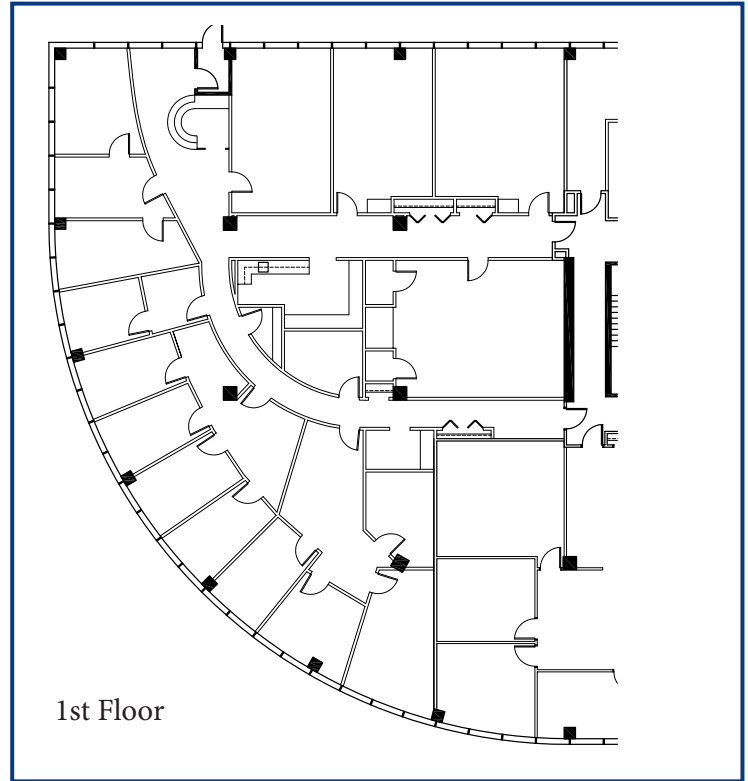
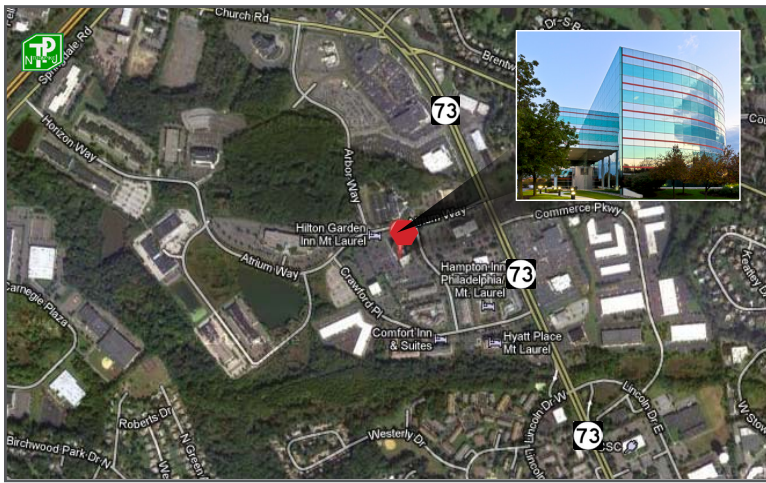
Contact Us

Jason M. Wolf  
Managing Principal  
D 856 857 6301  
[jason.wolf@wolfcre.com](mailto:jason.wolf@wolfcre.com)

Leor R. Hemo  
Executive Vice President  
D 856 857 6302  
[leor.hemo@wolfcre.com](mailto:leor.hemo@wolfcre.com)



# Building Successful Relationships



## DEMOGRAPHIC SUMMARY

	1 Mile	3 Miles	5 Miles
Population	5,366	75,650	191,079
Household	2,159	30,458	75,096
Median HH Income	\$86,602	\$79,504	\$81,315
Avg HH Income	\$104,235	\$99,548	\$103,421
Traffic Count	52,370 (Route 73 & Atruim Way)		

## CONTACT Us

Jason M. Wolf  
 Managing Principal  
 D 856 857 6301  
[jason.wolf@wolfcre.com](mailto:jason.wolf@wolfcre.com)

Leor R. Hemo  
 Executive Vice President  
 D 856 857 6302  
[leor.hemo@wolfcre.com](mailto:leor.hemo@wolfcre.com)

follow us:    



The foregoing information was furnished to us by sources which we deem to be reliable, but no warranty or representation is made as to the accuracy thereof. Subject to correction of errors, omissions, change of price, prior sale or withdrawal from market without notice.