



+/- 1,617 SF FOR LEASE

PROFESSIONAL MEDICAL/OFFICE SPACE FOR LEASE 2401 EVESHAM ROAD | VOORHEES | NJ



Contact Us

Jason M. Wolf
Managing Principal
D 856 857 6301
jason.wolf@wolfcre.com

Building Features	
Location	2401 Evesham Road Voorhees, NJ
Size/SF Available	1,617 sf
Asking Lease Price	\$18.00 sf/NNN
Occupancy	Available for immediate occupancy
Signage	Suite and monument directory signage available
Parking	5.75/1000 sf
Area Description	Located on Evesham Road at the intersection of Evesham & Cooper Road. This building is in close proximity to Routes 73 & 70, as well as I-295. Located next to the Delaware Valley Urology Voorhees campus and across from Health & Wellness Campus of Virtua Health System.
Property description	<ul style="list-style-type: none"> ▶ Join Delaware Valley Urology, Garden State Ob/GYN Associates, Women's Imaging of South Jersey and LabCorp ▶ This property is a well-maintained professional medical office building located on Evesham Road. ▶ The building was awarded LEED certification at the Gold level in 2012.

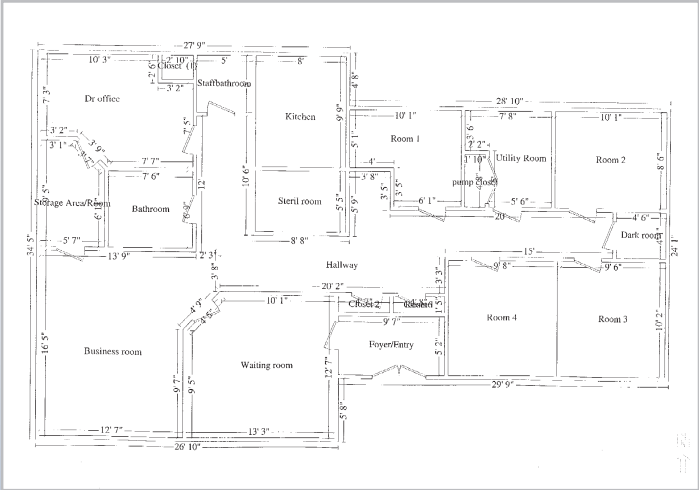
follow us:

Wolf Commercial Real Estate
www.wolfcre.com

NJ OFFICE
951 Route 73 North | Suite D
Marlton, NJ 08053
P 856 857-6300 | F 856 283-3950

PA OFFICE
630 Freedom Business Center | 3rd Floor
King of Prussia, PA 19406
P 215 799 6900 | F 610 768 7701

Building Successful Relationships



DEMOGRAPHIC SUMMARY

	1 Mile	3 Miles	5 Miles
Population	9,425	70,473	195,794
Household	3,427	27,096	75,603
Median HH Income	\$113,602	\$95,032	\$78,421
Avg HH Income	\$138,146	\$114,155	\$96,876
Traffic Count	22,620 (E Evesham Rd & The Woods II)		

CONTACT Us

Jason M. Wolf, Managing Principal
 D 856 857 6301
jason.wolf@wolfcre.com

follow us:    



The foregoing information was furnished to us by sources which we deem to be reliable, but no warranty or representation is made as to the accuracy thereof. Subject to correction of errors, omissions, change of price, prior sale or withdrawal from market without notice.