

PREMIER CLASS "A" SUBLEASE OPPORTUNITY

226 W LANDIS AVENUE | VINELAND | NJ



Contact Us

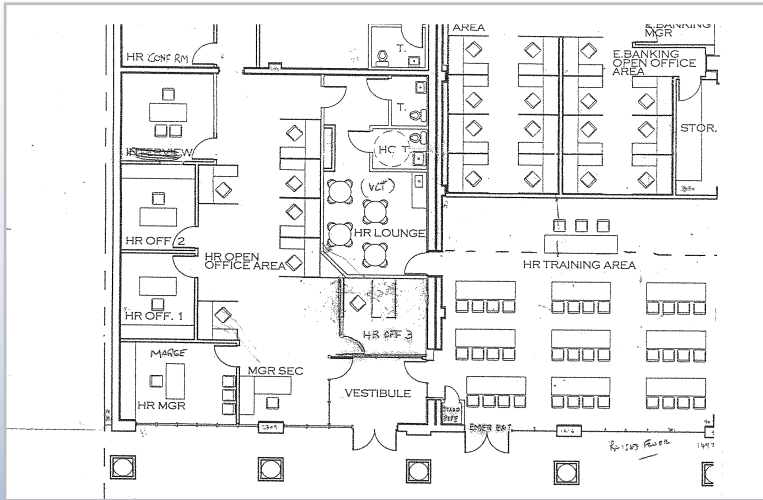
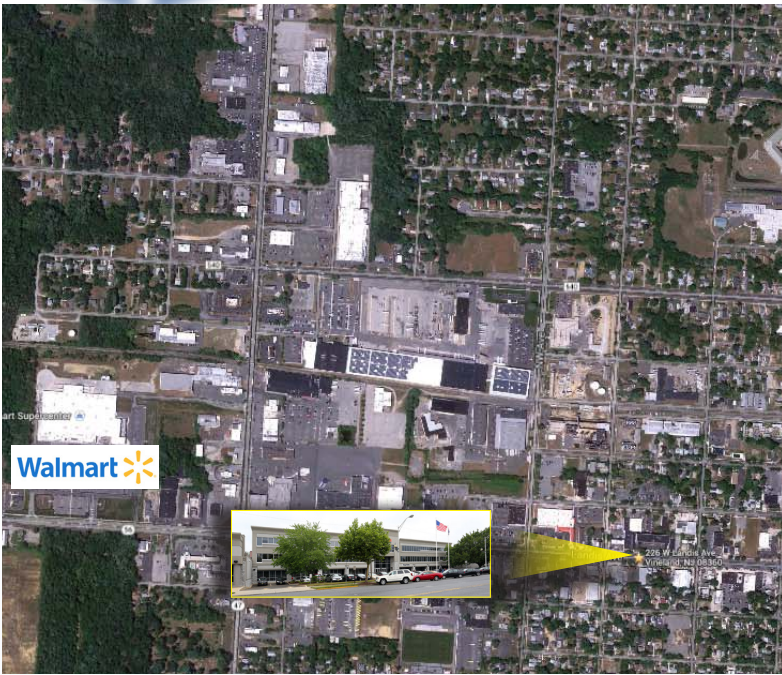
Jason M. Wolf
 Managing Principal
 D 856 857 6301
jason.wolf@wolfcre.com

Building Features

| | |
|----------------------|--|
| Location | 226 W Landis Avenue Vineland, NJ |
| Size/SF Available | +/- 11,426 sf (1st Floor) |
| Sublease Price | \$18.00/sf Full service Lease term expires October 31, 2017 |
| Parking | On-site and off street parking available |
| Occupancy | Available for immediate occupancy |
| Signage | Lobby signage available |
| Area Description | Within walking distance to retail, restaurants and other professional services. Located on the NJ Transit 408 bus route. |
| Property Description | Class "A" mid-rise building located in the heart of the Vineland Business District. |

follow us:    

Building Successful Relationships







DEMOGRAPHIC SUMMARY

| | 1 Mile | 3 Miles | 5 Miles |
|------------------|---------------------------------------|----------|----------|
| Population | 13,524 | 45,561 | 67,526 |
| Household | 4,225 | 15,762 | 23,995 |
| Median HH Income | \$36,578 | \$46,557 | \$50,845 |
| Avg HH Income | \$48,991 | \$61,850 | \$68,187 |
| Traffic Count | 13,371 (W Landis Ave & N West Avenue) | | |

CONTACT Us

Jason M. Wolf, Managing Principal
 D 856 857 6301
jason.wolf@wolfcre.com

follow us:    



The foregoing information was furnished to us by sources which we deem to be reliable, but no warranty or representation is made as to the accuracy thereof. Subject to correction of errors, omissions, change of price, prior sale or withdrawal from market without notice.