



RETAIL/OFFICE SPACE FOR LEASE

RETAIL/OFFICE SPACE AVAILABLE 209-215 BELLEVUE AVENUE | HAMMONTON | NJ



Contact Us

Leor R. Hemo
Executive Vice President
D 856 857 6302
leor.hemo@wolfcre.com

Jason M. Wolf
Managing Principal
D 856 857 6301
jason.wolf@wolfcre.com

Building Features

Location	209-215 Bellevue Avenue Atlantic County, Hammonton, NJ
Size/SF Available	1st Floor: 10,176 sf (Divisible) 2nd Floor: 9,135 sf (Divisible) Basement: (Storage use only)
Asking Lease Price	\$11.00 - \$12.00/sf NNN
Parking	5/1,000 sf
Occupancy	Available for immediate occupancy
Signage	Building and canopy signage available
Property Description	2 story mixed use retail and office building with first floor retail and 2nd floor office space available for immediate occupancy. The entire building can offer up to +/-20,000 sf for lease (divisible). Significant interior and exterior renovations are planned.
Area Description	Located in the downtown Hammonton business district in a historic village community. The property is conveniently located off The Atlantic City Expressway (Exit 28) and within close proximity to Routes 30 and 206. This location is directly between Philadelphia and Atlantic City.

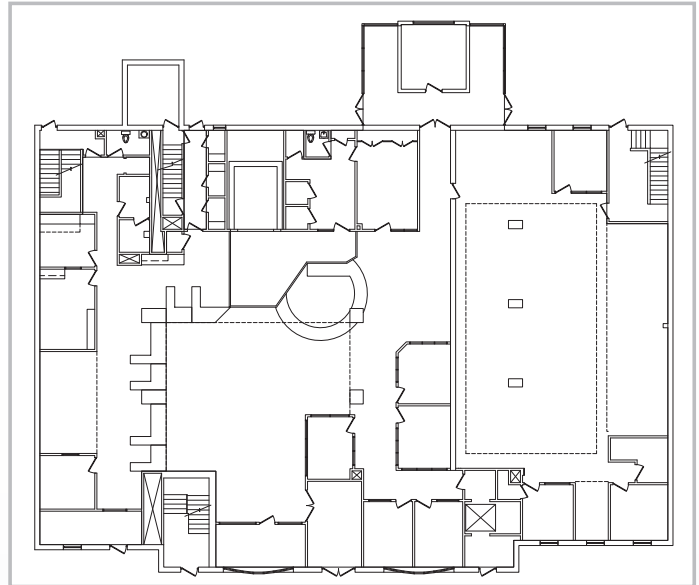
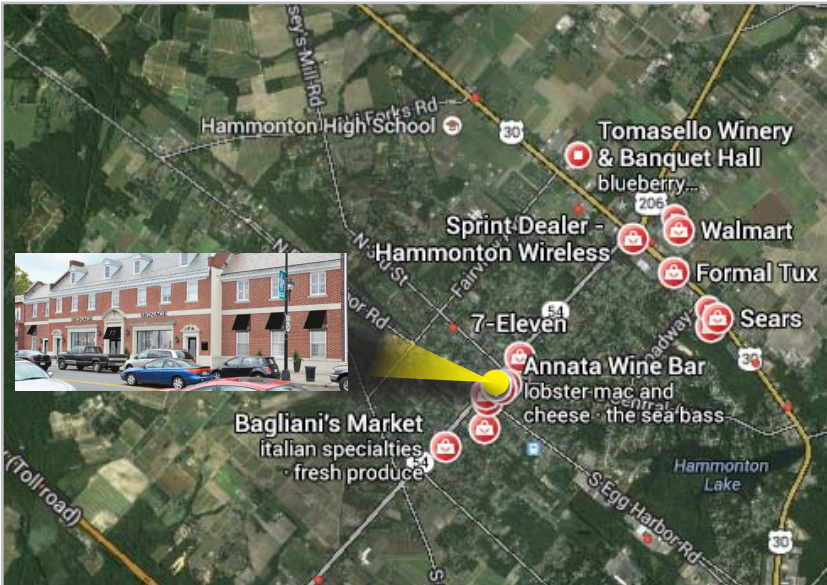
follow us:

Wolf Commercial Real Estate
www.wolfcre.com

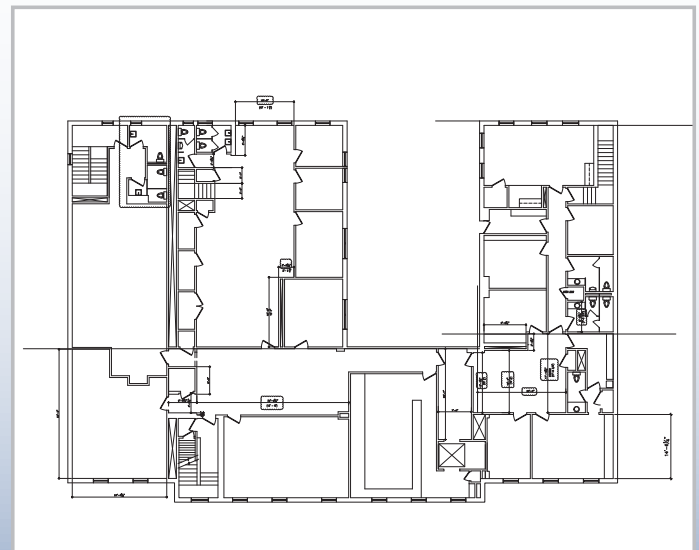
NJ OFFICE
951 Route 73 North | Suite D
Marlton, NJ 08053
P 856 857-6300 | F 856 283-3950

PA OFFICE
630 Freedom Business Center | 3rd Floor
King of Prussia, PA 19406
P 215 799 6900 | F 610 768 7701

Building Successful Relationships



1st Floor: 10,176 sf (Divisible)



2nd Floor: 9,135 sf (Divisible)

DEMOGRAPHIC SUMMARY

	1 Mile	3 Miles	5 Miles
Population	8,173	15,559	21,144
Household	3,023	5,713	7,779
Median HH Income	\$49,999	\$55,469	\$58,677
Avg HH Income	\$70,544	\$73,790	\$75,308

CONTACT Us

Leor R. Hemo
Executive Vice President
D 856 857 6302
leor.hemo@wolfcre.com

Jason M. Wolf
Managing Principal
D 856 857 6301
jason.wolf@wolfcre.com

follow us:    



The foregoing information was furnished to us by sources which we deem to be reliable, but no warranty or representation is made as to the accuracy thereof. Subject to correction of errors, omissions, change of price, prior sale or withdrawal from market without notice.