



3,529 SF & 4,300 SF FOR LEASE

**GREENTREE EXECUTIVE CAMPUS**  
**2003 LINCOLN DRIVE WEST | MARLTON | NJ**



Building Features	
Location	Greentree Executive Campus 2003 Lincoln Drive West Marlton, NJ
Size/SF Available	Suite A: 3,529 sf Suite B: 4,300 sf
Asking Lease Price	\$14.00/sf Gross + Utilities
Parking	Abundant parking
Occupancy	Available for immediate occupancy
Signage	Suite signage available
Property/Area Description	<ul style="list-style-type: none"> <li>▶ Single story office complex</li> <li>▶ Exceptional location for a medical or professional office in the heart of Marlton</li> <li>▶ Under new management</li> <li>▶ Conveniently located near the intersection of Route 73 &amp; Greentree Road with easy access to I-295 and the NJ Turnpike</li> <li>▶ Nearby amenities include banks, restaurants, and shopping</li> </ul>

**Contact Us**

Leor R. Hemo  
 Executive Vice President  
 D 856 857 6302  
[leor.hemo@wolfcre.com](mailto:leor.hemo@wolfcre.com)

Jason M. Wolf  
 Principal  
 D 856 857 6301  
[jason.wolf@wolfcre.com](mailto:jason.wolf@wolfcre.com)

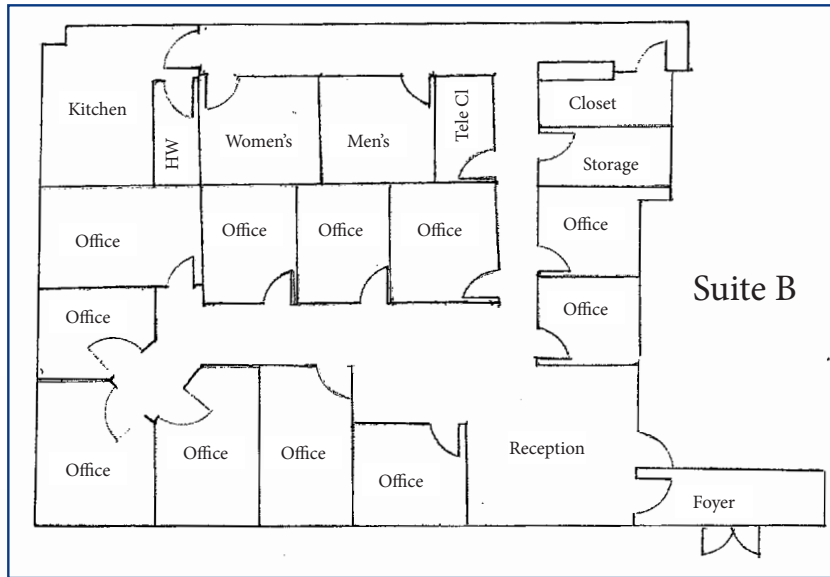
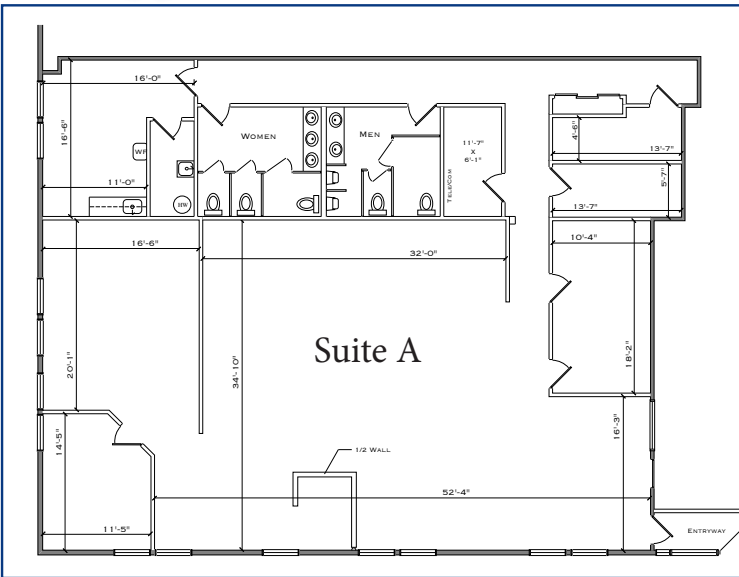
follow us:

**Wolf Commercial Real Estate**  
**www.wolfcre.com**

NJ OFFICE  
 951 Route 73 North | Suite D  
 Marlton, NJ 08053  
 P 856 857-6300 | F 856 283-3950

PA OFFICE  
 630 Freedom Business Center | 3rd Floor  
 King of Prussia, PA 19406  
 P 215 799 6900 | F 610 768 7701

# Building Successful Relationships



## DEMOGRAPHIC SUMMARY

	1 Mile	3 Miles	5 Miles
Population	8,311	75,383	188,265
Household	3,277	29,290	73,764
Median HH Income	\$84,032	\$88,332	\$84,242
Avg HH Income	\$103,183	\$107,055	\$105,001
Traffic Count	46,188 AADT (Route 73 & Lincoln West)		

## CONTACT Us

Leor R. Hemo  
Executive Vice President  
D 856 857 6302  
[leor.hemo@wolfcre.com](mailto:leor.hemo@wolfcre.com)

Jason M. Wolf  
Principal  
D 856 857 6301  
[jason.wolf@wolfcre.com](mailto:jason.wolf@wolfcre.com)

follow us:    



The foregoing information was furnished to us by sources which we deem to be reliable, but no warranty or representation is made as to the accuracy thereof. Subject to correction of errors, omissions, change of price, prior sale or withdrawal from market without notice.