



3,000 - 9,390 SF FOR LEASE

PREMIER OFFICE/WAREHOUSE SPACE AVAILABLE 2000 CRAWFORD PLACE | MOUNT LAUREL | NJ



Contact Us

Jason M. Wolf
Principal
D 856 857 6301
jason.wolf@wolfcre.com

Leor R. Hemo
Executive Vice President
D 856 857 6302
leor.hemo@wolfcre.com



Building Features

Location	Horizon Corporate Center 2000 Crawford Place Mount Laurel, NJ	
Size/SF Available	Warehouse Suite 400: 3,000 sf Suite 500: 6,390 sf } Contiguous	Office Suite 900: 5,293 sf
Asking Lease Price	Flex: \$5.00/sf NNN Office: \$10.00/sf NNN	
Parking	4/1,000 sf	
Occupancy	Available for immediate occupancy	
Signage	Suite and monument signage available	

Property/Area Description

- ▶ Beautifully landscaped corporate office park.
- ▶ Locally owned and managed
- ▶ New exterior façade
- ▶ Easily accessible to Routes 73, 70, 38, I-295 & NJ Turnpike
- ▶ Surrounded by abundance of hotels, restaurants, retailers and banking locations.

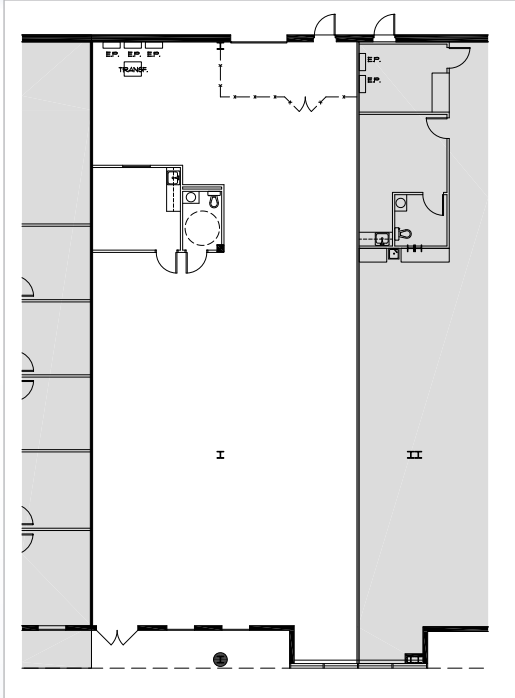
follow us:

Wolf Commercial Real Estate
www.wolfcre.com

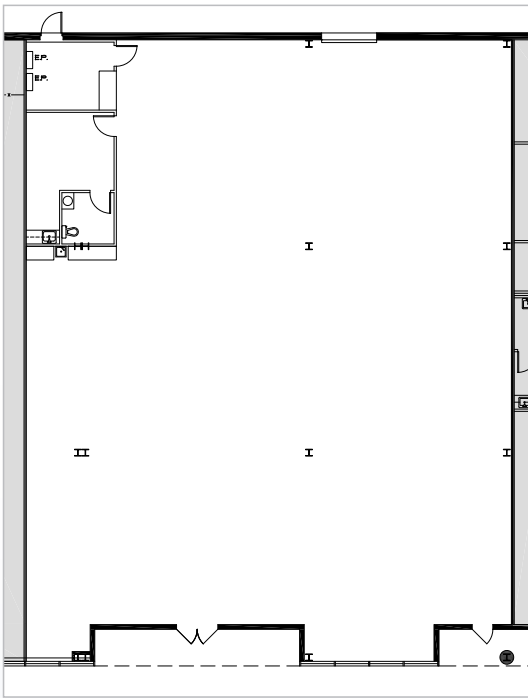
NJ OFFICE
951 Route 73 North | Suite D
Marlton, NJ 08053
P 856 857-6300 | F 856 283-3950

PA OFFICE
630 Freedom Business Center | 3rd Floor
King of Prussia, PA 19406
P 215 799 6900 | F 610 768 7701

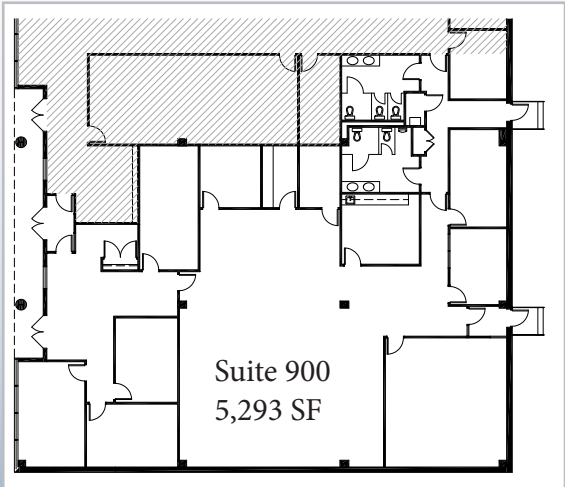
Building Successful Relationships



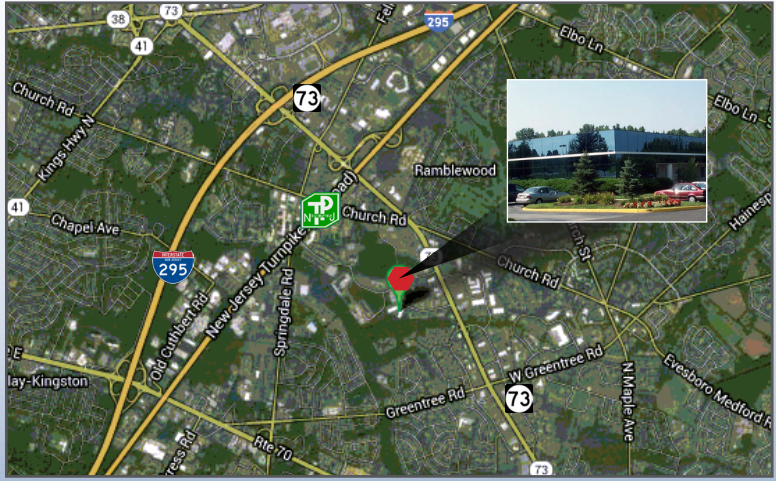
Suite 400
3,000 SF



Suite 500
6,390 SF



Suite 900
5,293 SF



DEMOGRAPHIC SUMMARY

	1 Mile	3 Miles	5 Miles
Population	5,828	77,229	191,748
Household	2,308	30,878	75,123
Median HH Income	\$86,424	\$80,038	\$81,518
Avg HH Income	\$104,586	\$100,256	\$103,736
Traffic Count	51,586 (Route 73 & Pacilli Place)		

CONTACT Us

Jason M. Wolf
Principal
D 856 857 6301
jason.wolf@wolfcre.com

Leor R. Hemo
Executive Vice President
D 856 857 6302
leor.hemo@wolfcre.com

follow us:    



The foregoing information was furnished to us by sources which we deem to be reliable, but no warranty or representation is made as to the accuracy thereof. Subject to correction of errors, omissions, change of price, prior sale or withdrawal from market without notice.