

**OFFICE BUILDING FOR SALE**  
**1869 GREENTREE ROAD | CHERRY HILL | NJ**


## Contact Us

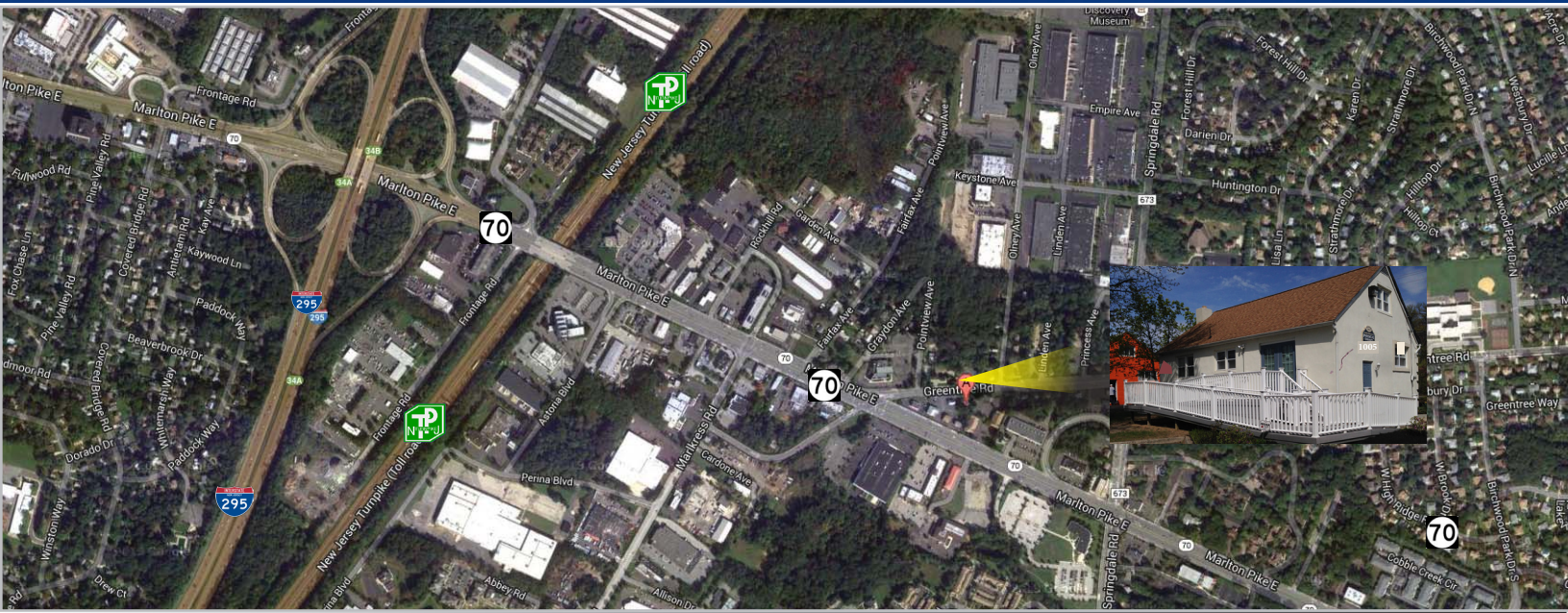
Leor R. Hemo  
 Executive Vice President  
 D 856 857 6302  
[leor.hemo@wolfcre.com](mailto:leor.hemo@wolfcre.com)

Christopher R. Henderson  
 Associate  
 D 856 857 6337  
[chris.henderson@wolfcre.com](mailto:chris.henderson@wolfcre.com)

### Building Features

Location	1869 Greentree Road Cherry Hill, NJ
Size/SF Available	+/-1,415
Asking Sale Price	\$245,000
Parking	4/1,000 sf
Occupancy	Available for occupancy
Signage	Signage available
Property Description	Perfect location for any Professional use including physical therapy (with minor modifications), accountants, law offices, counselling services, etc. Stucco front with great interior space. Property has 1,010 sf on the first floor with a second floor that could house upstairs offices. Large basement. New carpet and paint.
Area Description	Easy access to 295, Route 73 and Springdale Road with direct access to route 70. Conveniently located to local retail, restaurants and other amenities. Easy access to the New Lourdes medical offices, Virtua Hospital and many medical facilities.

follow us:   



## DEMOGRAPHIC SUMMARY

	1 Mile	3 Miles	5 Miles
Population	7,416	79,846	225,031
Household	3,016	31,110	88,930
Median HH Income	\$95,458	\$86,807	\$79,182
Avg HH Income	\$117,401	\$108,719	\$101,672

## CONTACT Us

Leor R. Hemo  
 Executive Vice President  
 D 856 857 6302  
[leor.hemo@wolfcre.com](mailto:leor.hemo@wolfcre.com)

Christopher R. Henderson  
 Associate  
 D 856 857 6337  
[chris.henderson@wolfcre.com](mailto:chris.henderson@wolfcre.com)

follow us:   



The foregoing information was furnished to us by sources which we deem to be reliable, but no warranty or representation is made as to the accuracy thereof. Subject to correction of errors, omissions, change of price, prior sale or withdrawal from market without notice.