

PROMINENT CHERRY HILL LANDMARK FOR SALE 1721 SPRINGDALE ROAD ■ CHERRY HILL ■ NJ



Contact Us

Leor R. Hemo
 Executive Vice President
 D 856 857 6302
leor.hemo@wolfcre.com

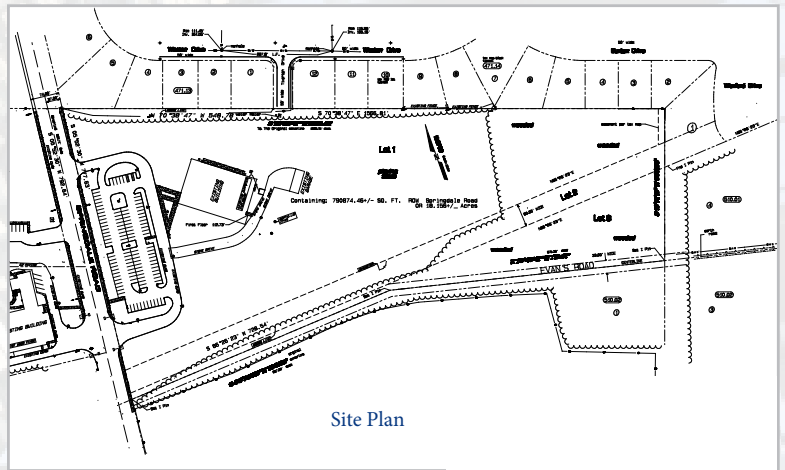
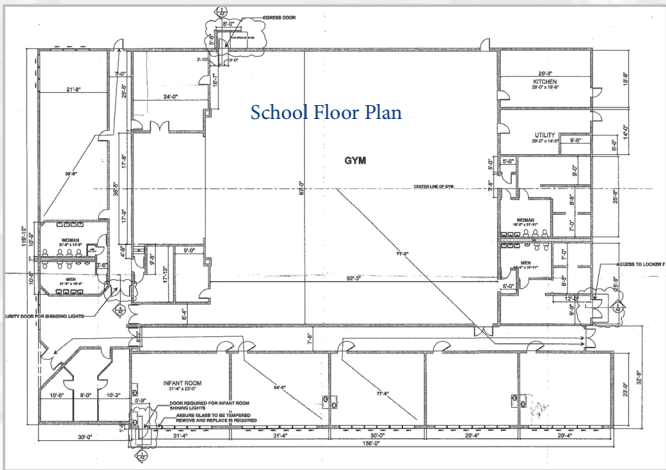
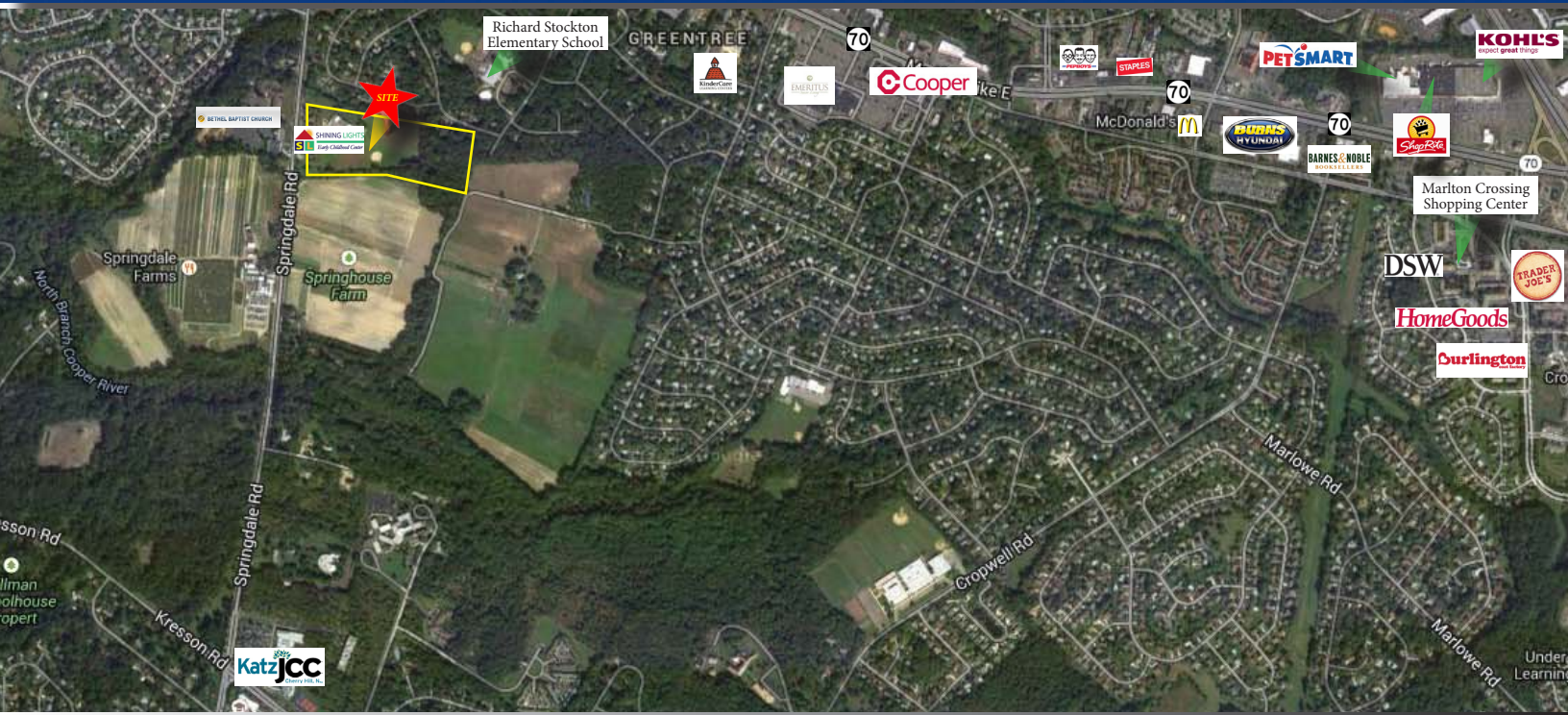
Scott D. Seligman
 Director Business Development
 D 856 857 6305
scott.seligman@wolfcre.com



Building Features

Location	1721 Springdale Road Cherry Hill Block: 510.1 Lots:1,2,3
Size/SF Available	+/- 21,325 sf (School)
Acreage	+/- 18 acres
Asking Sale Price	\$4,250,000
Occupancy	End of school year 2014
Signage	Monument and building signage
Area Description	This magnificent property is located on Springdale Road on the east side of Cherry Hill with great access to Route 70, I-295, NJ Turnpike and minutes from shopping, restaurants and many amenities.
Property Description	Highly visible newly renovated school with a gym, full kitchen and abundant parking situated on +/- 18 acres of developable land in prominent Cherry Hill. The property is a prime development site.

follow us:   



DEMOGRAPHIC SUMMARY

	1 Mile	3 Miles	5 Miles
Population	11,474	100,956	308,876
Household	4,580	36,622	120,813
Median HH Income	\$90,021	\$77,353	\$62,302
Avg HH Income	\$106,667	\$95,931	\$82,010

CONTACT Us

Leor R. Hemo, Executive Vice President
 D 856 857 6302
leor.hemo@wolfcre.com

Scott D. Seligman, Director of Business Development
 856 857 6305
scott.seligman@wolfcre.com

follow us:



The foregoing information was furnished to us by sources which we deem to be reliable, but no warranty or representation is made as to the accuracy thereof. Subject to correction of errors, omissions, change of price, prior sale or withdrawal from market without notice.