

OFFICE SPACE ■ 1309 ROUTE 70 WEST ■ CHERRY HILL ■ NJ


Contact Us

Scott D. Seligman
 Director Business Development

D 856 857 6305
scott.seligman@wolfcre.com

Christopher R. Henderson
 Associate

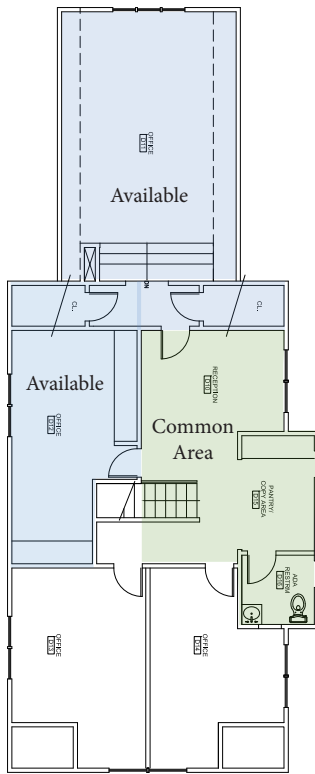
D 856 857 6337
chris.henderson@wolfcre.com

Building Features

| | |
|---------------------------------|--|
| Location | 1309 Route 70 West Cherry Hill, NJ |
| Size/SF Available | 3,700 sf free-standing building with up to 1,000 sf for lease |
| Sale Price Asking Lease Rate | Call for more information. Ideal for owner occupant. \$1,150/Month/Full Service |
| Parking | 17 parking spaces in rear of building |
| Occupancy | Available for immediate occupancy |
| Signage | Available at entrance |
| Area description | Property is well-located and highly visible on Route 70 West. Within close proximity to Garden State Shopping Center, banks, restaurants and Philadelphia via Ben Franklin Bridge. |
| Traffic Count | 54,387 (Route 70) |
| Population 3 Mile Radius | 112,541 |

follow us:   

Building Successful Relationships



2nd Floor

Contact Us

Scott D. Seligman
Director Business Development
D 856 857 6305
scott.seligman@wolfcre.com

Christopher R. Henderson
Associate
D 856 857 6337
chris.henderson@wolfcre.com

Wolf Commercial Real Estate, LLC
951 Route 73 North
Suite D
Marlton, NJ 08053
P 856 857 6300 | F 856 283 3950
www.wolfcre.com

follow us:   

