



1,040 SF - 2,669 SF FOR LEASE

## OFFICE SPACE FOR LEASE

1173 EAST LANDIS AVENUE | VINELAND | NJ



### Contact Us

Leor R. Hemo  
Executive Vice President  
D 856 857 6302  
[leor.hemo@wolfcre.com](mailto:leor.hemo@wolfcre.com)

Jason M. Wolf  
Managing Principal  
D 856 857 6301  
[jason.wolf@wolfcre.com](mailto:jason.wolf@wolfcre.com)

#### Building Features

Location	1173 East Landis Avenue Vineland, NJ
Size/SF Available	1,040 sf & 1070 sf (Building B) 2,669 sf & +/- 700 sf (raw space) (Building C)
Asking Lease Rate	\$ 16.00/sf, full service
Parking	Abundant on-site parking available
Occupancy	Available for immediate occupancy
Signage	Monument signage available on Landis Avenue
Area description	Property is located at intersection of Landis & Main Avenue within the heart of the Vineland business district. The subject is well-located and within walking distance to retail, restaurants and other professional users.
Traffic Count Landis Avenue	11,484 AVD

follow us:    

Wolf Commercial Real Estate  
[www.wolfcre.com](http://www.wolfcre.com)

NJ OFFICE  
951 Route 73 North | Suite D  
Marlton, NJ 08053  
P 856 857-6300 | F 856 283-3950

PA OFFICE  
630 Freedom Business Center | 3rd Floor  
King of Prussia, PA 19406  
P 215 799 6900 | F 610 768 7701

# Building Successful Relationships



## Contact Us

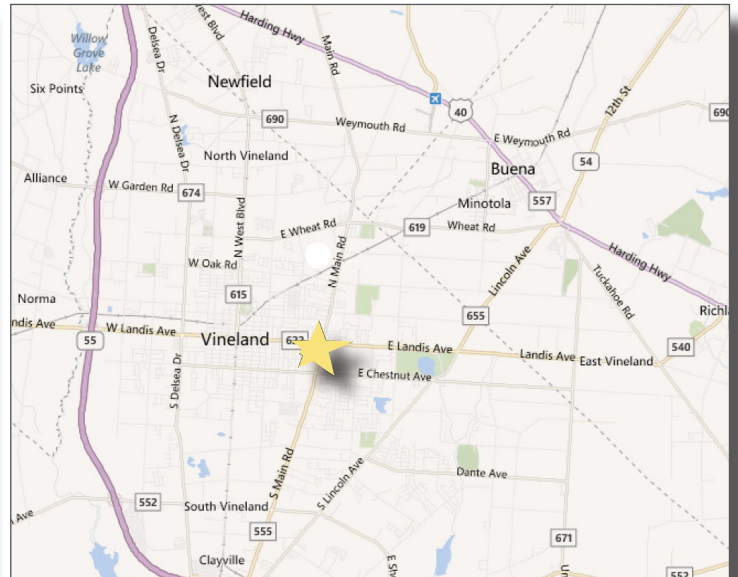
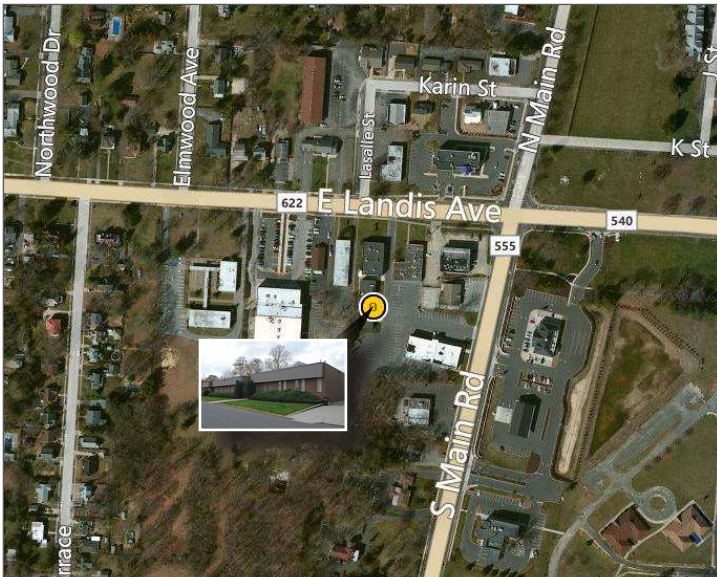
Leor R. Hemo  
Executive Vice President

D 856 857 6302  
[leor.hemo@wolfcre.com](mailto:leor.hemo@wolfcre.com)

Jason M. Wolf  
Managing Principal

D 856 857 6301  
[jason.wolf@wolfcre.com](mailto:jason.wolf@wolfcre.com)

Wolf Commercial Real Estate, LLC  
951 Route 73 North  
Suite D  
Marlton, NJ 08053  
P 856 857 6300 | F 856 283 3950  
[www.wolfcre.com](http://www.wolfcre.com)



follow us: [f](#) [t](#) [in](#) [ig](#)